

For Research Use Only

ALK/CD246 Monoclonal antibody



Catalog Number: 60321-1-Ig **1 Publications**

Basic Information

Catalog Number: 60321-1-Ig	GenBank Accession Number: NM_004304	Purification Method: Protein A purification
Size: 150ul , Concentration: 1600 µg/ml by Bradford method using BSA as the standard;	GeneID (NCBI): 238	CloneNo.: 7G9E3
Source: Mouse	Full Name: anaplastic lymphoma receptor tyrosine kinase	Recommended Dilutions: WB 1:500-1:2000 IHC 1:20-1:200
Isotype: IgG2a	Calculated MW: 1620 aa, 176 kDa	
Immunogen Catalog Number: AG21493		

Applications

Tested Applications: IHC, WB, ELISA	Positive Controls: WB : Recombinant protein, IHC : human lymphoma tissue,
Cited Applications: WB	
Species Specificity: human	
Cited Species: human	
Note-IHC: suggested antigen retrieval with TE buffer pH 9.0; (*) Alternatively, antigen retrieval may be performed with citrate buffer pH 6.0	

Background Information

ALK, also named as CD246, is a receptor tyrosine kinase (RTK) that belongs to the protein kinase superfamily. ALK is usually found in the nervous system and appears to play an important role in the normal development and function of the nervous system. ALK was originally identified as part of the NPM (Nucleophosmin)-ALK oncogenic fusion protein, resulting from the (2;5)(p23;q35) translocation that is frequently associated with anaplastic large-cell lymphoma (ALCL). The EML4 (echinoderm microtubule-associated protein-like 4)-ALK fusion protein have been described in non-small-cell lung cancer (NSCLC), this transforming fusion kinase is a promising candidate for a therapeutic target as well as for a diagnostic molecular marker in NSCLC (PMID: 17625570).

Notable Publications

Author	Pubmed ID	Journal	Application
Tao Pan	34237620	Eur J Med Chem	WB

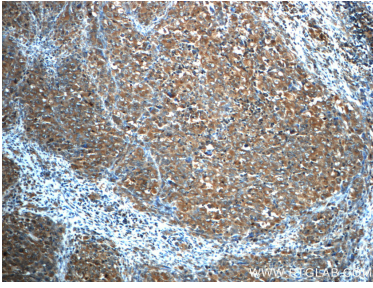
Storage

Storage:
Store at -20°C. Stable for one year after shipment.
Storage Buffer:
PBS with 0.02% sodium azide and 50% glycerol pH 7.3.
Aliquoting is unnecessary for -20°C storage

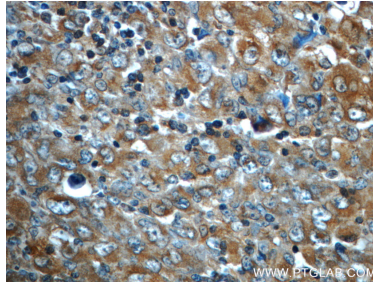
For technical support and original validation data for this product please contact:
T: 1 (888) 4PTGLAB (1-888-478-4522) (toll free in USA), or 1(312) 455-8498 (outside USA)
E: proteintech@ptglab.com
W: ptglab.com

This product is exclusively available under Proteintech Group brand and is not available to purchase from any other manufacturer.

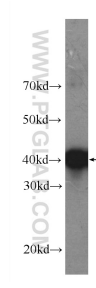
Selected Validation Data



Immunohistochemical analysis of paraffin-embedded human lymphoma tissue slide using 60321-1-Ig (ALK/CD246 antibody) at dilution of 1:50 (under 10x lens).



Immunohistochemical analysis of paraffin-embedded human lymphoma tissue slide using 60321-1-Ig (ALK/CD246 antibody) at dilution of 1:50 (under 40x lens).



Recombinant protein were subjected to SDS PAGE followed by western blot with 60321-1-Ig (ALK,CD246 Antibody) at dilution of 1:1000 incubated at room temperature for 1.5 hours.