

For Research Use Only

KLK3/PSA Monoclonal ANTIBODY



Catalog Number: 60338-1-Ig

Basic Information

Catalog Number:
60338-1-Ig

Size:
129 µg/150 µl

Source:
Mouse

Isotype:
IgG1

Purification Method:
Protein G purification

Immunogen Catalog Number:
AG1060

GenBank Accession Number:
BC005307

GeneID (NCBI):
354

Full Name:
kallikrein-related peptidase 3

Calculated MW:
29 kDa

Observed MW:
30-34 kDa

Recommended Dilutions:

WB 1:1000-1:4000
IHC 1:2500-1:10000

Applications

Tested Applications:

IHC, WB, ELISA

Species Specificity:

human

Note: suggested antigen retrieval with TE buffer pH 9.0; (*) Alternatively, antigen retrieval may be performed with citrate buffer pH 6.0

Positive Controls:

WB : LNCaP cells;

IHC : human prostate cancer tissue;

Background Information

Kallikreins are a subgroup of serine proteases having diverse physiological functions. Growing evidence suggests that many kallikreins are implicated in carcinogenesis and some have potential as novel cancer and other disease biomarkers. kallikrein-related peptidase 3, which is also called PSA (prostate-specific antigen) in the clinical setting, is useful in the diagnosis and monitoring of prostatic carcinoma. KLK3 has 5 isoforms produced by alternative splicing.

Notable Publications

Author	Pubmed ID	Journal	Application
--------	-----------	---------	-------------

Storage

Storage:

Store at -20°C. Stable for one year after shipment.

Storage Buffer:

PBS with 0.02% sodium azide and 50% glycerol pH 7.3.

Aliquoting is unnecessary for -20°C storage

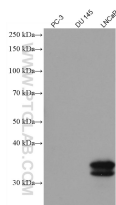
For technical support and original validation data for this product please contact:

T: 1 (888) 4PTGLAB (1-888-478-4522) (toll free in USA), or 1(312) 455-8498 (outside USA)

E: proteintech@ptglab.com
W: ptglab.com

This product is exclusively available under Proteintech Group brand and is not available to purchase from any other manufacturer.

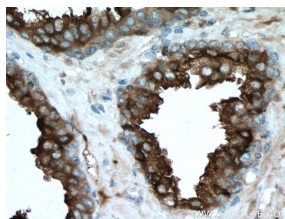
Selected Validation Data



PC-3(PSA-), DU 145(PSA-) and LNCaP(PSA+) cell lysates were subjected to SDS PAGE followed by western blot with 60338-1-Ig (KLK3/PSA antibody) at dilution of 1:1000 incubated at room temperature for 1.5 hours



Immunohistochemical analysis of paraffin-embedded human prostate cancer tissue slide using 60338-1-Ig (KLK3/PSA antibody) at dilution of 1:5000 (under 10x lens). heat mediated antigen retrieved with Tris-EDTA buffer(pH9).



Immunohistochemical analysis of paraffin-embedded human prostate cancer tissue slide using 60338-1-Ig (KLK3/PSA antibody) at dilution of 1:5000 (under 40x lens). heat mediated antigen retrieved with Tris-EDTA buffer(pH9).