

For Research Use Only

# LIN28A Monoclonal antibody

Catalog Number: 60344-1-Ig **2 Publications**



## Basic Information

<b>Catalog Number:</b> 60344-1-Ig	<b>GenBank Accession Number:</b> BC028566	<b>Purification Method:</b> Protein G purification
<b>Size:</b> 150ul , Concentration: 2300 ug/ml by Nanodrop and 1560 ug/ml by Bradford method using BSA as the standard;	<b>GeneID (NCBI):</b> 79727	<b>CloneNo.:</b> 4F5G6
<b>Source:</b> Mouse	<b>UNIPROT ID:</b> Q9H9Z2	<b>Recommended Dilutions:</b> WB 1:500-1:2000 IHC 1:50-1:500 IF-P 1:200-1:800
<b>Isotype:</b> IgG1	<b>Full Name:</b> lin-28 homolog (C. elegans)	
<b>Immunogen Catalog Number:</b> AG2312	<b>Calculated MW:</b> 209 aa, 23 kDa	
	<b>Observed MW:</b> 28 kDa	

## Applications

<b>Tested Applications:</b> WB, IHC, IF-P, ELISA	<b>Positive Controls:</b> WB : NCCIT cell, IHC : human prostate cancer tissue, IF-P : human prostate cancer tissue,
<b>Cited Applications:</b> WB	
<b>Species Specificity:</b> human	
<b>Cited Species:</b> human, mouse	
<b>Note-IHC: suggested antigen retrieval with TE buffer pH 9.0; (*) Alternatively, antigen retrieval may be performed with citrate buffer pH 6.0</b>	

## Background Information

LIN28 is one of the four key human factors (OCT4, SOX2, NANOG and LIN28) used to reprogram human fibroblasts to an embryonic stem (ES) cell-like state known as the induced pluripotent stem (Ips) cell. Lin28 is a marker of undifferentiated human embryonic stem cells and a cytoplasmic Mrna-binding protein that binds to and enhances the translation of the IGF2 Mrna. LIN28 has also been shown to bind to the let-7 pre-miRNA and block production of the mature let-7 microRNA in mouse embryonic stem cells. The calculated molecular weight of LIN28 is 23 kDa, but the modified LIN28 is about 28 kDa.

## Notable Publications

Author	Pubmed ID	Journal	Application
Wanming He	30742067	Oncogene	WB
Miki Hara-Yokoyama	31424977	J Histochem Cytochem	

## Storage

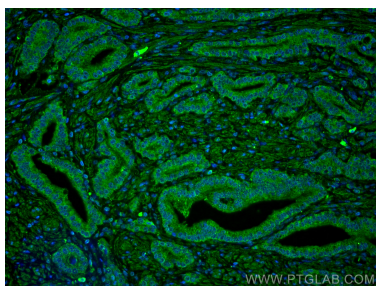
**Storage:**  
Store at -20°C. Stable for one year after shipment.  
**Storage Buffer:**  
PBS with 0.02% sodium azide and 50% glycerol pH 7.3.  
Aliquoting is unnecessary for -20°C storage

\*\*\* 20ul sizes contain 0.1% BSA

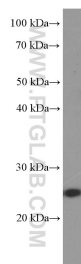
For technical support and original validation data for this product please contact:  
T: 1 (888) 4PTGLAB (1-888-478-4522) (toll free in USA), or 1(312) 455-8498 (outside USA)  
E: proteintech@ptglab.com  
W: ptglab.com

This product is exclusively available under Proteintech Group brand and is not available to purchase from any other manufacturer.

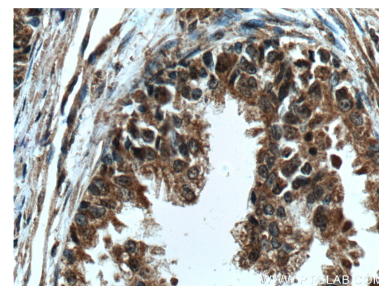
## Selected Validation Data



Immunofluorescent analysis of (4% PFA) fixed human prostate cancer tissue using LIN28 antibody (60344-1-Ig, Clone: 4F5G6) at dilution of 1:400 and CoraLite®488-Conjugated AffiniPure Goat Anti-Mouse IgG(H+L).



NCCIT cell were subjected to SDS PAGE followed by western blot with 60344-1-Ig (LIN28 antibody) at dilution of 1:1000 incubated at room temperature for 1.5 hours.



Immunohistochemical analysis of paraffin-embedded human prostate cancer tissue slide using 60344-1-Ig (LIN28 Antibody) at dilution of 1:200 (under 40x lens). Heat mediated antigen retrieval with Tris-EDTA buffer (pH 9.0).