

For Research Use Only

NR1H2 Monoclonal ANTIBODY



Catalog Number: 60345-1-Ig

Featured Product

4 Publications

Basic Information

Catalog Number:
60345-1-Ig

Size:
150 µg/150 µl

Source:

Mouse

Isotype:

IgG1

Purification Method:

Protein G purification

Immunogen Catalog Number:

AG5635

GenBank Accession Number:
BC047750

GeneID (NCBI):
7376

Full Name:

nuclear receptor subfamily 1, group H, member 2

Calculated MW:

51 kDa

Observed MW:

51 kDa

Recommended Dilutions:
WB 1:500-1:2000

Applications

Tested Applications:

WB, ELISA

Cited Applications:

WB

Species Specificity:

human, pig

Cited Species:

human

Positive Controls:

WB : human liver tissue; pig liver tissue

Note: suggested antigen retrieval with TE buffer pH 9.0; (*) Alternatively, antigen retrieval may be performed with citrate buffer pH 6.0

Background Information

NR1H2, also known as LXRβ, is a liver X receptors, which form a subfamily of the nuclear receptor superfamily and are key regulators of macrophage function, controlling transcriptional programs involved in lipid homeostasis and inflammation. It preferentially bind to double-stranded oligonucleotide direct repeats, which have the consensus half-site sequence 5'-AGGTCA-3' and 4-nt spacing (DR-4). It involves in the regulation of cholesterol uptake through MYLIP-dependent ubiquitination of LDLR, VLDLR and LRP8.

Notable Publications

Author	Pubmed ID	Journal	Application
Fenghua Guo	30224060	Biochem Biophys Res Commun	WB
Ying Liu	30309895	J Lipid Res	WB
Ying Liu	29298812	J Lipid Res	WB

Storage

Storage:

Store at -20°C. Stable for one year after shipment.

Storage Buffer:

PBS with 0.02% sodium azide and 50% glycerol pH 7.3.

Aliquoting is unnecessary for -20°C storage

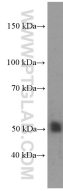
For technical support and original validation data for this product please contact:

T: 1 (888) 4PTGLAB (1-888-478-4522) (toll free in USA), or 1(312) 455-8498 (outside USA)

E: proteintech@ptglab.com
W: ptglab.com

This product is exclusively available under Proteintech Group brand and is not available to purchase from any other manufacturer.

Selected Validation Data



human liver tissue were subjected to SDS PAGE followed by western blot with 60345-1-Ig (NR1H2 Antibody) at dilution of 1:1000 incubated at room temperature for 1.5 hours