

For Research Use Only

Anti-Human CD107a (H4A3)

Catalog Number: 65051-1-Ig



Basic Information

Catalog Number:

65051-1-Ig

Size:

100ug, 0.1 mg/ml

Source:

Mouse

Isotype:

IgG1

GenBank Accession Number:

BC006345

GeneID (NCBI):

3916

Full Name:

lysosomal-associated membrane protein 1

Purification Method:

Protein A purification

CloneNo.:

H4A3

Recommended Dilutions:

IF 1:50-1:500

Applications

Tested Applications:

FC, IF, ELISA

Species Specificity:

Human

Positive Controls:

IF : HeLa cells,

Background Information

LAMP1 (CD107a) is a heavily glycosylated membrane protein enriched in the lysosomal membrane. LAMP1 is extensively glycosylated with asparagine-linked oligosaccharides which protect it from intracellular proteolysis (PMID: 10521503). Although LAMP1 is expressed largely in the endosome-lysosomal membrane of cells, it is also found on the plasma membrane (PMID: 16168398). Elevated LAMP1 expression at the cell surface has also been detected during platelet and granulocytic cell activation, as well as in some tumor cells (PMID: 29085473). LAMP1 functions to provide selectins with carbohydrate ligands. This protein has also been shown to be a marker of degranulation on lymphocytes such as CD8+ and NK cells and may also play a role in tumor cell differentiation and metastasis (PMID: 18835598; 29085473; 9426697).

Storage

Storage:

Store at 2-8°C.

Storage Buffer:

PBS with 0.1% sodium azide and 0.5% BSA, pH 7.3.

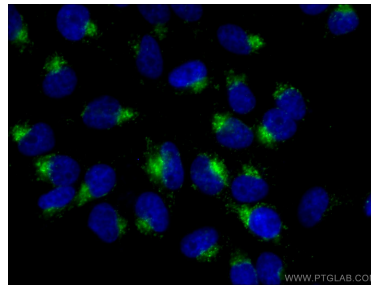
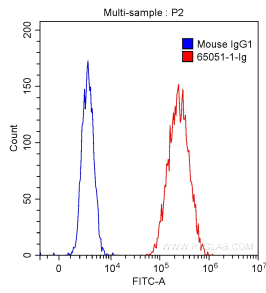
For technical support and original validation data for this product please contact:

T: 1 (888) 4PTGLAB (1-888-478-4522) (toll free in USA), or 1(312) 455-8498 (outside USA)

E: proteintech@ptglab.com
W: ptglab.com

This product is exclusively available under Proteintech Group brand and is not available to purchase from any other manufacturer.

Selected Validation Data



1X10⁶ HeLa cells were intracellularly stained with 0.50 ug Anti-Human CD107a (65051-1-Ig, Clone: H4A3) (red) or 0.50 ug isotype control antibody (blue) and CoraLite®488-Conjugated AffiniPure Goat Anti-Mouse IgG(H+L) with dilution of 1:1000. Cells were fixed with 90% MeOH.

Immunofluorescent analysis of (4% PFA) fixed HeLa cells using 65051-1-Ig (CD107a antibody) at dilution of 1:100 and CoraLite488-Conjugated AffiniPure Goat Anti-Mouse IgG(H+L).