

For Research Use Only

Anti-Human CD44 (F10-44-2)

Catalog Number: 65063-1-Ig



Basic Information

Catalog Number:

65063-1-Ig

Size:

100ug, 0.1 mg/ml

Source:

Mouse

Isotype:

IgG2a

GenBank Accession Number:

BC004372

GeneID (NCBI):

960

Full Name:

CD44 molecule (Indian blood group)

Calculated MW:

742 aa, 82 kDa

Purification Method:

Affinity purification

CloneNo.:

F10-44-2

Applications

Tested Applications:

FC, ELISA

Species Specificity:

Human

Background Information

CD44 is a type I transmembrane glycoprotein expressed on embryonic stem cells and in various levels on other cell types including connective tissues and bone marrow. CD44 expression is also upregulated in subpopulations of cancer cells and is recognized as a molecular marker for cancer stem cells (PMID: 29747682). It is a cell-surface receptor that mediates cell-cell and cell-matrix interactions through its affinity for hyaluronic acid (HA) and possibly also through its affinity for other ligands (PMID: 10694938). Adhesion with HA plays an important role in cell migration, tumor growth and progression. CD44 is also involved in lymphocyte activation, recirculation and homing, and in hematopoiesis.

Storage

Storage:

Store at 2-8°C.

Storage Buffer:

Borate buffered saline, pH 8.2.

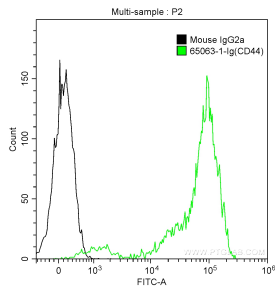
For technical support and original validation data for this product please contact:

T: 1 (888) 4PTGLAB (1-888-478-4522) (toll free in USA), or 1(312) 455-8498 (outside USA)

E: proteintech@ptglab.com
W: ptglab.com

This product is exclusively available under Proteintech Group brand and is not available to purchase from any other manufacturer.

Selected Validation Data



1X10⁶ human peripheral blood lymphocytes were surface stained with 0.25 ug Anti-Human CD44 (65063-1-Ig, Clone:F10-44-2) and CoraLite®488-Conjugated AffiniPure Goat Anti-Mouse IgG(H+L) at dilution 1:1000 (green), or stained with 0.25 ug Mouse IgG2a Isotype Control Antibody and CoraLite®488-Conjugated AffiniPure Goat Anti-Mouse IgG(H+L) at dilution 1:1000 (black). Samples were not fixed.