

For Research Use Only

# Anti-Mouse CD16/CD32 (2.4G2)

Catalog Number: 65080-1-Ig **2 Publications**



## Basic Information

<b>Catalog Number:</b> 65080-1-Ig	<b>GenBank Accession Number:</b> BC038070	<b>Purification Method:</b> Affinity purification
<b>Size:</b> 500ug, 0.5 mg/ml	<b>GeneID (NCBI):</b> 14130	<b>CloneNo.:</b> 2.4G2
<b>Source:</b> Rat	<b>UNIPROT ID:</b> P08101	<b>Recommended Dilutions:</b> FC: 0.5 ug per 10 <sup>6</sup> cells in 100 µl suspension
<b>Isotype:</b> IgG2b, kappa	<b>Full Name:</b> Fc receptor, IgG, low affinity IIb	

## Applications

<b>Tested Applications:</b> FC	<b>Positive Controls:</b> FC : mouse splenocytes,
<b>Cited Applications:</b> FC	
<b>Species Specificity:</b> mouse	
<b>Cited Species:</b> mouse	

## Background Information

CD16 (FcγRIII) is a 50-70 kDa low affinity Fc receptor found on the surface of natural killer cells, neutrophil polymorphonuclear leukocytes, monocytes and macrophages. CD16 mediates antibody-dependent cellular cytotoxicity (ADCC) and other antibody-dependent responses, such as phagocytosis. CD32 (FcγRII) is a 40 kD transmembrane glycoprotein that binds to the Fc region of IgG with low affinity. CD32 is present on phagocytic cells such as macrophages and neutrophils, and is involved in the process of phagocytosis and clearing of immune complexes. The 2.4G2 antibody reacts with the extracellular domains of mouse CD16 (FcRIII) and CD32 (FcRII) (PMID: 90108; 8406898). Rat anti mouse CD16/CD32 antibody, clone 2.4G2 is specific to the common epitope of CD16 and CD32. It can be used for blocking non-specific binding of immunoglobulins to the Fc receptors by preincubating the cells with the purified antibody at 1 ug per million cells in 100 uL volume for 5-10 minutes prior to immunostaining.

## Notable Publications

Author	Pubmed ID	Journal	Application
Chenxing Zhang	40050525	Breast Cancer Res Treat	FC
Zefan Liu	37229252	Front Pharmacol	FC

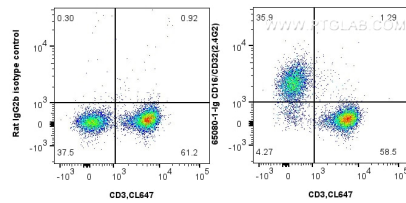
## Storage

**Storage:**  
Store at 2-8°C. Stable for one year after shipment.  
**Storage Buffer:**  
PBS with 0.09% sodium azide, pH7.3

For technical support and original validation data for this product please contact:  
T: 1 (888) 4PTGLAB (1-888-478-4522) (toll free in USA), or 1(312) 455-8498 (outside USA)  
E: [proteintech@ptglab.com](mailto:proteintech@ptglab.com)  
W: [ptglab.com](http://ptglab.com)

This product is exclusively available under Proteintech Group brand and is not available to purchase from any other manufacturer.

## Selected Validation Data



1x10<sup>6</sup> mouse splenocytes were surface stained with 0.5 ug Anti-Mouse CD16 / CD32 (2.4G2) (65080-1-Ig, Clone: 2.4G2) or 0.5 ug Rat IgG2b Isotype Control (LTF-2) (65211-1-Ig, Clone: LTF-2) and FITC anti-rat IgG2b Antibody. Cells were co-stained with 0.5 ug CoraLite® Plus 647 Anti-Mouse CD3 (17A2) (CL647-65077, Clone: 17A2). Cells were not fixed.