

For Research Use Only

# Anti-Human CD8a (OKT8)

Catalog Number: 65135-1-Ig



## Basic Information

Catalog Number:	GenBank Accession Number:	Purification Method:
65135-1-Ig	BC025715	Affinity purification
Size:	GeneID (NCBI):	CloneNo.:
500ug, 0.5 mg/ml	925	OKT8
Source:	Full Name:	
Mouse	CD8a molecule	
Isotype:	Calculated MW:	
IgG2a, kappa	235 aa, 26 kDa	

## Applications

Tested Applications:  
FC

Species Specificity:  
Human

## Background Information

CD8 is a transmembrane glycoprotein composed of two disulfide-linked chains. It can be present as a homodimer of CD8a or as a heterodimer of CD8a and CD8 $\beta$  (PMID: 3264320; 8253791). CD8 is found on most thymocytes. The majority of class I-restricted T cells express mostly the CD8a $\beta$  heterodimer while CD8aa homodimers alone have been found on some gut intraepithelial T cells, on some T cell receptor (TCR)  $\gamma\delta$  T cells and on NK cells (PMID: 2111591; 1831127; 8420975). CD8 acts as a co-receptor that binds to MHC class-I and participates in cytotoxic T cell activation (PMID: 8499079). During T cell development, CD8 is required for positive selection of CD4-/CD8+ T cells (PMID: 1968084).

## Storage

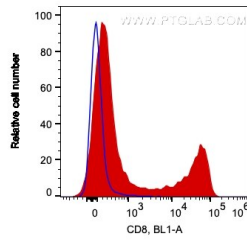
Storage:  
Store at 2-8°C. Stable for one year after shipment.

Storage Buffer:  
PBS with 0.09% sodium azide.

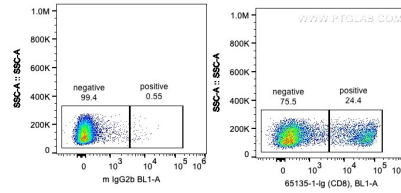
For technical support and original validation data for this product please contact:  
T: 1 (888) 4PTGLAB (1-888-478-4522) (toll free in USA), or 1(312) 455-8498 (outside USA)  
E: [proteintech@ptglab.com](mailto:proteintech@ptglab.com)  
W: [ptglab.com](http://ptglab.com)

This product is exclusively available under Proteintech Group brand and is not available to purchase from any other manufacturer.

## Selected Validation Data



1X10<sup>6</sup> human PBMCs were surface stained with 0.2 ug Anti-Human CD8a (65135-1-Ig, Clone:OKT8) and CoraLite®488-Conjugated AffiniPure Goat Anti-Mouse IgG(H+L) at dilution 1:1000 (red), and 0.2 ug Mouse IgG2a Isotype Control (CL488-66360-2, Clone: K11A1B2A2) (blue). Cells were not fixed. Lymphocytes are gated.



1X10<sup>6</sup> human PBMCs were surface stained with 0.2 ug Anti-Human CD8a (65135-1-Ig, Clone:OKT8) and CoraLite®488-Conjugated AffiniPure Goat Anti-Mouse IgG(H+L) at dilution 1:1000 (red), and 0.2 ug Mouse IgG2a Isotype Control (CL488-66360-2, Clone: K11A1B2A2) (blue). Cells were not fixed. Lymphocytes are gated.