

For Research Use Only

Anti-Human CD4 (SK3)

Catalog Number: 65147-1-Ig



Basic Information

Catalog Number:

65147-1-Ig

Size:

500ug, 500 µg/ml

Source:

Mouse

Isotype:

IgG1, kappa

GenBank Accession Number:

BC025782

GeneID (NCBI):

920

ENSEMBL Gene ID:

ENSG00000010610

Full Name:

CD4 molecule

Calculated MW:

55 kDa

Purification Method:

Affinity purification

CloneNo.:

SK3

Recommended Dilutions:

FC: 0.2 ug per 10⁶ cells in 100 µl suspension

Affinity:

K_D = 8.82 × 10⁻¹¹M

K_{Off} = 2.00 × 10⁻⁵M

K_{On} = 2.26 × 10⁵M

Applications

Tested Applications:

FC

Species Specificity:

Human

Positive Controls:

FC : human PBMCs,

Background Information

CD4 is a 55-kDa transmembrane glycoprotein expressed on T helper cells, majority of thymocytes, monocytes, macrophages, and dendritic cells (PMID: 9304802; 12213222). CD4 is an accessory protein for MHC class-II antigen/T-cell receptor interaction. It plays an important role in T helper cell development and activation (PMID: 9539765; 3112582). CD4 serves as a receptor for the human immunodeficiency virus (HIV) (PMID: 9304802).

Storage

Storage:

Store at 2-8°C. Stable for one year after shipment.

Storage Buffer:

PBS with 0.09% sodium azide, pH7.3

For technical support and original validation data for this product please contact:

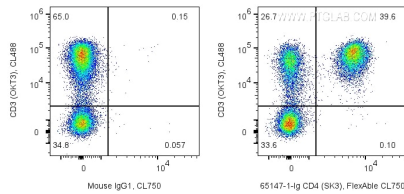
T: 1 (888) 4PTGLAB (1-888-478-4522) (toll free in USA), or 1(312) 455-8498 (outside USA)

E: proteintech@ptglab.com

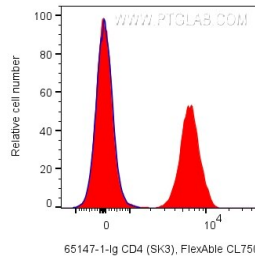
W: ptglab.com

This product is exclusively available under Proteintech Group brand and is not available to purchase from any other manufacturer.

Selected Validation Data



1X10⁶ human PBMCs were surface stained with CoraLite® Plus 488 Anti-Human CD3 and 0.2 ug Anti-Human CD4 (65147-1-Ig, Clone:SK3) labeled with FlexAble CoraLite® Plus 750 Antibody Labeling Kit for Mouse IgG1 (KFA024) (right), or Mouse IgG1 Isotype Control (left). Cells were not fixed. Lymphocytes were gated.



1X10⁶ human PBMCs were surface stained with 0.2 ug Anti-Human CD4 (65147-1-Ig, Clone:SK3) labeled with FlexAble CoraLite® Plus 750 Antibody Labeling Kit for Mouse IgG1 (KFA024) (red), or Mouse IgG1 Isotype Control (blue). Cells were not fixed. Lymphocytes were gated.