

For Research Use Only

Anti-Human MICA/MICB (6D4)

Catalog Number: 65161-1-Ig **3 Publications**



Basic Information

Catalog Number:

65161-1-Ig

Size:

500ug, 0.5 mg/ml

Source:

Mouse

Isotype:

IgG2a, kappa

GenBank Accession Number:

BC016929

GeneID (NCBI):

100507436

UNIPROT ID:

Q29983

Full Name:

MHC class I polypeptide-related sequence A

Calculated MW:

383 aa, 43 kDa

Purification Method:

Purified by protein-A affinity chromatography

CloneNo.:

6D4

Recommended Dilutions:

FC: 0.2 ug per 10⁶ cells in 100 µl suspension

Applications

Tested Applications:

FC

Cited Applications:

WB

Species Specificity:

Human

Cited Species:

human

Positive Controls:

FC : HeLa cells,

Background Information

Human MHC class I chain-related genes located within the HLA class I region of chromosome 6 encode MHC class I chain-related A and B (MICA and MICB) (PMID: 11429322). MICA and MICB are stress-inducible surface molecules that are not associated with β 2-microglobulin and do not present peptides (PMID: 9497295). They are expressed in intestinal epithelium and many epithelial tumors (PMID: 10359807). MICA and MICB are ligands for NKG2D which is an activating receptor that is expressed on most natural killer (NK) cells, CD8 $\alpha\beta$ T cells, and $\gamma\delta$ T cells (PMID: 10426993; 11491531). The monoclonal antibody 6D4 recognizes MICA and MICB.

Notable Publications

Author	Pubmed ID	Journal	Application
Fei Liu	36497344	Cancers (Basel)	WB
Yang Wang	32349046	J Immunother	WB
Hui-Yang Wu	34999394	Int Immunopharmacol	WB

Storage

Storage:

Store at 2-8°C. Stable for one year after shipment.

Storage Buffer:

PBS with 0.09% sodium azide, pH7.3

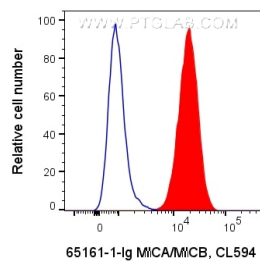
For technical support and original validation data for this product please contact:

T: 1 (888) 4PTGLAB (1-888-478-4522) (toll free in USA), or 1(312) 455-8498 (outside USA)

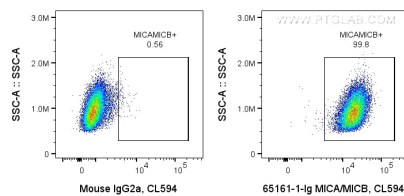
E: proteintech@ptglab.com
W: ptglab.com

This product is exclusively available under Proteintech Group brand and is not available to purchase from any other manufacturer.

Selected Validation Data



1X10⁶ HeLa cells were surface stained with 0.2 ug Anti-Human MICA/MICB (65161-1-Ig, Clone: 6D4) or Mouse IgG2a Isotype Control and CoraLite®594-Conjugated Goat Anti-Mouse IgG(H+L) at dilution 1:1000. Cells were not fixed.



1X10⁶ HeLa cells were surface stained with 0.2 ug Anti-Human MICA/MICB (65161-1-Ig, Clone: 6D4) or Mouse IgG2a Isotype Control and CoraLite®594-Conjugated Goat Anti-Mouse IgG(H+L) at dilution 1:1000. Cells were not fixed.