

For Research Use Only

# Anti-human CD146 (P1H12)

Catalog Number: 65181-1-Ig



## Basic Information

**Catalog Number:**

65181-1-Ig

**Size:**

100ug, Concentration: 1 mg/ml by Bradford method using BSA as the standard;

**Source:**

Mouse

**Isotype:**

Mouse IgG1

**GenBank Accession Number:**

BC056418

**GeneID (NCBI):**

4162

**Full Name:**

melanoma cell adhesion molecule

**Calculated MW:**

646 aa, 72 kDa

**Purification Method:**

Purified by protein-A affinity chromatography

**CloneNo.:**

P1H12

## Applications

**Tested Applications:**

FC, ELISA

**Species Specificity:**

Rabbit, Dog, Mouse, Human

## Background Information

### Storage

**Storage:**

Store at 2-8°C.

**Storage Buffer:**

PBS with 0.1% sodium azide.

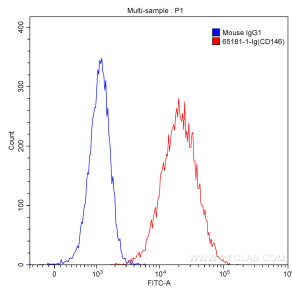
For technical support and original validation data for this product please contact:

T: 1 (888) 4PTGLAB (1-888-478-4522) (toll free in USA), or 1(312) 455-8498 (outside USA)

E: [proteintech@ptglab.com](mailto:proteintech@ptglab.com)  
W: [ptglab.com](http://ptglab.com)

**This product is exclusively available under Proteintech Group brand and is not available to purchase from any other manufacturer.**

## Selected Validation Data



1X10<sup>6</sup> HeLa cells were surface stained with 2.00 ug Purified Anti-Human CD146 (65181-1-Ig, Clone:P1H12) (red) or 2.00 ug Mouse IgG1 Isotype Control (66360-1-Ig, Clone:T1F8D3F10) (blue) and CoraLite®488-Conjugated AffiniPure Goat Anti-Mouse IgG(H+L) with dilution 1:1000. Samples were not fixed.