

For Research Use Only

Anti-Human CD13 (WM15)

Catalog Number: 65186-1-Ig



Basic Information

Catalog Number:

65186-1-Ig

Size:

100ug, 0.5 mg/ml

Source:

Mouse

Isotype:

IgG1, kappa

GenBank Accession Number:

BC058928

GeneID (NCBI):

290

ENSEMBL Gene ID:

ENSG00000166825

UNIPROT ID:

P15144

Full Name:

alanyl (membrane) aminopeptidase

Calculated MW:

110 kDa

Purification Method:

Protein A purification

CloneNo.:

WM15

Recommended Dilutions:

IF/ICC: 1:500-1:2000

FC: 0.2 ug per 10⁶ cells in 100 µl suspension

Applications

Tested Applications:

IF/ICC, FC

Species Specificity:

human, non-human primates

Positive Controls:

IF/ICC : HUVEC cells, THP-1 cells

FC : human PBMCs,

Background Information

CD13, also named as APN, ANPEP (aminopeptidase N) or PEPN, is belongs to the peptidase M1 family. CD13 is a heavily glycosylated, ~150-240 kDa, type-II membrane, expressed by most cells of myeloid origin including monocytes, macrophages, granulocytes, and their hematopoietic precursors. It is also abundantly expressed in the brush border of epithelial cells from renal proximal tubules and small intestine, in prostatic epithelial cells, in bile duct canaliculi, in mast cells, and, in some cases, in fibroblasts and smooth muscle cells. CD13 is a multifunctional protein and plays varying roles in cell migration, cell proliferation, cell differentiation and so on. CD13 participates in angiogenesis generating and modulating angiogenic signals, and can be a marker of angiogenic vessels. CD13 is also a pan-myeloid marker, present on mature granulocytes and monocytes. (PMID: 8805662, 10098327, 18603472, 18097955, 17897790, 17888402, 21339174)

Storage

Storage:

Store at 2-8°C. Stable for one year after shipment.

Storage Buffer:

PBS with 0.09% sodium azide, pH7.3

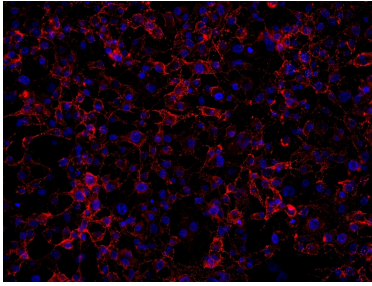
For technical support and original validation data for this product please contact:

T: 1 (888) 4PTGLAB (1-888-478-4522) (toll free in USA), or 1(312) 455-8498 (outside USA)

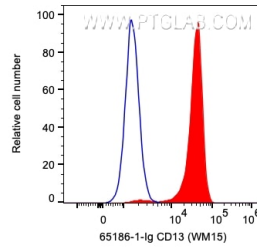
E: proteintech@ptglab.com
W: ptglab.com

This product is exclusively available under Proteintech Group brand and is not available to purchase from any other manufacturer.

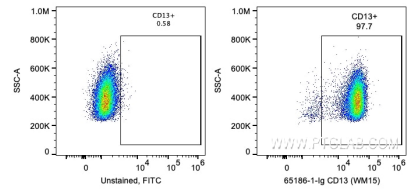
Selected Validation Data



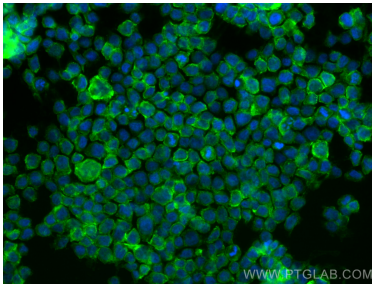
Immunofluorescent analysis of un-fixed HUVEC cells using CD13 antibody (65186-1-Ig, Clone: WM15) at dilution of 1:1000 and Multi-rAb CoraLite® Plus 594-Goat Anti-Mouse Recombinant Secondary Antibody (H+L) (RGAM004).



1X10⁶ human PBMCs were surface stained with 0.2 ug Anti-Human CD13 (65186-1-Ig, Clone:WM15) and FITC-Goat anti-Mouse IgG at dilution 1:1000 or unstained. Cells were not fixed. Monocytes were gated.



1X10⁶ human PBMCs were surface stained with 0.2 ug Anti-Human CD13 (65186-1-Ig, Clone:WM15) and FITC-Goat anti-Mouse IgG at dilution 1:1000 or unstained. Cells were not fixed. Monocytes were gated.



Immunofluorescent analysis of (4% PFA) fixed THP-1 cells using CD13 antibody (65186-1-Ig, Clone: WM15) at dilution of 1:1000 and CoraLite®488-Conjugated Goat Anti-Mouse IgG(H+L) (SA00013-1).