

For Research Use Only

Anti-Human HLA-DRA (L243)

Catalog Number: 65218-1-Ig



Basic Information

Catalog Number:

65218-1-Ig

Size:

100ug, 500 µg/ml

Source:

Mouse

Isotype:

Mouse IgG2a, kappa

GenBank Accession Number:

BC032350

GeneID (NCBI):

3122

Full Name:

major histocompatibility complex,
class II, DR alpha

Calculated MW:

254 aa, 29 kDa

Purification Method:

Protein A purification

CloneNo.:

L243

Applications

Tested Applications:

FC

Species Specificity:

Human

Background Information

Storage

Storage:

Store at 2-8°C.

Storage Buffer:

PBS with 0.1% sodium azide, pH 7.3.

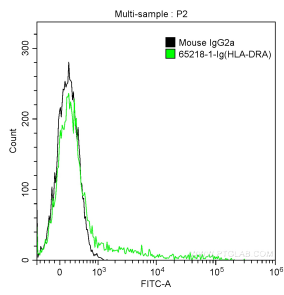
For technical support and original validation data for this product please contact:

T: 1 (888) 4PTGLAB (1-888-478-4522) (toll free
in USA), or 1(312) 455-8498 (outside USA)

E: proteintech@ptglab.com
W: ptglab.com

This product is exclusively available under Proteintech Group brand and is not available to purchase from any other manufacturer.

Selected Validation Data



1X10⁶ human peripheral blood lymphocytes were surface stained with 0.5 ug Anti-Human HLA-DRA (65218-1-Ig, Clone: L243) and CoraLite®488-Conjugated AffiniPure Goat Anti-Mouse IgG(H+L) at dilution 1:1000 (green), or stained with 0.5 ug isotype control and CoraLite®488-Conjugated AffiniPure Goat Anti-Mouse IgG(H+L) at dilution 1:1000 (black). Samples were not fixed.