

# MCL1

## Monoclonal ANTIBODY

Catalog Number: 66026-1-Ig

Featured Product

7 Publications

### Basic Information

Catalog Number:  
66026-1-Ig

Size:  
181 µg/150 µl

Source:  
Mouse

Isotype:  
IgG2b

Purification Method:  
Protein A purification

Immunogen Catalog Number:  
AG10609

GenBank Accession Number:  
BC107735

GeneID (NCBI):  
4170

Full Name:  
myeloid cell leukemia sequence 1 (BCL2-related)

Calculated MW:  
350aa, 37 kDa

Observed MW:  
37 kDa

Recommended Dilutions:

WB 1:2500-1:10000  
IHC 1:250-1:1000  
IF 1:50-1:500

### Applications

Tested Applications:

IF, IHC, WB, ELISA

Cited Applications:

IHC, WB

Species Specificity:

human

Cited Species:

human

**Note-IHC: suggested antigen retrieval with TE buffer pH 9.0; (\*) Alternatively, antigen retrieval may be performed with citrate buffer pH 6.0**

Positive Controls:

WB : Jurkat cells; Raji cells, HeLa cells, A431 cells

IHC : human breast cancer tissue;

IF : MCF-7 cells; HeLa cells

### Background Information

MCL-1 is an anti-apoptotic member of the Bcl-2 family originally isolated from the ML-1 human myeloid leukemia cell line. Similar to BCL2 and BCL2L1, MCL1 can interact with BAX and/or BAK1 to inhibit mitochondria-mediated apoptosis. Mcl-1 is critical for the proliferation and survival of myeloma cells in vitro, and overexpression of Mcl-1 protein in myeloma cells is associated with relapse and short event-free survival in multiple myeloma patients. Recent studies show that MCL-1 is upregulated in numerous haematological and solid tumour malignancies. Therefore, MCL-1 has been suggested as a potential new therapeutic target.

### Notable Publications

Author	Pubmed ID	Journal	Application
Yingyan Han	31423895	Epigenetics	WB
Yiming Sun	26054380	J Bioenerg Biomembr	WB
Huiwen Hu	26171012	Oncol Lett	WB

### Storage

Storage:

Store at -20°C. Stable for one year after shipment.

Storage Buffer:

PBS with 0.02% sodium azide and 50% glycerol pH 7.3.

Aliquoting is unnecessary for -20°C storage

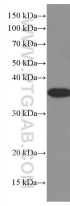
For technical support and original validation data for this product please contact:

T: 1 (888) 4PTGLAB (1-888-478-4522) (toll free in USA), or 1(312) 455-8498 (outside USA)

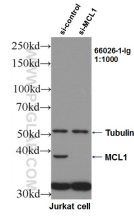
E: [proteintech@ptglab.com](mailto:proteintech@ptglab.com)  
W: [ptglab.com](http://ptglab.com)

This product is exclusively available under Proteintech Group brand and is not available to purchase from any other manufacturer.

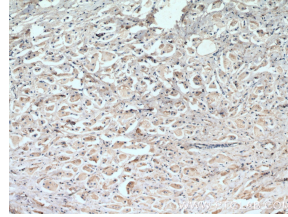
## Selected Validation Data



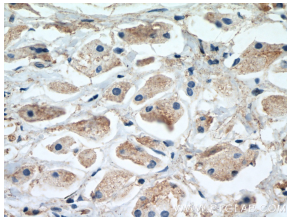
Jurkat cells were subjected to SDS PAGE followed by western blot with 66026-1-ig (MCL1 antibody) at dilution of 1:5000 incubated at room temperature for 1.5 hours



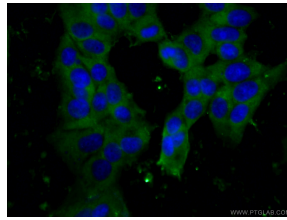
WB result of MCL1 antibody (66026-1-ig, 1:1000) with si-Control and si-MCL1 transfected Jurkat cells.



Immunohistochemical analysis of paraffin-embedded human breast cancer tissue slide using 66026-1-ig (MCL1 antibody) at dilution of 1:500 (under 10x lens) heat mediated antigen retrieved with Tris-EDTA buffer(pH9).



Immunohistochemical analysis of paraffin-embedded human breast cancer tissue slide using 66026-1-ig (MCL1 antibody) at dilution of 1:500 (under 40x lens) heat mediated antigen retrieved with Tris-EDTA buffer(pH9).



Immunofluorescent analysis of (-20°C Ethanol) fixed MCF-7 cells using 66026-1-ig (MCL1 antibody) at dilution of 1:100 and CoralLite488-Conjugated AffiniPure Goat Anti-Mouse IgG(H+L)