

For Research Use Only

Cyclophilin B Monoclonal antibody

Catalog Number: 66047-1-Ig

Featured Product



Basic Information

Catalog Number:

66047-1-Ig

Size:

150ul, Concentration: 1400 ug/ml by
Nanodrop and 1000 ug/ml by Bradford
method using BSA as the standard;

Source:

Mouse

Isotype:

IgG2a

Immunogen Catalog Number:

AG17957

GenBank Accession Number:

BC032138

GeneID (NCBI):

5479

UNIPROT ID:

P23284

Full Name:

peptidylprolyl isomerase B
(cyclophilin B)

Calculated MW:

216 aa, 24 kDa

Observed MW:

19-24 kDa

Purification Method:

Protein A purification

CloneNo.:

8H4F1

Recommended Dilutions:

WB: 1:1000-1:8000

IHC: 1:250-1:1000

IF/ICC: 1:400-1:1600

FC (Intra): 0.40 ug per 10⁶ cells in a
100 µl suspension

Applications

Tested Applications:

WB, IHC, IF/ICC, FC (Intra), ELISA

Species Specificity:

human, mouse

**Note-IHC: suggested antigen retrieval with
TE buffer pH 9.0; (*) Alternatively, antigen
retrieval may be performed with citrate
buffer pH 6.0**

Positive Controls:

WB: HeLa cells, MCF-7 cells, HEK-293 cells, Jurkat
cells, RAW 264.7 cells, ROS1728 cells, PC-12 cells, C6
cells

IHC: human pancreas cancer tissue,

IF/ICC: HeLa cells,

FC (Intra): HeLa cells,

Background Information

PPIB, also named as CYPB, SCYLP, PPIase B and CYP-51, belongs to the cyclophilin-type PPIase family and PPIase B subfamily. PPIases accelerate the folding of proteins. It catalyzes the cis-trans isomerization of proline imidic peptide bonds in oligopeptides. PPIB is secreted in biological fluids such as blood or milk and binds to a specific receptor present on the human lymphoblastic cell line Jurkat and on human peripheral blood lymphocytes. The full-length of PPIB has 216aa (24 kDa), and a 33aa-signal peptide could be removed in the mature form (about 19 kDa).

Storage

Storage:

Store at -20°C. Stable for one year after shipment.

Storage Buffer:

PBS with 0.02% sodium azide and 50% glycerol, pH7.3

Aliquoting is unnecessary for -20°C storage

*** 20ul sizes contain 0.1% BSA

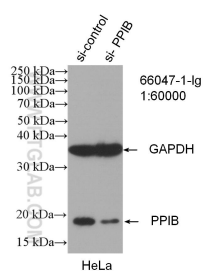
For technical support and original validation data for this product please contact:

T: 1 (888) 4PTGLAB (1-888-478-4522) (toll free
in USA), or 1(312) 455-8498 (outside USA)

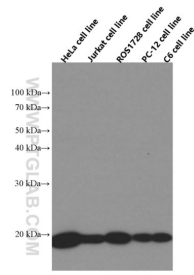
E: proteintech@ptglab.com
W: ptglab.com

This product is exclusively available under Proteintech
Group brand and is not available to purchase from any
other manufacturer.

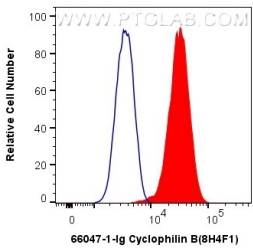
Selected Validation Data



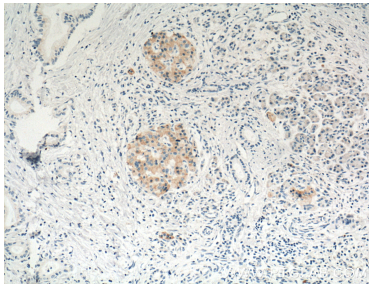
WB result of Cyclophilin B antibody (66047-1-Ig; 1:60000; incubated at room temperature for 1.5 hours) with sh-Control and sh-Cyclophilin B transfected HeLa cells.



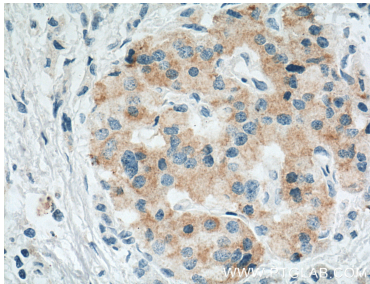
HeLa/Jurkat/ROS1728/PC-12/C6 cells were subjected to SDS PAGE followed by western blot with 66047-1-Ig (Cyclophilin B antibody at dilution of 1:4000 incubated at room temperature for 1.5 hours.



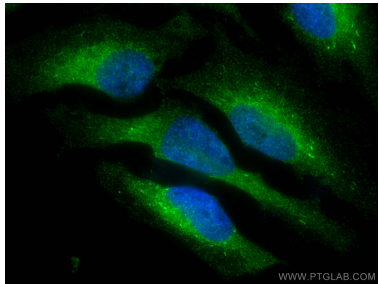
1X10⁶ HeLa cells were intracellularly stained with 0.4 ug Anti-Human Cyclophilin B (66047-1-Ig, Clone:8H4F1) and CoraLite®488-Conjugated Goat Anti-Mouse IgG(H+L) at dilution 1:1000 (red), or 0.4 ug Mouse IgG2a Isotype Control (C1.18.4) (65208-1-Ig, Clone: C1.18.4) (blue). Cells were fixed with 4% PFA and permeabilized with Flow Cytometry Perm Buffer (PF00011-C).



Immunohistochemical analysis of paraffin-embedded human pancreas cancer tissue slide using 66047-1-Ig (Cyclophilin B antibody at dilution of 1:200 (under 10x lens). Heat mediated antigen retrieval with Tris-EDTA buffer (pH 9.0).



Immunohistochemical analysis of paraffin-embedded human pancreas cancer tissue slide using 66047-1-Ig (Cyclophilin B antibody at dilution of 1:200 (under 40x lens). Heat mediated antigen retrieval with Tris-EDTA buffer (pH 9.0).



Immunofluorescent analysis of (4% PFA) fixed HeLa cells using Cyclophilin B antibody (66047-1-Ig, Clone: 8H4F1) at dilution of 1:800 and CoraLite®488-Conjugated Goat Anti-Mouse IgG(H+L).