

For Research Use Only

Albumin Monoclonal antibody

Catalog Number: 66051-1-Ig **50 Publications**



Basic Information

Catalog Number: 66051-1-Ig	GenBank Accession Number: BC034023	Purification Method: Protein G purification
Size: 150ul , Concentration: 1000 ug/ml by Nanodrop;	GeneID (NCBI): 213	CloneNo.: 4A1C11
Source: Mouse	UNIPROT ID: P02768	Recommended Dilutions: WB: 1:5000-1:50000 IHC: 1:50-1:500 IF-P: 1:200-1:800 IF/ICC: 1:200-1:800
Isotype: IgG1	Full Name: albumin	
Immunogen Catalog Number: AG9885	Calculated MW: 609 aa, 69 kDa Observed MW: 66 kDa	

Applications

Tested Applications: WB, IHC, IF/ICC, IF-P, ELISA	Positive Controls: WB : human plasma tissue, human liver tissue IHC : human liver tissue, IF-P : mouse liver tissue, IF/ICC : HepG2 cells,
Cited Applications: WB, IHC, IF, IP	
Species Specificity: human, rat, pig	
Cited Species: human, mouse, rat, pig, rabbit	
Note-IHC: suggested antigen retrieval with TE buffer pH 9.0; (*) Alternatively, antigen retrieval may be performed with citrate buffer pH 6.0	

Background Information

Albumin is the most abundant protein in blood plasma. Alterations of level of serum albumin are linked to variety of diseases. Albumin is expressed exclusively by well-differentiated hepatocytes, thus anti-albumin has been used to mark hepatocytes. (21388516, 23832071) In addition, glycated serum albumin is also a potential diabetes biomarker.

Notable Publications

Author	Pubmed ID	Journal	Application
Shifeng Tong	36181861	Cryobiology	IF
Hai Xie	33104828	Diabetologia	IF
Juan Chen	30473025	Life Sci	WB

Storage

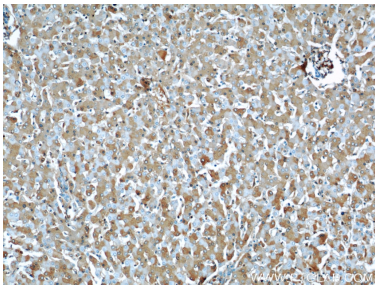
Storage:
Store at -20°C. Stable for one year after shipment.
Storage Buffer:
PBS with 0.02% sodium azide and 50% glycerol, pH7.3
Aliquoting is unnecessary for -20°C storage

*** 20ul sizes contain 0.1% BSA

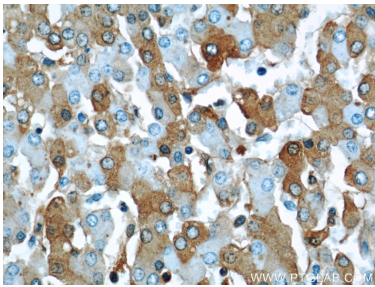
For technical support and original validation data for this product please contact:
T: 1 (888) 4PTGLAB (1-888-478-4522) (toll free in USA), or 1(312) 455-8498 (outside USA)
E: proteintech@ptglab.com
W: ptglab.com

This product is exclusively available under Proteintech Group brand and is not available to purchase from any other manufacturer.

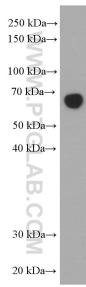
Selected Validation Data



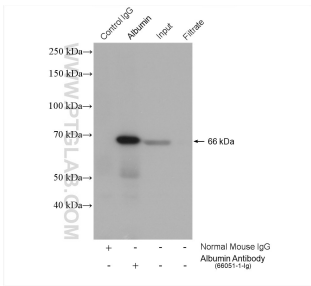
Immunohistochemical analysis of paraffin-embedded human liver using 66051-1-Ig(Alb antibody) at dilution of 1:50 (under 10x lens).



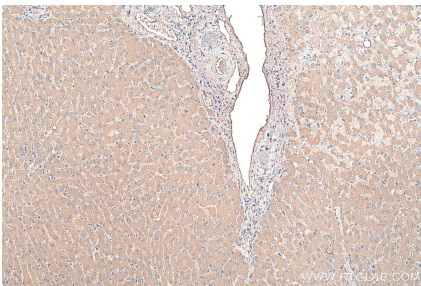
Immunohistochemical analysis of paraffin-embedded human liver using 66051-1-Ig(Alb antibody) at dilution of 1:50 (under 40x lens).



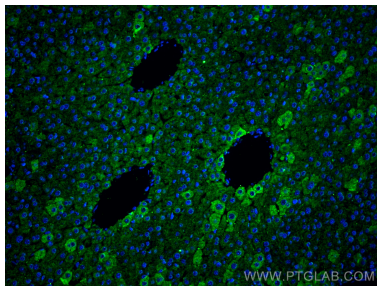
human plasma (diluted 5000 fold) was subjected to SDS PAGE followed by western blot with 66051-1-Ig (Albumin Antibody) at dilution of 1:10000 incubated at room temperature for 1.5 hours.



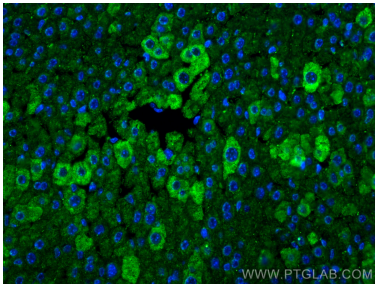
IP result of anti-Albumin (IP:66051-1-Ig, 4ug; Detection:66051-1-Ig 1:1000) with HepG2 cells lysate 1720 ug.



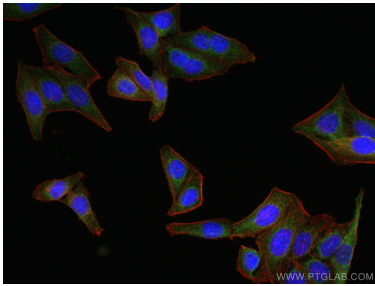
Immunohistochemical analysis of paraffin-embedded human liver tissue slide using 66051-1-Ig (Albumin antibody) at dilution of 1:64000 (under 10x lens). Heat mediated antigen retrieval with Tris-EDTA buffer (pH 9.0).



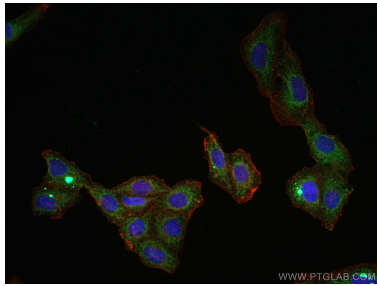
Immunofluorescent analysis of (4% PFA) fixed paraffin-embedded mouse liver tissue using Albumin antibody (66051-1-Ig, Clone: 4A1C11) at dilution of 1:400 and Coralite@488-Conjugated Goat Anti-Mouse IgG(H+L) (SA00013-1). Heat mediated antigen retrieval with Tris-EDTA buffer (pH 9.0).



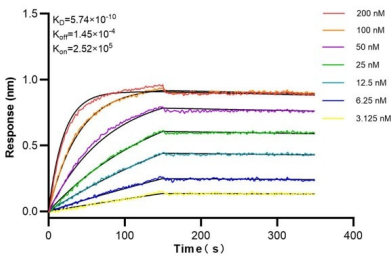
Immunofluorescent analysis of (4% PFA) fixed paraffin-embedded mouse liver tissue using Albumin antibody (66051-1-Ig, Clone: 4A1C11) at dilution of 1:400 and Coralite@488-Conjugated Goat Anti-Mouse IgG(H+L) (SA00013-1). Heat mediated antigen retrieval with Tris-EDTA buffer (pH 9.0).



Immunofluorescent analysis of (4% PFA) fixed HepG2 cells using Albumin antibody (66051-1-Ig, Clone: 4A1C11) at dilution of 1:400 and Coralite@488-Conjugated AffiniPure Goat Anti-Mouse IgG(H+L), CL594-Phalloidin (red).



Immunofluorescent analysis of (4% PFA) fixed HepG2 cells using Albumin antibody (66051-1-Ig, Clone: 4A1C11) at dilution of 1:400 and Coralite@488-Conjugated AffiniPure Goat Anti-Mouse IgG(H+L), CL594-Phalloidin (red).



Biolayer interferometry (BLI) kinetic assays of 66051-1-Ig against Human Albumin were performed. The affinity constant is 0.574 nM