

For Research Use Only

Caveolin-1 Monoclonal antibody

Catalog Number: 66067-1-Ig

Featured Product

25 Publications



Basic Information

Catalog Number: 66067-1-Ig	GenBank Accession Number: BC006432	Purification Method: Protein G purification
Size: 150ul , Concentration: 1000 ug/ml by Nanodrop;	GeneID (NCBI): 857	CloneNo.: 6C2B2
Source: Mouse	UNIPROT ID: Q03135	Recommended Dilutions: WB: 1:2000-1:50000 IHC: 1:2000-1:8000 IF-P: 1:200-1:800 IF/ICC: 1:200-1:800
Isotype: IgG1	Full Name: caveolin 1, caveolae protein, 22kDa	
Immunogen Catalog Number: AG8049	Calculated MW: 22 kDa	
	Observed MW: 20-25 kDa	

Applications

Tested Applications: WB, IHC, IF/ICC, IF-P, ELISA	Positive Controls:
Cited Applications: WB, IHC, IF, IP	WB : A549 cells, HeLa cells, A431 cells, PC-3 cells, human heart tissue, pig heart tissue, Rat heart tissue, mouse heart tissue
Species Specificity: human, mouse, rat, pig	IHC : human ovary tumor tissue, human breast cancer tissue, human liver cancer tissue
Cited Species: human, mouse, rat, pig, canine, chicken, sheep	IF-P : human liver cancer tissue, mouse kidney tissue, human skin cancer tissue
Note-IHC: suggested antigen retrieval with TE buffer pH 9.0; (*) Alternatively, antigen retrieval may be performed with citrate buffer pH 6.0	IF/ICC : A549 cells,

Background Information

Caveolin-1 (CAV1), a multifunctional protein, is the main constituent molecule of caveolae and represents a scaffolding molecule for several signaling molecules including epidermal growth factor receptor (PMID: 19641024). Several studies have implicated that a reduced expression of CAV1 was found in cancers including head and neck carcinoma (PMID: 19002186). However, other studies recognize CAV1 as a tumor promoter because CAV1 is overexpressed in various kinds of cancers, especially in oral cancer (PMID: 20558341). Recent study also show that CAV1 is involved in gastric Cancer (PMID: 25339030).

Notable Publications

Author	Pubmed ID	Journal	Application
Miao Liu	36063979	Life Sci	WB,IP,IF
Kushal Saha	36219473	J Crohns Colitis	WB
Yi Wang	33165443	Int J Clin Exp Pathol	WB

Storage

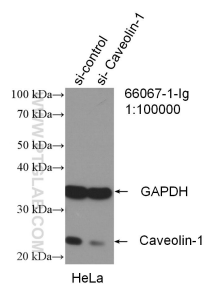
Storage:
Store at -20°C. Stable for one year after shipment.
Storage Buffer:
PBS with 0.02% sodium azide and 50% glycerol, pH7.3
Aliquoting is unnecessary for -20°C storage

*** 20ul sizes contain 0.1% BSA

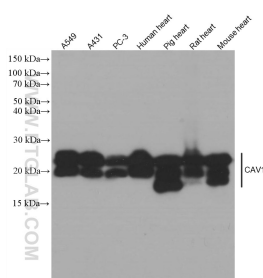
For technical support and original validation data for this product please contact:
T: 1 (888) 4PTGLAB (1-888-478-4522) (toll free in USA), or 1(312) 455-8498 (outside USA)
E: proteintech@ptglab.com
W: ptglab.com

This product is exclusively available under Proteintech Group brand and is not available to purchase from any other manufacturer.

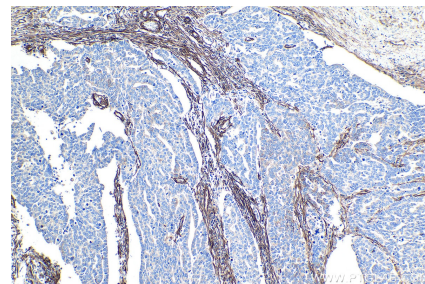
Selected Validation Data



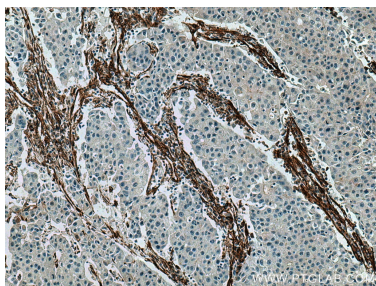
WB result of Caveolin-1 antibody (66067-1-Ig; 1:100000; incubated at room temperature for 1.5 hours) with sh-Control and sh-Caveolin-1 transfected HeLa cells.



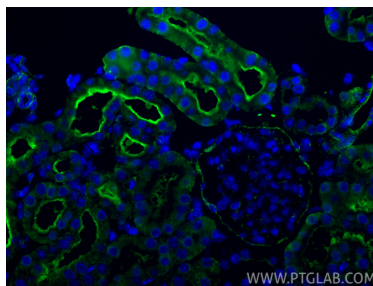
Various lysates were subjected to SDS PAGE followed by western blot with 66067-1-Ig (Caveolin-1 antibody) at dilution of 1:100000 incubated at room temperature for 1.5 hours.



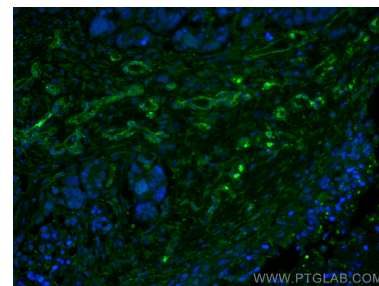
Immunohistochemical analysis of paraffin-embedded human ovary tumor tissue slide using 66067-1-Ig (Caveolin-1 antibody) at dilution of 1:4000 (under 10x lens). Heat mediated antigen retrieval with Tris-EDTA buffer (pH 9.0).



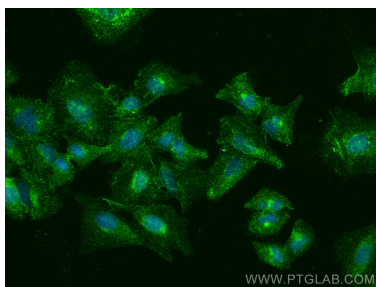
Immunohistochemical analysis of paraffin-embedded human breast cancer tissue slide using 66067-1-Ig (Caveolin-1 antibody) at dilution of 1:5000 (under 10x lens). Heat mediated antigen retrieval with Tris-EDTA buffer (pH 9.0).



Immunofluorescent analysis of (4% PFA) fixed paraffin-embedded mouse kidney tissue using Caveolin-1 antibody (66067-1-Ig, Clone: 6C2B2) at dilution of 1:800 and CoraLite®488-Conjugated Goat Anti-Mouse IgG(H+L) (SA00013-1). Heat mediated antigen retrieval with Tris-EDTA buffer (pH 9.0).



Immunofluorescent analysis of (4% PFA) fixed human liver cancer tissue using Caveolin-1 antibody (66067-1-Ig, Clone: 6C2B2) at dilution of 1:400 and CoraLite®488-Conjugated AffiniPure Goat Anti-Mouse IgG(H+L).



Immunofluorescent analysis of (4% PFA) fixed A549 cells using Caveolin-1 antibody (66067-1-Ig, Clone: 6C2B2) at dilution of 1:400 and CoraLite®488-Conjugated AffiniPure Goat Anti-Mouse IgG(H+L) (SA00013-1).