

For Research Use Only

Caveolin-1 Monoclonal antibody



Catalog Number: 66067-1-Ig

Featured Product

4 Publications

Basic Information

Catalog Number:

66067-1-Ig

Size:

150UL, Concentration: 740 µg/ml by Bradford method using BSA as the standard;

Source:

Mouse

Isotype:

IgG1

Immunogen Catalog Number:

AG8049

GenBank Accession Number:

BC006432

GeneID (NCBI):

857

Full Name:

caveolin 1, caveolae protein, 22kDa

Calculated MW:

22 kDa

Observed MW:

20-25 kDa

Purification Method:

Protein G purification

CloneNo.:

6C2B2

Recommended Dilutions:

WB 1:2000-1:50000

IHC 1:2500-1:10000

Applications

Tested Applications:

IHC, WB, ELISA

Cited Applications:

IF, IHC, WB

Species Specificity:

human, mouse, rat, pig

Cited Species:

human, mouse

Note-IHC: suggested antigen retrieval with TE buffer pH 9.0; (*) Alternatively, antigen retrieval may be performed with citrate buffer pH 6.0

Positive Controls:

WB: A549 cells, HeLa cells

IHC: human breast cancer tissue, human liver cancer tissue

Background Information

Caveolin-1 (CAV1), a multifunctional protein, is the main constituent molecule of caveolae and represents a scaffolding molecule for several signaling molecules including epidermal growth factor receptor (PMID: 19641024). Several studies have implicated that a reduced expression of CAV1 was found in cancers including head and neck carcinoma (PMID: 19002186). However, other studies recognize CAV1 as a tumor promoter because CAV1 is overexpressed in various kinds of cancers, especially in oral cancer (PMID: 20558341). Recent study also show that CAV1 is involved in gastric Cancer (PMID: 25339030).

Notable Publications

Author	Pubmed ID	Journal	Application
Yi Wang	33165443	Int J Clin Exp Pathol	WB
Yu-De Chu	30858354	Cell Death Dis	IHC
Jing Zhang	28590090	Proteomics	WB

Storage

Storage:

Store at -20°C. Stable for one year after shipment.

Storage Buffer:

PBS with 0.02% sodium azide and 50% glycerol pH 7.3.

Aliquoting is unnecessary for -20°C storage

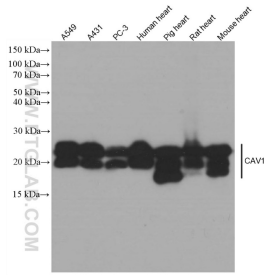
For technical support and original validation data for this product please contact:

T: 1 (888) 4PTGLAB (1-888-478-4522) (toll free in USA), or 1(312) 455-8498 (outside USA)

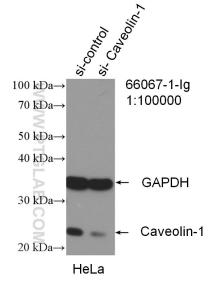
E: proteintech@ptglab.com
W: ptglab.com

This product is exclusively available under Proteintech Group brand and is not available to purchase from any other manufacturer.

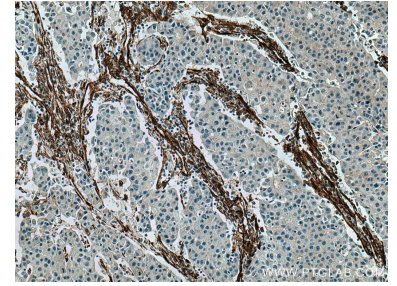
Selected Validation Data



Various lysates were subjected to SDS PAGE followed by western blot with 66067-1-Ig (Caveolin-1 antibody) at dilution of 1:100000 incubated at room temperature for 1.5 hours.



WB result of Caveolin-1 antibody (66067-1-Ig; 1:100000; incubated at room temperature for 1.5 hours) with sh-Control and sh-Caveolin-1 transfected HeLa cells.



Immunohistochemical analysis of paraffin-embedded human breast cancer tissue slide using 66067-1-Ig (Caveolin-1 antibody) at dilution of 1:5000 (under 10x lens). Heat mediated antigen retrieval with Tris-EDTA buffer (pH 9.0).