

For Research Use Only

# APOH Monoclonal antibody

Catalog Number: 66074-1-Ig **5 Publications**



## Basic Information

<b>Catalog Number:</b> 66074-1-Ig	<b>GenBank Accession Number:</b> BC026283	<b>Purification Method:</b> Protein G purification
<b>Size:</b> 150ul , Concentration: 1000 ug/ml by Nanodrop;	<b>GeneID (NCBI):</b> UNIPROT ID: P02749	<b>CloneNo.:</b> 4D9A4
<b>Source:</b> Mouse	<b>Full Name:</b> apolipoprotein H (beta-2-glycoprotein I)	<b>Recommended Dilutions:</b> WB 1:5000-1:50000 IHC 1:100-1:800 IF-P 1:200-1:800 IF/ICC 1:400-1:1600
<b>Isotype:</b> IgG1	<b>Calculated MW:</b> 345 aa, 38 kDa	
<b>Immunogen Catalog Number:</b> AG17915	<b>Observed MW:</b> 50-53 kDa	

## Applications

**Tested Applications:**  
WB, IHC, IF/ICC, IF-P, ELISA

**Cited Applications:**  
WB, Neutralization

**Species Specificity:**  
human, mouse, rat, pig

**Cited Species:**  
human, mouse

**Note-IHC: suggested antigen retrieval with TE buffer pH 9.0; (\*) Alternatively, antigen retrieval may be performed with citrate buffer pH 6.0**

**Positive Controls:**

**WB :** human plasma, human testis tissue, pig plasma, human heart tissue, pig heart tissue, rabbit heart tissue, rat heart tissue, mouse heart tissue, rabbit brain tissue, rat brain tissue, mouse brain tissue

**IHC :** human liver cancer tissue, human colon cancer tissue, human liver tissue

**IF-P :** human liver cancer tissue,

**IF/ICC :** HepG2 cells,

## Background Information

Apolipoprotein H (ApoH), also known as beta2-glycoprotein I (B2-GPI), is a plasma glycoprotein, primarily synthesized in the liver. It has an important function in blood coagulation and clearance of apoptotic bodies from the circulation. ApoH is also an important actor of host innate immune response through its capacity to bind with high affinity to a large panel of pathogens or their proteins.

## Notable Publications

Author	Pubmed ID	Journal	Application
Liang Tang	25081279	J Thromb Haemost	WB
Xiao-Ping Zhang	30074200	Curr Med Sci	WB
Xiang He	39353906	Cell Death Dis	WB

## Storage

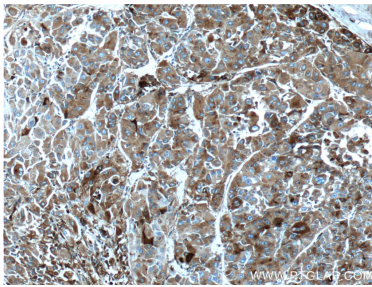
**Storage:**  
Store at -20°C. Stable for one year after shipment.  
**Storage Buffer:**  
PBS with 0.02% sodium azide and 50% glycerol pH 7.3.  
Aliquoting is unnecessary for -20°C storage

\*\*\* 20ul sizes contain 0.1% BSA

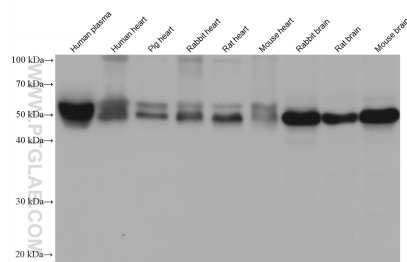
For technical support and original validation data for this product please contact:  
T: 1 (888) 4PTGLAB (1-888-478-4522) (toll free in USA), or 1(312) 455-8498 (outside USA)  
E: proteintech@ptglab.com  
W: ptglab.com

This product is exclusively available under Proteintech Group brand and is not available to purchase from any other manufacturer.

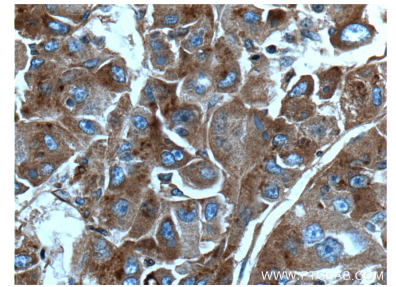
## Selected Validation Data



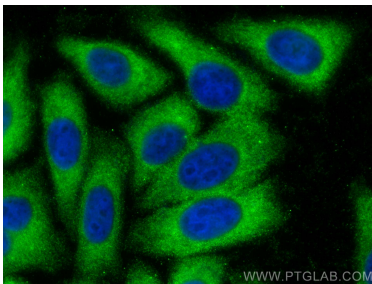
Immunohistochemical analysis of paraffin-embedded human liver cancer tissue slide using 66074-1-Ig (Apolipoprotein H antibody) at dilution of 1:400 (under 10x lens. Heat mediated antigen retrieval with Tris-EDTA buffer (pH 9.0).



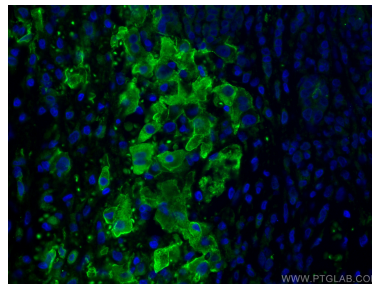
Various lysates were subjected to SDS PAGE followed by western blot with 66074-1-Ig (Apolipoprotein H antibody) at dilution of 1:10000 incubated at room temperature for 1.5 hours.



Immunohistochemical analysis of paraffin-embedded human liver cancer tissue slide using 66074-1-Ig (Apolipoprotein H antibody) at dilution of 1:400 (under 40x lens. Heat mediated antigen retrieval with Tris-EDTA buffer (pH 9.0).



Immunofluorescent analysis of (-20°C Ethanol) fixed HepG2 cells using Apolipoprotein H antibody (66074-1-Ig, Clone: 4D9A4) at dilution of 1:800 and CoraLite®488-Conjugated AffiniPure Goat Anti-Mouse IgG(H+L).



Immunofluorescent analysis of (4% PFA) fixed human liver cancer tissue using Apolipoprotein H antibody (66074-1-Ig, Clone: 4D9A4) at dilution of 1:400 and CoraLite®488-Conjugated AffiniPure Goat Anti-Mouse IgG(H+L).