

For Research Use Only

CISD2-Specific Monoclonal antibody



Catalog Number: 66082-1-Ig

Featured Product

1 Publications

Basic Information

Catalog Number: 66082-1-Ig	GenBank Accession Number: NM_001008388	Purification Method: Protein A purification
Size: 150ul, Concentration: 1653 µg/ml by Bradford method using BSA as the standard;	GeneID (NCBI): 493856	CloneNo.: 3D7A3
Source: Mouse	Full Name: CDGSH iron sulfur domain 2	Recommended Dilutions: WB 1:2000-1:16000 IHC 1:20-1:200 IF 1:50-1:500
Isotype: IgG2b	Observed MW: 15 kDa	

Applications

Tested Applications:

IF, IHC, WB, ELISA

Cited Applications:

WB

Species Specificity:

human, zebrafish, rat, mouse

Cited Species:

human

Note-IHC: suggested antigen retrieval with TE buffer pH 9.0; (*) Alternatively, antigen retrieval may be performed with citrate buffer pH 6.0

Positive Controls:

WB: fetal human brain tissue, MCF-7 cells, HeLa cells, ROS1728 cells, RAW 264.7 cells, zebrafish tissue

IHC: human kidney tissue, human testis tissue

IF: MCF-7 cells,

Background Information

CISD2 gene encodes a 15 kDa CDGSH iron-sulfur domain-containing protein 2, which is also named Miner1 or NAF-1, this protein was reported on endoplasmic reticulum membrane or mitochondrion outer membrane. Defects in CISD2 are the cause of Wolfram syndrome type 2 (WFS2), a rare disorder characterized by juvenile-onset insulin-dependent diabetes mellitus with optic atrophy. CISD2 regulates autophagy program by interacting BCL2, contributing to antagonize BECN1-mediated cellular autophagy at the endoplasmic reticulum. This monoclonal antibody is specific to CISD2 and does not cross-react with CISD1.

Notable Publications

Author	Pubmed ID	Journal	Application
Yu-Wen Hung	37217939	J Biomed Sci	WB

Storage

Storage:

Store at -20°C. Stable for one year after shipment.

Storage Buffer:

PBS with 0.02% sodium azide and 50% glycerol pH 7.3.

Aliquoting is unnecessary for -20°C storage

*** 20ul sizes contain 0.1% BSA

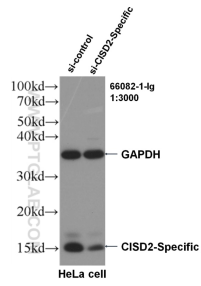
For technical support and original validation data for this product please contact:

T: 1 (888) 4PTGLAB (1-888-478-4522) (toll free in USA), or 1(312) 455-8498 (outside USA)

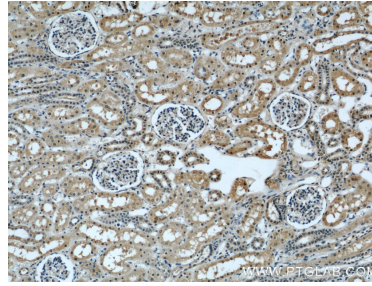
E: proteintech@ptglab.com
W: ptglab.com

This product is exclusively available under Proteintech Group brand and is not available to purchase from any other manufacturer.

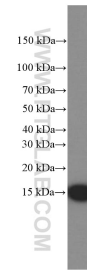
Selected Validation Data



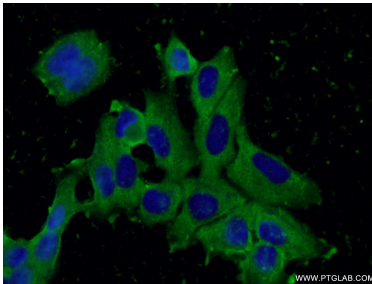
WB result of CISD2 antibody (66082-1-Ig, 1:3000) with si-Control and si-CISD2 transfected HeLa cells.



Immunohistochemical analysis of paraffin-embedded human kidney using 66082-1-Ig(CISD2-Specific antibody) at dilution of 1:50 (under 10x lens).



fetal human brain tissue were subjected to SDS PAGE followed by western blot with 66082-1-Ig (CISD2-Specific Antibody) at dilution of 1:8000 incubated at room temperature for 1.5 hours.



Immunofluorescent analysis of (-20°C Ethanol) fixed MCF-7 cells using 66082-1-Ig(CISD2-Specific antibody) at dilution of 1:100 and Alexa Fluor 488-conjugated AffiniPure Goat Anti-Mouse IgG(H+L).