

For Research Use Only

TLE3 Monoclonal antibody

Catalog Number: 66083-1-Ig



Basic Information

Catalog Number:

66083-1-Ig

Size:

150ul, Concentration: 675 ug/ml by Nanodrop and 613 ug/ml by Bradford method using BSA as the standard;

Source:

Mouse

Isotype:

IgG1

Immunogen Catalog Number:

AG17906

GenBank Accession Number:

BC015729

GeneID (NCBI):

7090

UNIPROT ID:

Q04726

Full Name:

transducin-like enhancer of split 3 (E(sp1) homolog, Drosophila)

Calculated MW:

772 aa, 83 kDa

Observed MW:

90 kDa

Purification Method:

Protein G purification

CloneNo.:

1D11A8

Recommended Dilutions:

WB: 1:500-1:2000

IP: 0.5-4.0 ug for 1.0-3.0 mg of total protein lysate

IHC: 1:20-1:200

Applications

Tested Applications:

WB, IHC, IP, ELISA

Species Specificity:

human

Note-IHC: suggested antigen retrieval with TE buffer pH 9.0; (*) Alternatively, antigen retrieval may be performed with citrate buffer pH 6.0

Positive Controls:

WB: HEK-293 cells, human brain tissue

IP: HEK-293 cells,

IHC: human breast cancer tissue,

Background Information

TLE3, also named as KIAA1547 and ESG3, belongs to the WD repeat Groucho/TLE family. It is a transcriptional corepressor that binds to a number of transcription factors. It inhibits the transcriptional activation mediated by CTNNB1 and TCF family members in Wnt signaling. The effects of full-length TLE family members may be modulated by association with dominant-negative AES. TLE3 is a member of the transducin-like enhancer of split (TLE) family of proteins that have been implicated in the tumorigenesis and classification of sarcomas. It is a candidate biomarker of response to taxane therapy. (PMID:19309506)

Storage

Storage:

Store at -20°C. Stable for one year after shipment.

Storage Buffer:

PBS with 0.02% sodium azide and 50% glycerol, pH7.3

Aliquoting is unnecessary for -20°C storage

*** 20ul sizes contain 0.1% BSA

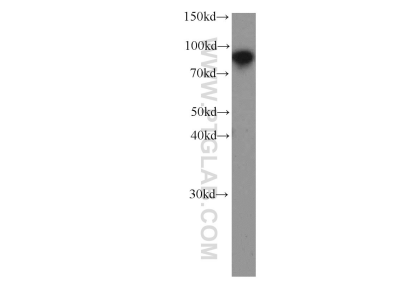
For technical support and original validation data for this product please contact:

T: 1 (888) 4PTGLAB (1-888-478-4522) (toll free in USA), or 1(312) 455-8498 (outside USA)

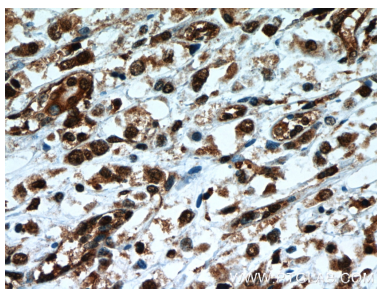
E: proteintech@ptglab.com
W: ptglab.com

This product is exclusively available under Proteintech Group brand and is not available to purchase from any other manufacturer.

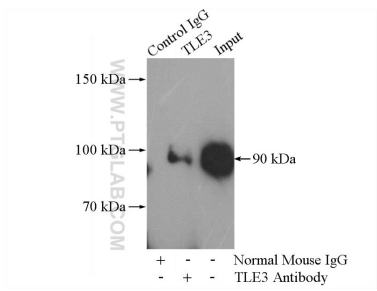
Selected Validation Data



HEK-293 cells were subjected to SDS PAGE followed by western blot with 66083-1-Ig (TLE3 antibody) at dilution of 1:1000 incubated at room temperature for 1.5 hours.



Immunohistochemical analysis of paraffin-embedded human breast cancer slide using 66083-1-Ig (TLE3 Antibody) at dilution of 1:50.



IP result of anti-TLE3 (IP:66083-1-Ig, 5ug; Detection:66083-1-Ig 1:500) with HEK-293 cells lysate 1480ug.