

For Research Use Only

Serum amyloid P component Monoclonal ANTIBODY



Catalog Number: 66084-1-Ig

Basic Information

Catalog Number: 66084-1-Ig	GenBank Accession Number: BC007058	Purification Method: Protein A purification
Size: 150UL, Concentration: 420 µg/ml by Bradford method using BSA as the standard;	GeneID (NCBI): 325	CloneNo.: 1A1D10
Source: Mouse	Full Name: amyloid P component, serum	Recommended Dilutions: WB 1:500-1:2000 IHC 1:20-1:200
Isotype: IgG2b	Calculated MW: 223 aa, 25 kDa	
Immunogen Catalog Number: AG14957	Observed MW: 27 kDa	

Applications

Tested Applications: IHC, WB, ELISA	Positive Controls: WB: Human kidney, tissue IHC: human kidney tissue, human liver tissue
Species Specificity: human	
Note-IHC: suggested antigen retrieval with TE buffer pH 9.0; (*) Alternatively, antigen retrieval may be performed with citrate buffer pH 6.0	

Background Information

Serum amyloid P component (SAP), a member of pentraxin family, is a constitutive serum protein that is synthesized by hepatocytes. It is an acute phase protein, structurally related to C-reactive protein. SAP is a calcium-dependent ligand binding protein, which can interact with DNA and histones and may scavenge nuclear material released from damaged circulating cells.

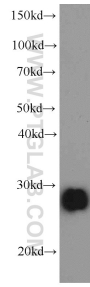
Storage

Storage:
Store at -20°C. Stable for one year after shipment.
Storage Buffer:
PBS with 0.02% sodium azide and 50% glycerol pH 7.3.
Aliquoting is unnecessary for -20°C storage

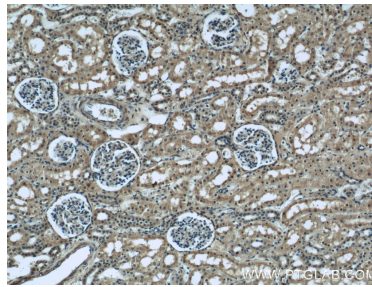
For technical support and original validation data for this product please contact:
T: 1 (888) 4PTGLAB (1-888-478-4522) (toll free in USA), or 1(312) 455-8498 (outside USA)
E: proteintech@ptglab.com
W: ptglab.com

This product is exclusively available under Proteintech Group brand and is not available to purchase from any other manufacturer.

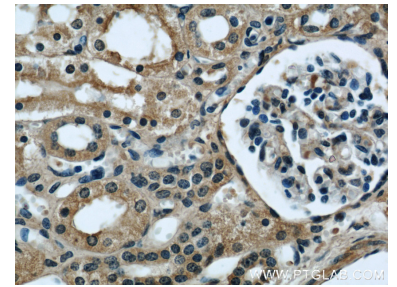
Selected Validation Data



human kidney tissue were subjected to SDS PAGE followed by western blot with 66084-1-Ig (Serum amyloid P component antibody) at dilution of 1:1000 incubated at room temperature for 1.5 hours.



Immunohistochemical analysis of paraffin-embedded human kidney using 66084-1-Ig (Serum amyloid P component antibody) at dilution of 1:50 (under 10x lens).



Immunohistochemical analysis of paraffin-embedded human kidney using 66084-1-Ig (Serum amyloid P component antibody) at dilution of 1:50 (under 40x lens).