

For Research Use Only

MLPH Monoclonal antibody

Catalog Number: 66092-1-Ig **2 Publications**



Basic Information

Catalog Number: 66092-1-Ig	GenBank Accession Number: BC001653	Purification Method: Protein G purification
Size: 150ul , Concentration: 900 ug/ml by Nanodrop and 767 ug/ml by Bradford method using BSA as the standard;	GeneID (NCBI): 79083	CloneNo.: 1A8D12
Source: Mouse	UNIPROT ID: Q9BV36	Recommended Dilutions: WB 1:1000-1:6000 IHC 1:50-1:500 IF/ICC 1:50-1:500
Isotype: IgG1	Full Name: melanophilin	
Immunogen Catalog Number: AG19286	Calculated MW: 66 kDa	
	Observed MW: 66 kDa	

Applications

Tested Applications: WB, IHC, IF/ICC, ELISA	Positive Controls: WB : HEK-293 cells, pig brain tissue, PC-3 cells, Jurkat cells, human brain tissue IHC : human kidney tissue, human skin cancer tissue IF/ICC : HepG2 cells,
Cited Applications: WB, IF	
Species Specificity: human, pig	
Cited Species: human, rat	
Note-IHC: suggested antigen retrieval with TE buffer pH 9.0; (*) Alternatively, antigen retrieval may be performed with citrate buffer pH 6.0	

Background Information

Melanophilin (MLPH) is a member of the exophilin subfamily of Rab effector proteins. MLPH is a modular protein, forming a ternary complex with the small Ras-related GTPase Rab27A in its GTP-bound form and the motor protein myosin Va. It regulates retention of melanosomes at the peripheral actin cytoskeleton of melanocytes, a process essential for normal mammalian pigmentation. Defects in MLPH are a cause of Griscelli syndrome type 3 (GS3), which is characterized by a silver-gray hair color and abnormal pigment distribution in the hair shaft.

Notable Publications

Author	Pubmed ID	Journal	Application
Shuhui Qi	31322203	Mol Med Rep	WB
Wentao Shi	37524274	Int J Biol Macromol	WB,IF

Storage

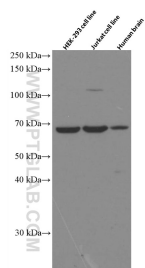
Storage:
Store at -20°C. Stable for one year after shipment.
Storage Buffer:
PBS with 0.02% sodium azide and 50% glycerol, pH7.3
Aliquoting is unnecessary for -20°C storage

*** 20ul sizes contain 0.1% BSA

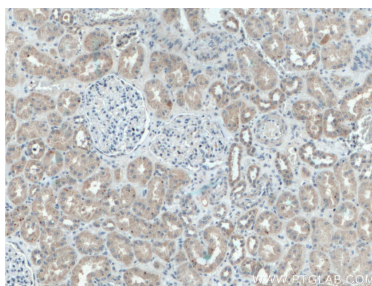
For technical support and original validation data for this product please contact:
T: 1 (888) 4PTGLAB (1-888-478-4522) (toll free in USA), or 1(312) 455-8498 (outside USA)
E: proteintech@ptglab.com
W: ptglab.com

This product is exclusively available under Proteintech Group brand and is not available to purchase from any other manufacturer.

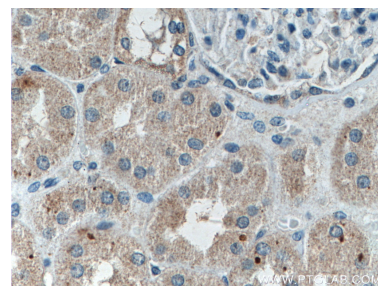
Selected Validation Data



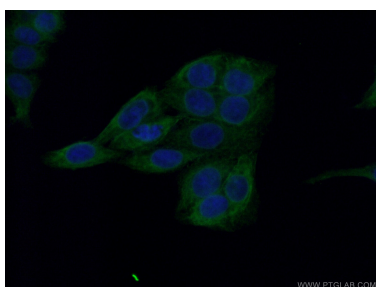
Various lysates were subjected to SDS PAGE followed by western blot with 66092-1-Ig (Melanophilin antibody) at dilution of 1:3000 incubated at room temperature for 1.5 hours.



Immunohistochemical analysis of paraffin-embedded human kidney tissue slide using 66092-1-Ig (Melanophilin antibody) at dilution of 1:200 (under 10x lens).



Immunohistochemical analysis of paraffin-embedded human kidney tissue slide using 66092-1-Ig (Melanophilin antibody) at dilution of 1:200 (under 40x lens).



Immunofluorescent analysis of (-20°C Ethanol) fixed HepG2 cells using 66092-1-Ig (Melanophilin antibody) at dilution of 1:100 and Alexa Fluor 488-Conjugated AffiniPure Goat Anti-Mouse IgG(H+L).