

For Research Use Only

ECHS1 Monoclonal antibody

Catalog Number: 66117-1-Ig

Featured Product

3 Publications



Basic Information

Catalog Number:

66117-1-Ig

GenBank Accession Number:

BC008906

Purification Method:

Protein A purification

Size:

150ul, Concentration: 1207 µg/ml by Bradford method using BSA as the standard;

GeneID (NCBI):

1892

CloneNo.:

2B9D5

Source:

Mouse

Full Name:

enoyl Coenzyme A hydratase, short chain, 1, mitochondrial

Recommended Dilutions:

WB 1:2000-1:20000
IP 0.5-4.0 µg for IP and 1:500-1:2000 for WB
IHC 1:50-1:1000

Isotype:

IgG2b

Calculated MW:

31 kDa

Observed MW:

31 kDa

Immunogen Catalog Number:

AG16775

Applications

Tested Applications:

IHC, IP, WB, ELISA

Positive Controls:

WB: HeLa cells, human testis tissue, PC-3 cells, HepG2 cells

Cited Applications:

WB

IP: HepG2 cells,

Species Specificity:

human

IHC: human prostate cancer tissue, human liver tissue

Cited Species:

human

Note-IHC: suggested antigen retrieval with TE buffer pH 9.0; (*) Alternatively, antigen retrieval may be performed with citrate buffer pH 6.0

Background Information

Enoyl-coenzyme A hydratase (ECHS1) is a mitochondrial protein which catalyzes the hydration of 2-trans-enoyl-coenzyme A intermediates to L-3-hydroxyacyl-coenzyme A, playing key role in metabolism of fatty acids in mitochondria. ECHS1 is highly expressed in muscle, liver and fibroblasts. Altered expression of ECHS1 has been considered as a characteristic feature of mitochondria dysfunction. (23275097, 23235493)

Notable Publications

| Author | Pubmed ID | Journal | Application |
|----------------|-----------|------------------------|-------------|
| Wei-Dong Xu | 25281561 | J Proteomics | WB |
| Tobias B Haack | 26000322 | Ann Clin Transl Neurol | WB |
| Zuyin Li | 33728819 | FEBS Open Bio | WB |

Storage

Storage:

Store at -20°C. Stable for one year after shipment.

Storage Buffer:

PBS with 0.02% sodium azide and 50% glycerol pH 7.3.

Aliquoting is unnecessary for -20°C storage

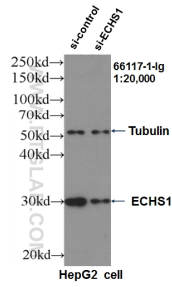
For technical support and original validation data for this product please contact:

T: 1 (888) 4PTGLAB (1-888-478-4522) (toll free in USA), or 1(312) 455-8498 (outside USA)

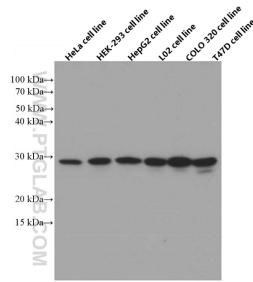
E: proteintech@ptglab.com
W: ptglab.com

This product is exclusively available under Proteintech Group brand and is not available to purchase from any other manufacturer.

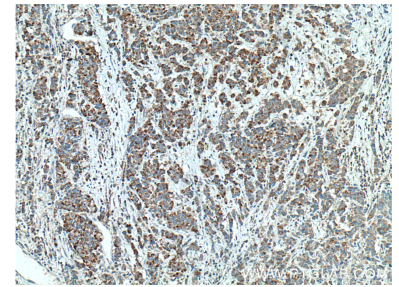
Selected Validation Data



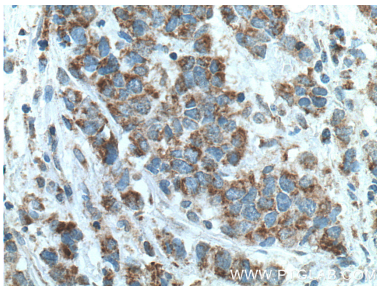
WB result of ECHS1 antibody (66117-1-Ig, 1:20,000) with si-Control and si-ECHS1 transfected HepG2 cells.



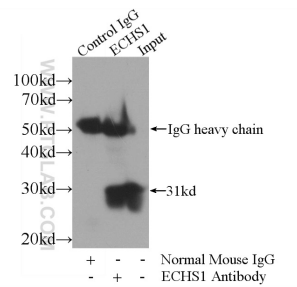
Various cells were subjected to SDS PAGE followed by western blot with 66117-1-Ig (ECHS1 antibody) at dilution of 1:20000 incubated at room temperature for 1.5 hours.



Immunohistochemical analysis of paraffin-embedded human prostate cancer tissue slide using 66117-1-Ig (ECHS1 antibody) at dilution of 1:1000 (under 10x lens. Heat mediated antigen retrieval with Tris-EDTA buffer (pH 9.0).



Immunohistochemical analysis of paraffin-embedded human prostate cancer tissue slide using 66117-1-Ig (ECHS1 antibody) at dilution of 1:1000 (under 40x lens. Heat mediated antigen retrieval with Tris-EDTA buffer (pH 9.0).



IP Result of anti-ECHS1 (IP:66117-1-Ig, 3ug; Detection:66117-1-Ig 1:1000) with HepG2 cells lysate 3600ug.