

For Research Use Only

# Alpha Galactosidase A Monoclonal antibody

Catalog Number: 66121-1-Ig

Featured Product

2 Publications



## Basic Information

Catalog Number:

66121-1-Ig

Size:

150ul, Concentration: 3900 ug/ml by Nanodrop and 2387 ug/ml by Bradford method using BSA as the standard;

Source:

Mouse

Isotype:

IgG2a

Immunogen Catalog Number:

AG7505

GenBank Accession Number:

BC002689

GeneID (NCBI):

2717

UNIPROT ID:

P06280

Full Name:

galactosidase, alpha

Calculated MW:

49 kDa

Observed MW:

49 kDa

Purification Method:

Protein A purification

CloneNo.:

2B2C5

Recommended Dilutions:

WB: 1:3000-1:10000

IHC: 1:20-1:200

IF/ICC: 1:400-1:1600

## Applications

Tested Applications:

WB, IHC, IF/ICC, ELISA

Cited Applications:

WB

Species Specificity:

human

Cited Species:

human

**Note-IHC: suggested antigen retrieval with TE buffer pH 9.0; (\*) Alternatively, antigen retrieval may be performed with citrate buffer pH 6.0**

Positive Controls:

WB: HeLa cells, HEK-293 cells, HepG2 cells, human kidney tissue, LNCaP cells, A431 cells

IHC: human kidney tissue, human liver tissue

IF/ICC: HepG2 cells,

## Background Information

GLA, also named as Melibiase and Alpha-galactosidase A, belongs to the glycosyl hydrolase 27 family. It hydrolyzes terminal, non-reducing alpha-D-galactose residues in alpha-D-galactosides, including galactose oligosaccharides, galactomannans and galactolipids. Fabry disease is an X-linked lysosomal storage disorder resulting from the deficient activity of GLA. Enzyme replacement therapy (ERT) with GLA is currently the most effective therapeutic strategy for patients with Fabry disease, a lysosomal storage disease.

## Notable Publications

Author	Pubmed ID	Journal	Application
Sebastian Boland	36207292	Nat Commun	WB
Chenxu Guo	38328234	bioRxiv	WB

## Storage

Storage:

Store at -20°C. Stable for one year after shipment.

Storage Buffer:

PBS with 0.02% sodium azide and 50% glycerol, pH7.3

Aliquoting is unnecessary for -20°C storage

\*\*\* 20ul sizes contain 0.1% BSA

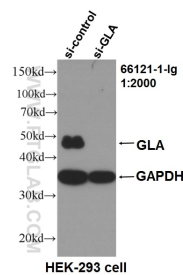
For technical support and original validation data for this product please contact:

T: 1 (888) 4PTGLAB (1-888-478-4522) (toll free in USA), or 1(312) 455-8498 (outside USA)

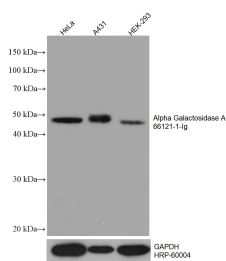
E: [proteintech@ptglab.com](mailto:proteintech@ptglab.com)  
W: [ptglab.com](http://ptglab.com)

This product is exclusively available under Proteintech Group brand and is not available to purchase from any other manufacturer.

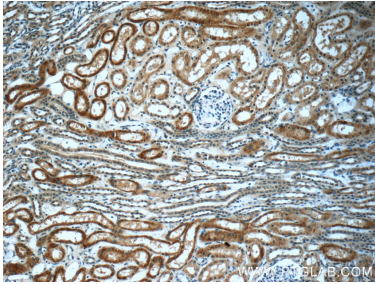
Selected Validation Data



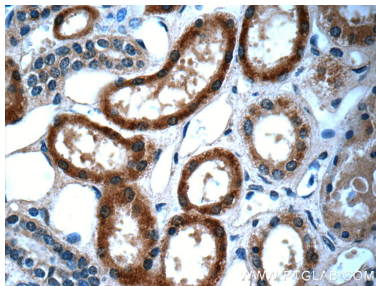
WB result of GLA antibody (66121-1-Ig, 1:2000) with si-Control and si-GLA transfected HEK293 cells..



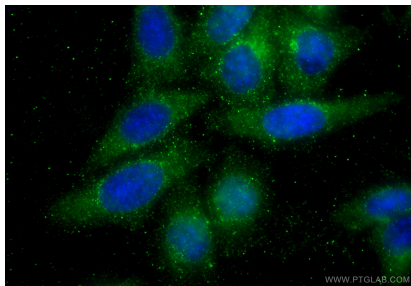
Various lysates were subjected to SDS PAGE followed by western blot with 66121-1-Ig (Alpha galactosidase A antibody) at dilution of 1:20000 incubated at room temperature for 1.5 hours. The membrane was stripped and reblotted with HRP-conjugated GAPDH Monoclonal antibody (HRP-60004) as loading control.



Immunohistochemical analysis of paraffin-embedded human kidney tissue slide using 66121-1-Ig (Alpha galactosidase A antibody at dilution of 1:50 (under 10x lens).



Immunohistochemical analysis of paraffin-embedded human kidney tissue slide using 66121-1-Ig (Alpha galactosidase A antibody at dilution of 1:50 (under 40x lens).



Immunofluorescent analysis of (-20°C Ethanol) fixed HepG2 cells using Alpha Galactosidase A antibody (66121-1-Ig, Clone: 2B2C5 ) at dilution of 1:800 and CoraLite®488-Conjugated Goat Anti-Mouse IgG(H+L) (SA00013-1).