

For Research Use Only

RAC1 Monoclonal antibody

Catalog Number: 66122-1-Ig

Featured Product

41 Publications



Basic Information

Catalog Number:

66122-1-Ig

Size:

150ul, Concentration: 1000 ug/ml by Nanodrop;

Source:

Mouse

Isotype:

IgG2b

Immunogen Catalog Number:

AG17779

GenBank Accession Number:

BC004247

GeneID (NCBI):

5879

UNIPROT ID:

P63000

Full Name:

ras-related C3 botulinum toxin substrate 1 (rho family, small GTP binding protein Rac1)

Calculated MW:

21 kDa

Observed MW:

21 kDa

Purification Method:

Protein A purification

CloneNo.:

4A4B11

Recommended Dilutions:

WB: 1:1000-1:5000

IP: 0.5-4.0 ug for 1.0-3.0 mg of total protein lysate

IHC: 1:50-1:500

IF/ICC: 1:50-1:500

Applications

Tested Applications:

WB, IHC, IF/ICC, IP, ELISA

Cited Applications:

WB, IHC, IF, IP, CoIP, IHC-IF, PLA

Species Specificity:

human, mouse, rat

Cited Species:

human, mouse, rat, pig

Note-IHC: suggested antigen retrieval with TE buffer pH 9.0; (*) Alternatively, antigen retrieval may be performed with citrate buffer pH 6.0

Positive Controls:

WB: HEK-293 cells, human brain tissue, NIH/3T3 cells, HeLa cells, HUVEC cells, HL-60 cells, HSC-T6 cells, RAW 264.7 cells

IP: HL-60 cells, HSC-T6 cells, Raw 264.7 cells, HUVEC cells, HL-60 cells, NIH/3T3 cells

IHC: human colon cancer tissue,

IF/ICC: NIH/3T3 cells, HeLa cells

Background Information

RAC1b, also named as TC25, belongs to the small GTPase superfamily and Rho family. RAC1 is a plasma membrane-associated small GTPase which cycles between active GTP-bound and inactive GDP-bound states. In its active state, it binds to a variety of effector proteins to regulate cellular responses such as secretory processes, phagocytosis of apoptotic cells, epithelial cell polarization and growth-factor induced formation of membrane ruffles.

Notable Publications

Author	Pubmed ID	Journal	Application
Qing Guan	36211372	Front Immunol	IF
Yu-Yuan Zhang	36259516	J Biol Chem	WB
Teng Zhou	25212524	Biomaterials	WB

Storage

Storage:

Store at -20°C. Stable for one year after shipment.

Storage Buffer:

PBS with 0.02% sodium azide and 50% glycerol, pH7.3

Aliquoting is unnecessary for -20°C storage

*** 20ul sizes contain 0.1% BSA

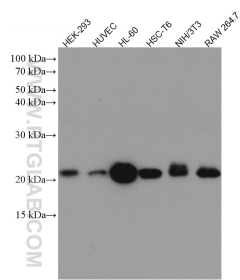
For technical support and original validation data for this product please contact:

T: 1 (888) 4PTGLAB (1-888-478-4522) (toll free in USA), or 1(312) 455-8498 (outside USA)

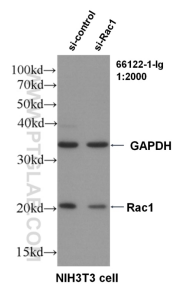
E: proteintech@ptglab.com
W: ptglab.com

This product is exclusively available under Proteintech Group brand and is not available to purchase from any other manufacturer.

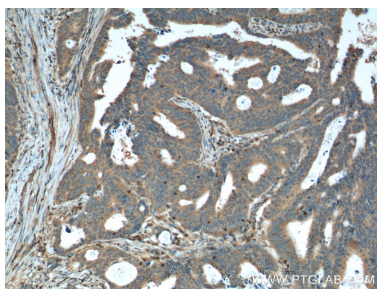
Selected Validation Data



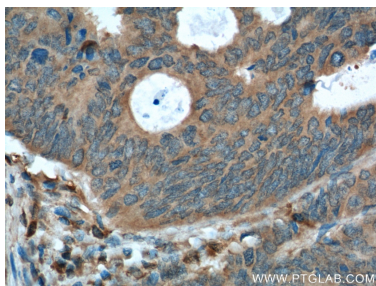
Various lysates were subjected to SDS PAGE followed by western blot with 66122-1-Ig (Rac1 antibody) at dilution of 1:5000 incubated at room temperature for 1.5 hours.



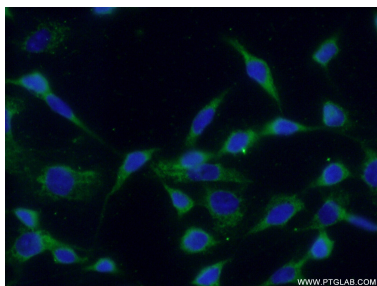
WB result of RAC1 antibody (66122-1-Ig, 1:2000) with si-control and si-RAC1 transfected NIH3T3 cells.



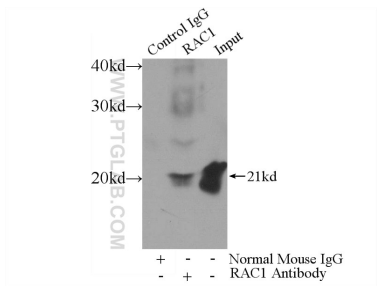
Immunohistochemical analysis of paraffin-embedded human colon cancer tissue slide using 66122-1-Ig (RAC1 Antibody) at dilution of 1:400 (under 10x lens).



Immunohistochemical analysis of paraffin-embedded human colon cancer tissue slide using 66122-1-Ig (RAC1 Antibody) at dilution of 1:400 (under 40x lens).



Immunofluorescent analysis of (-20°C Ethanol) fixed NIH/3T3 cells using 66122-1-Ig(Rac1 antibody) at dilution of 1:100 and Alexa Fluor 488-conjugated Goat Anti-Mouse IgG(H+L).



IP result of anti-RAC1 (IP:66122-1-Ig, 3ug; Detection:66122-1-Ig 1:700) with HL-60 cells lysate 4000ug.