

For Research Use Only

RPL3 Monoclonal antibody

Catalog Number: 66130-1-Ig 5 Publications



Basic Information

Catalog Number: 66130-1-Ig	GenBank Accession Number: BC012786	Purification Method: Protein G purification
Size: 150ul , Concentration: 1300 ug/ml by Nanodrop and 1000 ug/ml by Bradford method using BSA as the standard;	GeneID (NCBI): 6122	CloneNo.: 2G1B8
Source: Mouse	UNIPROT ID: P39023	Recommended Dilutions: WB 1:1000-1:8000 IHC 1:50-1:500 IF/ICC 1:400-1:1600
Isotype: IgG1	Full Name: ribosomal protein L3	
Immunogen Catalog Number: AG20400	Calculated MW: 46/27 kDa	
	Observed MW: 46 kDa	

Applications

Tested Applications: WB, IHC, IF/ICC, ELISA	Positive Controls: WB : RAW 264.7 cells, HEK-293 cells
Cited Applications: WB, IF	IHC : human liver cancer tissue, human breast cancer tissue, human lung cancer tissue, human placenta tissue, human prostate cancer tissue
Species Specificity: human, mouse, rat	IF/ICC : HepG2 cells,
Cited Species: human, mouse	
Note-IHC: suggested antigen retrieval with TE buffer pH 9.0; (*) Alternatively, antigen retrieval may be performed with citrate buffer pH 6.0	

Background Information

Ribosomes, the complexes that catalyze protein synthesis, consist of a small 40S subunit and a large 60S subunit. Together these subunits are composed of 4 RNA species and approximately 80 structurally distinct proteins. RPL3, also named as TARBP-B and MGC104284, belongs to the ribosomal protein L3P family. This protein is a component of the 60S subunit. It can bind to the HIV-1 TAR mRNA, and it has been suggested that the protein contributes to tat-mediated transactivation. As is typical for genes encoding ribosomal proteins, there are multiple processed pseudogenes of this gene dispersed through the genome.

Notable Publications

Author	Pubmed ID	Journal	Application
Hauke S Hillen	34135319	Nat Commun	WB
Eriko Matsuura-Suzuki	35674491	Elife	WB
Pengli Zheng	34912111	Nature	IF

Storage

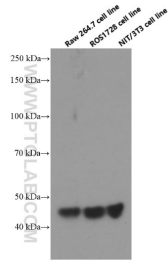
Storage:
Store at -20°C. Stable for one year after shipment.
Storage Buffer:
PBS with 0.02% sodium azide and 50% glycerol, pH7.3
Aliquoting is unnecessary for -20°C storage

*** 20ul sizes contain 0.1% BSA

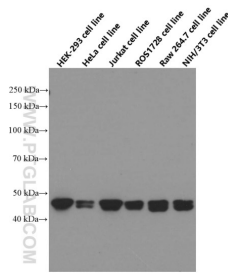
For technical support and original validation data for this product please contact:
T: 1 (888) 4PTGLAB (1-888-478-4522) (toll free in USA), or 1(312) 455-8498 (outside USA)
E: proteintech@ptglab.com
W: ptglab.com

This product is exclusively available under Proteintech Group brand and is not available to purchase from any other manufacturer.

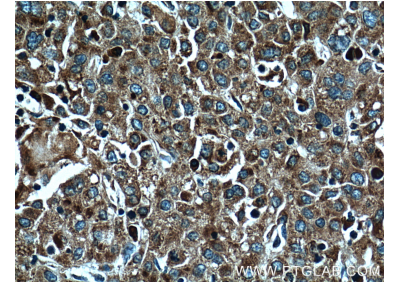
Selected Validation Data



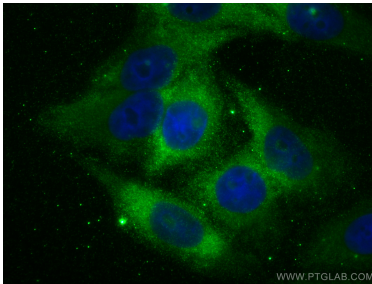
Western blot analysis of RPL3 in various cell lines using Proteintech antibody 66130-1-Ig at dilution of 1:4000 incubated at room temperature for 1.5 hours.



Western blot analysis of RPL3 in various cell lines and tissues using Proteintech antibody 66130-1-Ig at dilution of 1:5000 incubated at room temperature for 1.5 hours.



Immunohistochemical analysis of paraffin-embedded human liver cancer tissue slide using 66130-1-Ig (RPL3 Antibody) at dilution of 1:600 (under 40x lens). Heat mediated antigen retrieval with Tris-EDTA buffer (pH 9.0).



Immunofluorescent analysis of (-20°C Ethanol) fixed HepG2 cells using RPL3 antibody (66130-1-Ig, Clone: 2G1B8) at dilution of 1:800 and CoraLite®488-Conjugated Goat Anti-Mouse IgG(H+L).