

For Research Use Only

Complement factor B Monoclonal ANTIBODY



Catalog Number: 66154-1-Ig

Basic Information

Catalog Number:

66154-1-Ig

Size:

150UL, Concentration: 600 µg/ml by Bradford method using BSA as the standard;

Source:

Mouse

Isotype:

IgM

Immunogen Catalog Number:

AG19107

GenBank Accession Number:

BC007990

GeneID (NCBI):

629

Full Name:

complement factor B

Calculated MW:

86 kDa

Observed MW:

93 kDa

Purification Method:

Antigen affinity purification

CloneNo.:

8D2B6

Recommended Dilutions:

WB 1:500-1:2000

IHC 1:20-1:200

Applications

Tested Applications:

IHC, WB, ELISA

Species Specificity:

human

Note-IHC: suggested antigen retrieval with TE buffer pH 9.0; (*) Alternatively, antigen retrieval may be performed with citrate buffer pH 6.0

Positive Controls:

WB: human blood tissue,

IHC: human liver tissue,

Background Information

Complement factor B (CFB) is a component of the alternative pathway of complement activation. Complement factor B is cleaved into Ba and Bb by factor D in the presence of C3b. The active subunit Bb is a serine protease which associates with C3b to form the alternative pathway C3 convertase. Bb is involved in the proliferation of preactivated B lymphocytes, while Ba inhibits their proliferation.

Storage

Storage:

Store at -20°C. Stable for one year after shipment.

Storage Buffer:

PBS with 0.02% sodium azide and 50% glycerol pH 7.3.

Aliquoting is unnecessary for -20°C storage

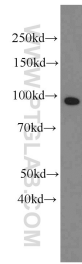
For technical support and original validation data for this product please contact:

T: 1 (888) 4PTGLAB (1-888-478-4522) (toll free in USA), or 1(312) 455-8498 (outside USA)

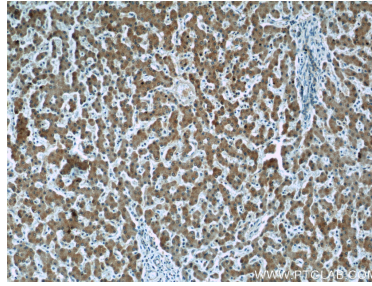
E: proteintech@ptglab.com
W: ptglab.com

This product is exclusively available under Proteintech Group brand and is not available to purchase from any other manufacturer.

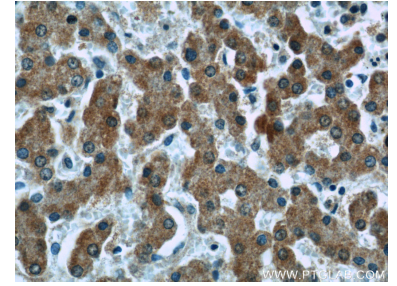
Selected Validation Data



human blood were subjected to SDS PAGE followed by western blot with 66154-1-Ig (Complement factor B antibody) at dilution of 1:1000 incubated at room temperature for 1.5 hours.



Immunohistochemical analysis of paraffin-embedded human liver tissue slide using 66154-1-Ig (Complement factor B antibody at dilution of 1:50 (under 10x lens).



Immunohistochemical analysis of paraffin-embedded human liver tissue slide using 66154-1-Ig (Complement factor B antibody at dilution of 1:50 (under 40x lens).