

For Research Use Only

# C3/C3b/C3c Monoclonal antibody

Catalog Number: 66157-1-Ig **4 Publications**



## Basic Information

<b>Catalog Number:</b> 66157-1-Ig	<b>GenBank Accession Number:</b> BC150179	<b>Purification Method:</b> Protein G purification
<b>Size:</b> 150ul , Concentration: 1000 ug/ml by Nanodrop and 551 ug/ml by Bradford method using BSA as the standard;	<b>GeneID (NCBI):</b> 718	<b>CloneNo.:</b> 2A6B3
<b>Source:</b> Mouse	<b>UNIPROT ID:</b> P01024	<b>Recommended Dilutions:</b> WB: 1:1000-1:8000 IHC: 1:20-1:200 IF/ICC: 1:50-1:500
<b>Isotype:</b> IgG1	<b>Full Name:</b> complement component 3	
<b>Immunogen Catalog Number:</b> AG15955	<b>Calculated MW:</b> 1663 aa, 187 kDa	
	<b>Observed MW:</b> 115 kDa	

## Applications

<b>Tested Applications:</b> WB, IHC, IF/ICC, ELISA	<b>Positive Controls:</b>
<b>Cited Applications:</b> WB, IF, ELISA	<b>WB :</b> HUVEC cells, human blood, human plasma, HepG2 cells, J774A.1 cells, RAW 264.7 cells
<b>Species Specificity:</b> human, mouse	<b>IHC :</b> human liver tissue,
<b>Cited Species:</b> mouse, rat	<b>IF/ICC :</b> HepG2 cells,
<b>Note-IHC: suggested antigen retrieval with TE buffer pH 9.0; (*) Alternatively, antigen retrieval may be performed with citrate buffer pH 6.0</b>	

## Background Information

The complement system is an important effector that bridges the innate and adaptive immune systems (PMID: 20010915). The third component of complement, C3, plays a central role in the activation of the complement system. Its processing by C3 convertase is the central reaction in both classical and alternative complement pathways (PMID: 11414361). Human C3, composed of  $\alpha$  and  $\beta$  chains (115 and 75 kDa, respectively), is cleaved into C3a and C3b by C3 convertase. C3b is further cleaved into iC3b, C3c, C3dg and C3f. This antibody raised against 1314-1663 aa of human C3 protein recognizes the C3 alpha chain, C3b alpha' chain, and C3c alpha' chain fragment 2.

## Notable Publications

Author	Pubmed ID	Journal	Application
Qing Liu	35725619	J Neuroinflammation	WB,IF
Yichun Zou	30579855	Neurochem Int	WB
Feilong Ren	40240339	Int J Oral Sci	IF

## Storage

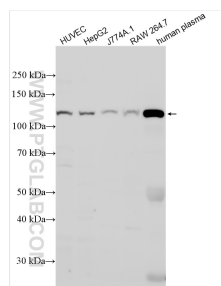
**Storage:**  
Store at -20°C. Stable for one year after shipment.  
**Storage Buffer:**  
PBS with 0.02% sodium azide and 50% glycerol, pH7.3  
Aliquoting is unnecessary for -20°C storage

\*\*\* 20ul sizes contain 0.1% BSA

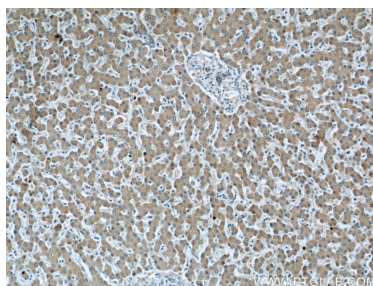
For technical support and original validation data for this product please contact:  
T: 1 (888) 4PTGLAB (1-888-478-4522) (toll free in USA), or 1(312) 455-8498 (outside USA)  
E: proteintech@ptglab.com  
W: ptglab.com

This product is exclusively available under Proteintech Group brand and is not available to purchase from any other manufacturer.

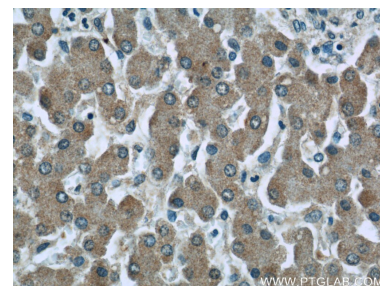
## Selected Validation Data



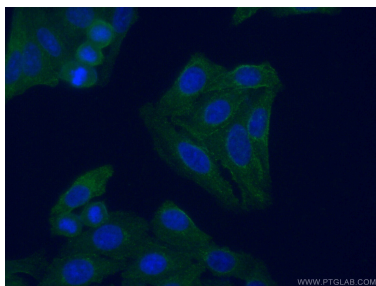
Various lysates were subjected to SDS PAGE followed by western blot with 66157-1-Ig (C3/C3b/C3c antibody) at dilution of 1:4000 incubated at room temperature for 1.5 hours.



Immunohistochemical analysis of paraffin-embedded human liver tissue slide using 66157-1-Ig (C3/C3b/C3c antibody) at dilution of 1:50 (under 10x lens).



Immunohistochemical analysis of paraffin-embedded human liver tissue slide using 66157-1-Ig (C3/C3b/C3c antibody) at dilution of 1:50 (under 40x lens).



Immunofluorescent analysis of (-20°C Ethanol) fixed HepG2 cells using 66157-1-Ig (C3/C3b/C3c antibody) at dilution of 1:100 and Alexa Fluor 488-Conjugated AffiniPure Goat Anti-Mouse IgG(H+L).