

For Research Use Only

HBG1-Specific Monoclonal antibody

Catalog Number: 66168-1-Ig



Basic Information

Catalog Number:

66168-1-Ig

Size:

150UL, Concentration: 1473 µg/ml by 3047

Bradford method using BSA as the standard;

Source:

Mouse

Isotype:

IgG2a

GenBank Accession Number:

NM_000559

GeneID (NCBI):

3047

Full Name:

hemoglobin, gamma A

Calculated MW:

16 kDa

Purification Method:

Protein A purification

CloneNo.:

2A4B5

Recommended Dilutions:

IHC 1:20-1:200

Applications

Tested Applications:

FC, IHC, ELISA

Species Specificity:

human

Note-IHC: suggested antigen retrieval with TE buffer pH 9.0; (*) Alternatively, antigen retrieval may be performed with citrate buffer pH 6.0

Positive Controls:

IHC : human placenta tissue,

Background Information

Storage

Storage:

Store at -20°C. Stable for one year after shipment.

Storage Buffer:

PBS with 0.02% sodium azide and 50% glycerol pH 7.3.

Aliquoting is unnecessary for -20°C storage

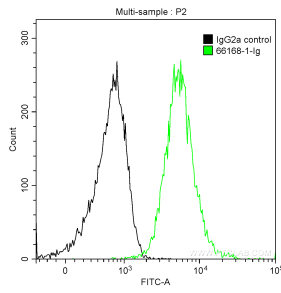
For technical support and original validation data for this product please contact:

T: 1 (888) 4PTGLAB (1-888-478-4522) (toll free in USA), or 1(312) 455-8498 (outside USA)

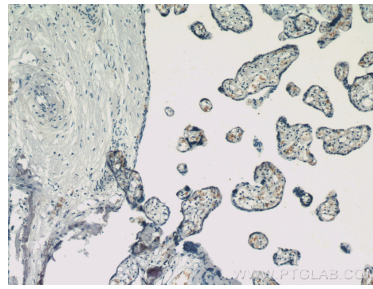
E: proteintech@ptglab.com
W: ptglab.com

This product is exclusively available under Proteintech Group brand and is not available to purchase from any other manufacturer.

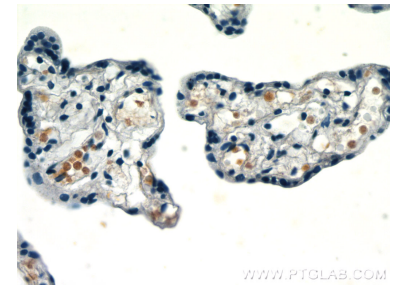
Selected Validation Data



1X10⁶ K-562 cells were intracellularly stained with 0.2 ug Anti-Human HBG1-Specific (66168-1-Ig, Clone:2A4B5) and CoraLite@488-Conjugated AffiniPure Goat Anti-Mouse IgG(H+L) at dilution 1:1000 (green), and 0.2 ug Control Antibody. Cells were fixed with 90% MeOH.



Immunohistochemical analysis of paraffin-embedded human placenta tissue slide using 66168-1-Ig (HBG1-Specific antibody) at dilution of 1:200 (under 10x lens).



Immunohistochemical analysis of paraffin-embedded human placenta tissue slide using 66168-1-Ig (HBG1-Specific antibody) at dilution of 1:200 (under 40x lens).