

For Research Use Only

MSH6 Monoclonal antibody

Catalog Number: 66172-1-Ig

Featured Product

3 Publications



Basic Information

Catalog Number:

66172-1-Ig

GenBank Accession Number:

BC004246

Purification Method:

Protein A purification

Size:

150ul , Concentration: 1027 µg/ml by Bradford method using BSA as the standard;

GeneID (NCBI):

2956

CloneNo.:

2E10B2

Source:

Mouse

Full Name:

mutS homolog 6 (E. coli)

Recommended Dilutions:

WB 1:500-1:2000

IP 0.5-4.0 ug for IP and 1:500-1:1000

for WB

IHC 1:500-1:2000

IF 1:50-1:500

Isotype:

IgG2a

Calculated MW:

153 kDa

Observed MW:

160 kDa

Immunogen Catalog Number:

AG12645

Applications

Tested Applications:

FC, IF, IHC, IP, WB, ELISA

Positive Controls:

WB : HEK-293 cells, HEK-293

Cited Applications:

IHC

IP : HEK-293 cells,

Species Specificity:

human

IHC : human colon cancer tissue,

IF : HepG2 cells,

Cited Species:

human

Note-IHC: suggested antigen retrieval with TE buffer pH 9.0; (*) Alternatively, antigen retrieval may be performed with citrate buffer pH 6.0

Background Information

MSH6, also named as DNA mismatch repair protein Msh6 or GTMBP, is a 1360 amino acid protein, which contains one PWWP domain and belongs to the DNA mismatch repair MutS family. MSH6 localizes in the nucleus and is a component of the post-replicative DNA mismatch repair system. Msh2 and Msh6 form a protein complex required to repair mismatches generated during DNA replication.

Notable Publications

Author	Pubmed ID	Journal	Application
Jun Zhu	32396667	J Surg Oncol	IHC
Dingkong Liang	29352574	Surgery	IHC
Xiangxiang Tao	29085502	Oncol Lett	IHC

Storage

Storage:

Store at -20°C. Stable for one year after shipment.

Storage Buffer:

PBS with 0.02% sodium azide and 50% glycerol pH 7.3.

Aliquoting is unnecessary for -20°C storage

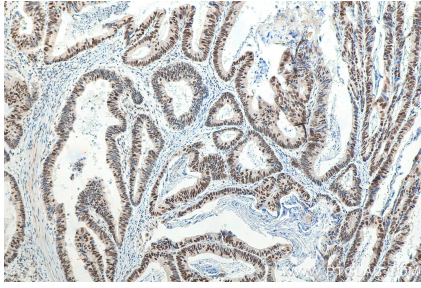
For technical support and original validation data for this product please contact:

T: 1 (888) 4PTGLAB (1-888-478-4522) (toll free in USA), or 1(312) 455-8498 (outside USA)

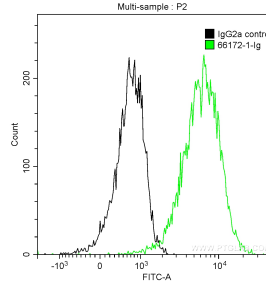
E: proteintech@ptglab.com
W: ptglab.com

This product is exclusively available under Proteintech Group brand and is not available to purchase from any other manufacturer.

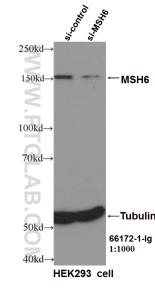
Selected Validation Data



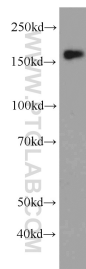
Immunohistochemical analysis of paraffin-embedded human colon cancer tissue slide using 66172-1-Ig (MSH6 antibody) at dilution of 1:1000 (under 10x lens). Heat mediated antigen retrieval with Tris-EDTA buffer (pH 9.0).



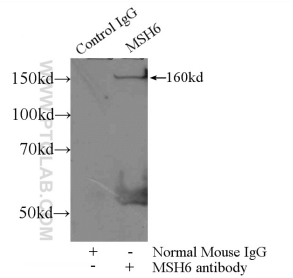
1X10⁶ HEK-293 cells were intracellularly stained with 0.2 ug Anti-Human MSH6 (66172-1-Ig, Clone:2E10B2) and CoraLite®488-Conjugated AffiniPure Goat Anti-Mouse IgG(H+L) at dilution 1:1000 (green), and 0.2 ug Mouse IgG2a Isotype Control (66360-2-Ig, Clone: K11A1B2A2) (black). Cells were fixed with 4% PFA and permeabilized with 0.1% TritonX-100.



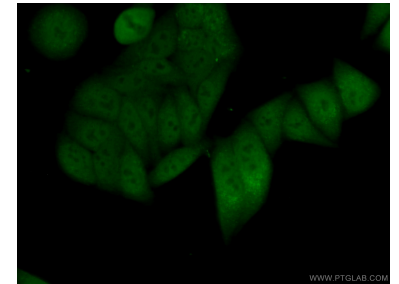
WB result of MSH6 antibody (66172-1-Ig, 1:1000) with si-Control and si-MSH6 transfected HEK293 cells.



HEK-293 cells were subjected to SDS PAGE followed by western blot with 66172-1-Ig (MSH6 Antibody) at dilution of 1:1000 incubated at room temperature for 1.5 hours.



IP Result of anti-MSH6 (IP:66172-1-Ig, 4ug; Detection:66172-1-Ig 1:600) with HEK-293 cells lysate 1800ug.



Immunofluorescent analysis of (10% Formaldehyde) fixed HepG2 cells using 66172-1-Ig (MSH6 antibody) at dilution of 1:50 and Alexa Fluor 488-conjugated AffiniPure Goat Anti-Mouse IgG(H+L).