

LBP

Monoclonal ANTIBODY

Catalog Number: 66181-1-Ig

Basic Information

Catalog Number: 66181-1-Ig	GenBank Accession Number: BC022256	Recommended Dilutions: WB 1:500-1:2000 IHC 1:20-1:200
Size: 150 µg/150 µl	GeneID (NCBI): 3929	
Source: Mouse	Full Name: lipopolysaccharide binding protein	
Isotype: IgG2b	Calculated MW: 481aa, 53 kDa	
Purification Method: Protein A purification	Observed MW: 60 kDa	
Immunogen Catalog Number: AG13485		

Applications

Tested Applications: IHC, WB, ELISA	Positive Controls: WB : Jurkat cells; IHC : human liver cancer tissue; human liver tissue
Species Specificity: human	
Note: suggested antigen retrieval with TE buffer pH 9.0; (*) Alternatively, antigen retrieval may be performed with citrate buffer pH 6.0	

Background Information

LBP (lipopolysaccharide-binding protein) is an acute-phase protein, predominantly synthesized by hepatocytes. It is present in normal serum at concentrations of 5 to 10 µg/ml, rising up to 200 µg/ml 24 h after induction of an acute-phase response. LBP binds to the lipid A moiety of bacterial lipopolysaccharides (LPS), a glycolipid present in the outer membrane of all Gram-negative bacteria, and acts as an affinity enhancer for CD14, facilitating its association with LPS. (PMD: 9665271; 11598069)

Notable Publications

Author	Pubmed ID	Journal	Application

Storage

Storage:
Store at -20°C. Stable for one year after shipment.
Storage Buffer:
PBS with 0.02% sodium azide and 50% glycerol pH 7.3.
Aliquoting is unnecessary for -20°C storage

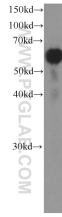
For technical support and original validation data for this product please contact:

T: 1 (888) 4PTGLAB (1-888-478-4522) (toll free in USA), or 1(312) 455-8498 (outside USA)

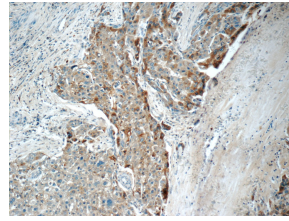
E: proteintech@ptglab.com
W: ptglab.com

This product is exclusively available under Proteintech Group brand and is not available to purchase from any other manufacturer.

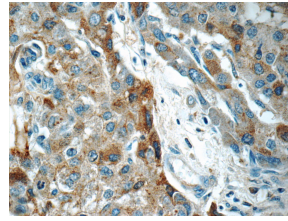
Selected Validation Data



Jurkat cells were subjected to SDS PAGE followed by western blot with 66181-1-Ig(LBP Antibody) at dilution of 1:1000 incubated at room temperature for 1.5 hours



Immunohistochemistry of paraffin-embedded human liver cancer tissue slide using 66181-1-Ig(LBP Antibody) at dilution of 1:50 (under 10x lens)



Immunohistochemistry of paraffin-embedded human liver cancer tissue slide using 66181-1-Ig(LBP Antibody) at dilution of 1:50 (under 40x lens)