

# ERK1/2 Monoclonal ANTIBODY

Catalog Number: 66192-1-Ig

9 Publications

## Basic Information

**Catalog Number:**  
66192-1-Ig

**Size:**  
186 µg/150 µl

**Source:**  
Mouse

**Isotype:**  
IgG1

**Purification Method:**  
Protein G purification

**Immunogen Catalog Number:**  
AG20350

**GenBank Accession Number:**  
BC013992

**GeneID (NCBI):**  
5595

**Full Name:**  
mitogen-activated protein kinase 3

**Calculated MW:**  
44 kDa

**Observed MW:**  
38-44 kDa

**Recommended Dilutions:**

WB 1:2000-1:10000

IHC 1:2000-1:6000

IF 1:20-1:200

## Applications

**Tested Applications:**

IF, IHC, WB, ELISA

**Cited Applications:**

WB

**Species Specificity:**

human, mouse

**Cited Species:**

human, mouse

**Note-IHC: suggested antigen retrieval with  
TE buffer pH 9.0; (\*) Alternatively, antigen  
retrieval may be performed with citrate  
buffer pH 6.0**

**Positive Controls:**

**WB** : HeLa cells; HepG2 cells, MCF-7 cells, HEK-293 cells, Jurkat cells, HSC-T6 cells, NIH/3T3 cells

**IHC** : human ovary tumor tissue; human cervical cancer tissue

**IF** : HepG2 cells;

## Background Information

ERK1 and ERK2 belongs to the protein kinase superfamily. It is involved in both the initiation and regulation of meiosis, mitosis, and postmitotic functions in differentiated cells by phosphorylating a number of transcription factors such as ELK-1. ERK1/2 catalyzes the reaction: ATP + a protein = ADP + a phosphoprotein. It is activated by tyrosine phosphorylation in response to insulin and NGF. This antibody can recognize both ERK1 and ERK2 with the molecular mass of 38-44 kDa.

## Notable Publications

Author	Pubmed ID	Journal	Application
Yuan-Yuan Xie	30279163	Diabetes	WB
Giovanni Perconti	28630480	Sci Rep	
Xiaohui Guan	25641499	Stem Cells	WB

## Storage

**Storage:**

Store at -20°C. Stable for one year after shipment.

**Storage Buffer:**

PBS with 0.02% sodium azide and 50% glycerol pH 7.3.

Aliquoting is unnecessary for -20°C storage

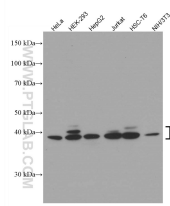
For technical support and original validation data for this product please contact:

T: 1 (888) 4PTGLAB (1-888-478-4522) (toll free in USA), or 1(312) 455-8498 (outside USA)

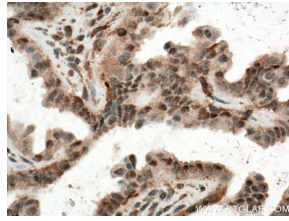
E: proteintech@ptglab.com  
W: ptglab.com

This product is exclusively available under Proteintech Group brand and is not available to purchase from any other manufacturer.

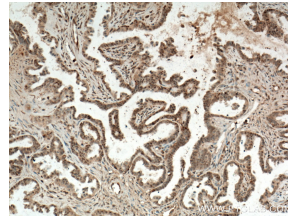
## Selected Validation Data



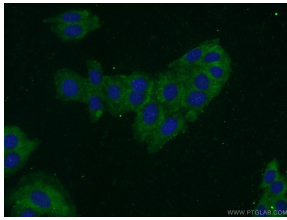
Various lysates were subjected to SDS PAGE followed by western blot with 66192-1-Ig (ERK1/2 antibody) at dilution of 1:10000 incubated at room temperature for 1.5 hours



Immunohistochemical analysis of paraffin-embedded human ovary tumor tissue slide using 66192-1-Ig (ERK1/2 antibody) at dilution of 1:4000 (under 40x lens) heat mediated antigen retrieved with Tris-EDTA buffer(pH9).



Immunohistochemical analysis of paraffin-embedded human ovary tumor tissue slide using 66192-1-Ig (ERK1/2 antibody) at dilution of 1:4000 (under 10x lens) heat mediated antigen retrieved with Tris-EDTA buffer(pH9).



Immunofluorescent analysis of HepG2 cells using 66192-1-Ig(ERK1/2 antibody) at dilution of 1:50 and Alexa Fluor 488-conjugated AffiniPure Goat Anti-Mouse IgG(H+L)