

For Research Use Only

# MTA2 Monoclonal antibody

Catalog Number: 66195-1-Ig

Featured Product

7 Publications



## Basic Information

### Catalog Number:

66195-1-Ig

### Size:

150ul, Concentration: 1900 ug/ml by Nanodrop and 1400 ug/ml by Bradford method using BSA as the standard;

### Source:

Mouse

### Isotype:

IgG2b

### Immunogen Catalog Number:

AG11713

### GenBank Accession Number:

BC053650

### GeneID (NCBI):

9219

### UNIPROT ID:

O94776

### Full Name:

metastasis associated 1 family, member 2

### Calculated MW:

668 aa, 75 kDa

### Observed MW:

75 kDa

### Purification Method:

Protein A purification

### CloneNo.:

2G12G4

### Recommended Dilutions:

WB: 1:5000-1:50000

IHC: 1:500-1:2000

IF/ICC: 1:1000-1:2000

## Applications

### Tested Applications:

WB, IHC, IF/ICC, ELISA

### Cited Applications:

WB, IF, IHC-IF

### Species Specificity:

human, mouse, rat

### Cited Species:

human, mouse

**Note-IHC: suggested antigen retrieval with TE buffer pH 9.0; (\*) Alternatively, antigen retrieval may be performed with citrate buffer pH 6.0**

### Positive Controls:

**WB**: SW480 cells, HeLa cells, HEK-293 cells, HepG2 cells, Jurkat cells, K-562 cells, HSC-T6 cells, NIH/3T3 cells, 4T1 cells

**IHC**: mouse brain tissue, human lung tissue, mouse lung tissue

**IF/ICC**: A431 cells,

## Background Information

Metastasis-associated protein MTA2, also named as MTA1L1 or PID, is a 668 amino acid protein, which contains one BAH domain, one ELM2 domain, one GATA-type zinc finger and one SANT domain. MTA2 localizes in the nucleus and is widely expressed in many tissues. MTA2 may be involved in the regulation of gene expression as repressor and activator.

## Notable Publications

Author	Pubmed ID	Journal	Application
Shanshan Li	33014158	Oncol Lett	WB
Yayuan Zheng	35884488	Cancers (Basel)	WB
Zhu Zeng	31410216	Theranostics	WB,IF

## Storage

### Storage:

Store at -20°C. Stable for one year after shipment.

### Storage Buffer:

PBS with 0.02% sodium azide and 50% glycerol, pH7.3

Aliquoting is unnecessary for -20°C storage

\*\*\* 20ul sizes contain 0.1% BSA

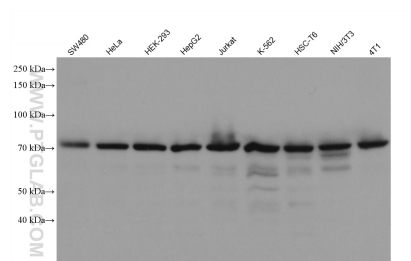
For technical support and original validation data for this product please contact:

T: 1 (888) 4PTGLAB (1-888-478-4522) (toll free in USA), or 1(312) 455-8498 (outside USA)

E: [proteintech@ptglab.com](mailto:proteintech@ptglab.com)  
W: [ptglab.com](http://ptglab.com)

This product is exclusively available under Proteintech Group brand and is not available to purchase from any other manufacturer.

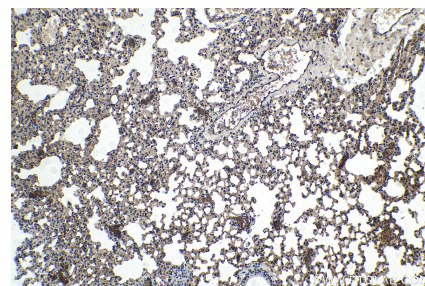
## Selected Validation Data



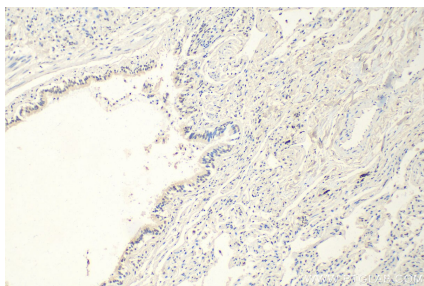
Various lysates were subjected to SDS PAGE followed by western blot with 66195-1-Ig (MTA2 antibody) at dilution of 1:10000 incubated at room temperature for 1.5 hours.



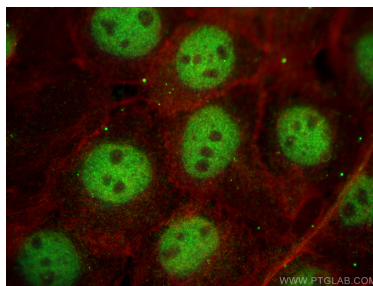
Immunohistochemical analysis of paraffin-embedded mouse brain tissue slide using 66195-1-Ig (MTA2 antibody) at dilution of 1:1000 (under 10x lens). Heat mediated antigen retrieval with Tris-EDTA buffer (pH 9.0).



Immunohistochemical analysis of paraffin-embedded mouse lung tissue slide using 66195-1-Ig (MTA2 antibody) at dilution of 1:4000 (under 10x lens). Heat mediated antigen retrieval with Tris-EDTA buffer (pH 9.0).



Immunohistochemical analysis of paraffin-embedded human lung tissue slide using 66195-1-Ig (MTA2 antibody) at dilution of 1:2000 (under 10x lens). Heat mediated antigen retrieval with Tris-EDTA buffer (pH 9.0).



Immunofluorescent analysis of (4% PFA) fixed A431 cells using MTA2 antibody (66195-1-Ig, Clone: 2G12G4) at dilution of 1:2000 and Multi-rAb Coralite® Plus 488-Goat Anti-Mouse Recombinant Secondary Antibody (H+L) (RGAM002), CL594-Phalloidin (red).