

## CD13 Monoclonal antibody

Catalog Number: 66211-1-Ig 10 Publications

## Basic Information

<b>Catalog Number:</b> 66211-1-Ig	<b>GenBank Accession Number:</b> BC058928	<b>Purification Method:</b> Protein A purification
<b>Size:</b> 150ul , Concentration: 1800 ug/ml by 290 Nanodrop and 1000 ug/ml by Bradford method using BSA as the standard;	<b>GeneID (NCBI):</b> ENSEMBL Gene ID: ENSG00000166825	<b>CloneNo.:</b> 2D8D11
<b>Source:</b> Mouse	<b>UNIPROT ID:</b> P15144	<b>Recommended Dilutions:</b> WB 1:3000-1:8000 IHC 1:5000-1:20000 IF-P 1:200-1:800 IF/ICC 1:400-1:1600
<b>Isotype:</b> IgG2a	<b>Full Name:</b> alanyl (membrane) aminopeptidase	
<b>Immunogen Catalog Number:</b> AG5976	<b>Calculated MW:</b> 110 kDa	
	<b>Observed MW:</b> 150 kDa	

## Applications

<b>Tested Applications:</b> WB, IHC, IF/ICC, IF-P, ELISA	<b>Positive Controls:</b> WB : U-937 cells,
<b>Cited Applications:</b> WB, IHC, IF	<b>IHC :</b> human kidney tissue, human tonsillitis tissue, mouse kidney tissue, rat kidney tissue
<b>Species Specificity:</b> human, mouse, rat	<b>IF-P :</b> mouse kidney tissue, human kidney tissue
<b>Cited Species:</b> human, mouse, rat	<b>IF/ICC :</b> THP-1 cells,

**Note-IHC: suggested antigen retrieval with TE buffer pH 9.0; (\*) Alternatively, antigen retrieval may be performed with citrate buffer pH 6.0**

## Background Information

CD13, also named as APN, ANPEP(aminopeptidase N) or PEPN, is belongs to the peptidase M-1 family. CD13 is a heavily glycosylated, ~150-240 kDa, type-II membrane, expressed by most cells of myeloid origin including monocytes, macrophages, granulocytes, and their hematopoietic precursors. It is also abundantly expressed in the brush border of epithelial cells from renal proximal tubules and small intestine, in prostatic epithelial cells, in bile duct canaliculi, in mast cells, and, in some cases, in fibroblasts and smooth muscle cells. CD13 is a multifunctional protein and plays varying roles in cell migration, cell proliferation, cell differentiation and so on. CD13 participates in angiogenesis generating and modulating angiogenic signals, and can be a marker of angiogenic vessels. CD13 is also a pan-myeloid marker, present on mature granulocytes and monocytes. (PMID: 8805662, 10098327, 18603472, 18097955, 17897790, 17888402, 21339174)

## Notable Publications

Author	Pubmed ID	Journal	Application
Kelly A Servage	32382024	Sci Rep	WB
Junxia Cao	30809310	Theranostics	IHC
Junnian Wei	31792071	Mol Cell Proteomics	WB

## Storage

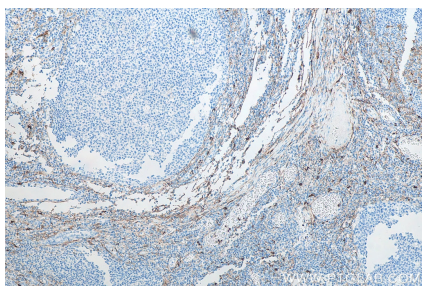
**Storage:**  
Store at -20°C. Stable for one year after shipment.  
**Storage Buffer:**  
PBS with 0.02% sodium azide and 50% glycerol, pH7.3  
 Aliquoting is unnecessary for -20°C storage

\*\*\* 20ul sizes contain 0.1% BSA

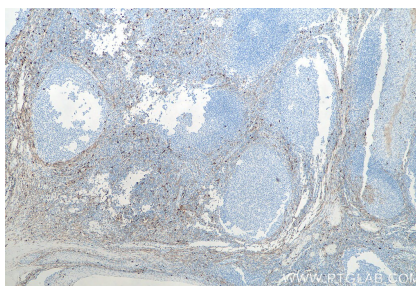
For technical support and original validation data for this product please contact:  
 T: 1 (888) 4PTGLAB (1-888-478-4522) (toll free in USA), or 1(312) 455-8498 (outside USA)  
 E: [proteintech@ptglab.com](mailto:proteintech@ptglab.com)  
 W: [ptglab.com](http://ptglab.com)

This product is exclusively available under Proteintech Group brand and is not available to purchase from any other manufacturer.

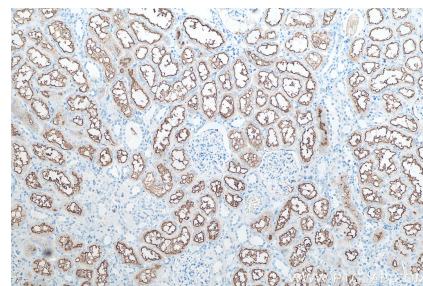
## Selected Validation Data



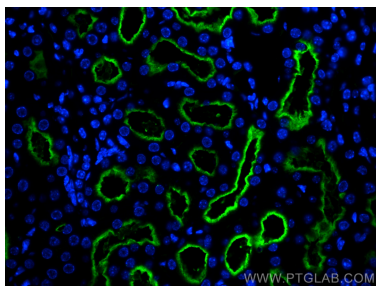
Immunohistochemical analysis of paraffin-embedded human tonsillitis tissue slide using 66211-1-Ig (CD13 antibody) at dilution of 1:10000 (under 10x lens). Heat mediated antigen retrieval with Tris-EDTA buffer (pH 9.0).



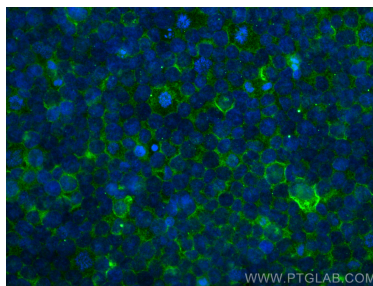
Immunohistochemical analysis of paraffin-embedded human tonsillitis tissue slide using 66211-1-Ig (CD13 antibody) at dilution of 1:10000 (under 4x lens). Heat mediated antigen retrieval with Tris-EDTA buffer (pH 9.0).



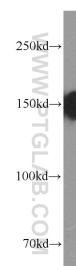
Immunohistochemical analysis of paraffin-embedded human kidney tissue slide using 66211-1-Ig (CD13 antibody) at dilution of 1:10000 (under 10x lens). Heat mediated antigen retrieval with Tris-EDTA buffer (pH 9.0).



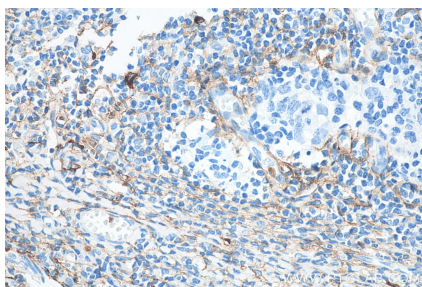
Immunofluorescent analysis of (4% PFA) fixed paraffin-embedded mouse kidney tissue using CD13 antibody (66211-1-Ig, Clone: 2D8D11) at dilution of 1:400 and Coralite®488-Conjugated Goat Anti-Mouse IgG(H+L) (SA00013-1). Heat mediated antigen retrieval with Tris-EDTA buffer (pH 9.0).



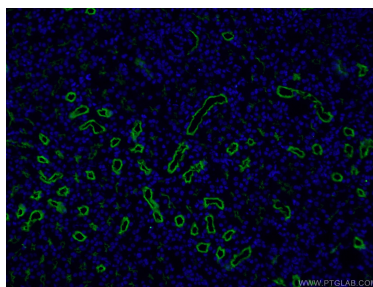
Immunofluorescent analysis of (4% PFA) fixed THP-1 cells using CD13 antibody (66211-1-Ig, Clone: 2D8D11) at dilution of 1:800 and Coralite®488-Conjugated AffiniPure Goat Anti-Mouse IgG(H+L).



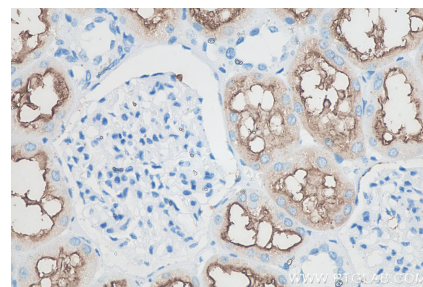
U-937 cells were subjected to SDS PAGE followed by western blot with 66211-1-Ig (CD13 antibody at dilution of 1:4000 incubated at room temperature for 1.5 hours.



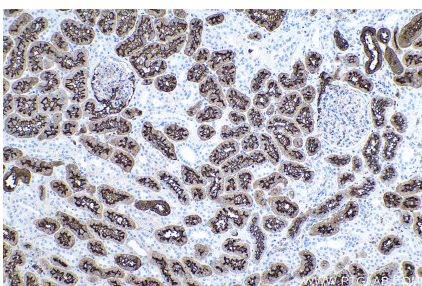
Immunohistochemical analysis of paraffin-embedded human tonsillitis tissue slide using 66211-1-Ig (CD13 antibody) at dilution of 1:10000 (under 40x lens). Heat mediated antigen retrieval with Tris-EDTA buffer (pH 9.0).



Immunofluorescent analysis of (4% PFA) fixed human kidney tissue using 66211-1-Ig (CD13 antibody) at dilution of 1:100 and Alexa Fluor 488-Conjugated AffiniPure Goat Anti-Mouse IgG(H+L).



Immunohistochemical analysis of paraffin-embedded human kidney tissue slide using 66211-1-Ig (CD13 antibody) at dilution of 1:10000 (under 40x lens). Heat mediated antigen retrieval with Tris-EDTA buffer (pH 9.0).



Immunohistochemical analysis of paraffin-embedded human kidney tissue slide using 66211-1-Ig (CD13 antibody) at dilution of 1:10000 (under 10x lens). Heat mediated antigen retrieval with Tris-EDTA buffer (pH 9.0).