

For Research Use Only

# S100A10 Monoclonal antibody

Catalog Number: 66227-1-Ig **2 Publications**



## Basic Information

<b>Catalog Number:</b> 66227-1-Ig	<b>GenBank Accession Number:</b> BC015973	<b>Purification Method:</b> Protein G purification
<b>Size:</b> 150ul , Concentration: 3100 ug/ml by Nanodrop and 1720 ug/ml by Bradford method using BSA as the standard;	<b>GeneID (NCBI):</b> 6281	<b>CloneNo.:</b> 1B3F9
<b>Source:</b> Mouse	<b>UNIPROT ID:</b> P60903	<b>Recommended Dilutions:</b> WB: 1:1000-1:4000 IHC: 1:50-1:500 IF/ICC: 1:200-1:800
<b>Isotype:</b> IgG1	<b>Full Name:</b> S100 calcium binding protein A10	
<b>Immunogen Catalog Number:</b> AG23596	<b>Calculated MW:</b> 11 kDa	
	<b>Observed MW:</b> 11 kDa	

## Applications

<b>Tested Applications:</b> WB, IHC, IF/ICC, ELISA	<b>Positive Controls:</b> WB : human lung tissue, IHC : human colon cancer tissue, human cervical cancer tissue, human liver cancer tissue, human stomach cancer tissue, human pancreas cancer tissue IF/ICC : A431 cells, Saos-2 cells
<b>Cited Applications:</b> IF	
<b>Species Specificity:</b> human	
<b>Cited Species:</b> mouse	
<b>Note-IHC: suggested antigen retrieval with TE buffer pH 9.0; (*) Alternatively, antigen retrieval may be performed with citrate buffer pH 6.0</b>	

## Background Information

S100A10, also known as p11, is a member of the S100 family of small, EF hand containing dimeric proteins. S100 proteins are localized in the cytoplasm and/or nucleus of a wide range of cells, and involved in the regulation of a number of cellular processes such as cell cycle progression and differentiation. S100A10 is present on the surface of endothelial and other cells in a heterotetrameric complex with another Ca(2+)-binding protein, annexin II. S100A10 may function in exocytosis and endocytosis.

## Notable Publications

Author	Pubmed ID	Journal	Application
Min Sun	40271828	Adv Sci (Weinh)	IF
Mingyue Li	38580155	Exp Neurol	IF

## Storage

**Storage:**  
Store at -20°C. Stable for one year after shipment.  
**Storage Buffer:**  
PBS with 0.02% sodium azide and 50% glycerol, pH7.3  
Aliquoting is unnecessary for -20°C storage

\*\*\* 20ul sizes contain 0.1% BSA

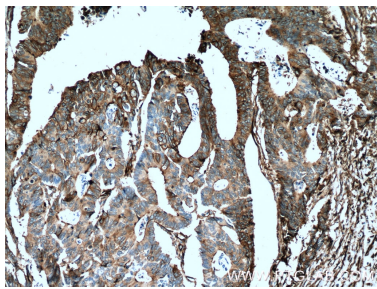
For technical support and original validation data for this product please contact:  
T: 1 (888) 4PTGLAB (1-888-478-4522) (toll free in USA), or 1(312) 455-8498 (outside USA)  
E: proteintech@ptglab.com  
W: ptglab.com

This product is exclusively available under Proteintech Group brand and is not available to purchase from any other manufacturer.

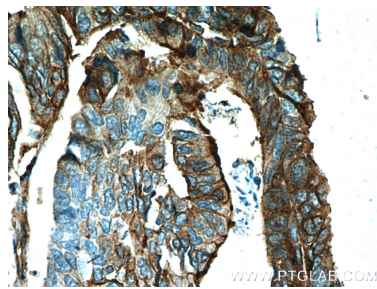
Selected Validation Data



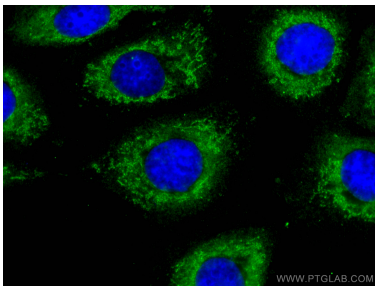
human lung tissue were subjected to SDS PAGE followed by western blot with 66227-1-Ig (S100A10 Antibody) at dilution of 1:2000 incubated at room temperature for 1.5 hours.



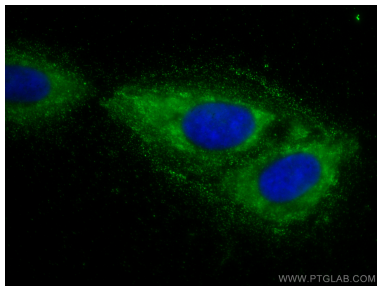
Immunohistochemical analysis of paraffin-embedded human colon cancer tissue slide using 66227-1-Ig (S100A10 Antibody) at dilution of 1:200 (under 10x lens). Heat mediated antigen retrieval with Tris-EDTA buffer (pH 9.0).



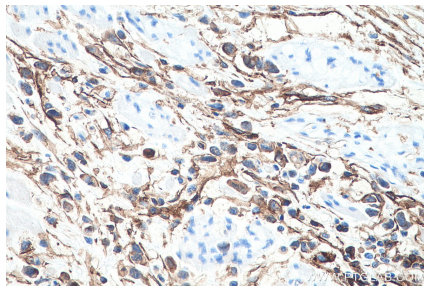
Immunohistochemical analysis of paraffin-embedded human colon cancer tissue slide using 66227-1-Ig (S100A10 Antibody) at dilution of 1:200 (under 40x lens). Heat mediated antigen retrieval with Tris-EDTA buffer (pH 9.0).



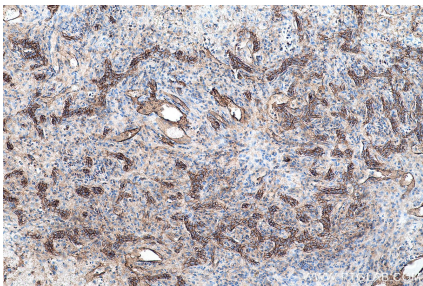
Immunofluorescent analysis of (4% PFA) fixed A431 cells using S100A10 antibody (66227-1-Ig, Clone: 1B3F9 ) at dilution of 1:400 and CoraLite®488-Conjugated Goat Anti-Mouse IgG(H+L).



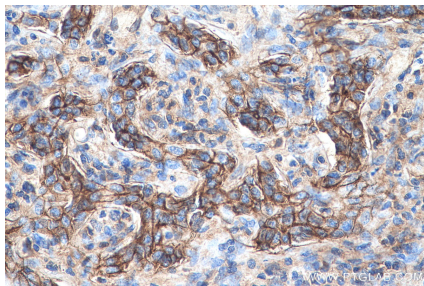
Immunofluorescent analysis of (-20°C Methanol) fixed Saos-2 cells using S100A10 antibody (66227-1-Ig, Clone: 1B3F9 ) at dilution of 1:800 and CoraLite®488-Conjugated Goat Anti-Mouse IgG(H+L).



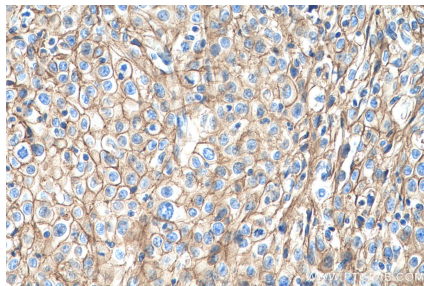
Immunohistochemical analysis of paraffin-embedded human stomach cancer tissue slide using 66227-1-Ig (S100A10 antibody) at dilution of 1:4000 (under 40x lens). Heat mediated antigen retrieval with Tris-EDTA buffer (pH 9.0).



Immunohistochemical analysis of paraffin-embedded human liver cancer tissue slide using 66227-1-Ig (S100A10 antibody) at dilution of 1:4000 (under 10x lens). Heat mediated antigen retrieval with Tris-EDTA buffer (pH 9.0).



Immunohistochemical analysis of paraffin-embedded human liver cancer tissue slide using 66227-1-Ig (S100A10 antibody) at dilution of 1:4000 (under 40x lens). Heat mediated antigen retrieval with Tris-EDTA buffer (pH 9.0).



Immunohistochemical analysis of paraffin-embedded human cervical cancer tissue slide using 66227-1-Ig (S100A10 antibody) at dilution of 1:4000 (under 40x lens). Heat mediated antigen retrieval with Tris-EDTA buffer (pH 9.0).



Immunohistochemical analysis of paraffin-embedded human cervical cancer tissue slide using 66227-1-Ig (S100A10 antibody) at dilution of 1:4000 (under 40x lens). Heat mediated antigen retrieval with Tris-EDTA buffer (pH 9.0).

