

For Research Use Only

14-3-3 Sigma Monoclonal antibody

Catalog Number: 66251-1-Ig **4 Publications**



Basic Information

Catalog Number: 66251-1-Ig	GenBank Accession Number: BC002995	Purification Method: Protein G purification
Size: 150ul , Concentration: 1803 ug/ml by Nanodrop and 1373 ug/ml by Bradford method using BSA as the standard;	GeneID (NCBI): 2810	CloneNo.: 3F10D9
Source: Mouse	UNIPROT ID: P31947	Recommended Dilutions: WB: 1:5000-1:50000 IHC: 1:200-1:8000 IF/ICC: 1:20-1:200
Isotype: IgG1	Full Name: stratifin	
Immunogen Catalog Number: AG12644	Calculated MW: 28 kDa	
	Observed MW: 28-30 kDa	

Applications

Tested Applications: WB, IHC, IF/ICC, ELISA	Positive Controls:
Cited Applications: WB, IHC, IF	WB : A-253 cells, A431 cells, HeLa cells, MCF-7 cells, HT-1376 cells, HaCaT cells, SCaBER cells, MCF-10A cells, MDA-MB-468 cells
Species Specificity: human	IHC : human skin tissue, human breast cancer tissue, human breast hyperplasia tissue, human lung cancer tissue
Cited Species: human, mouse	IF/ICC : MCF-7 cells,
Note-IHC: suggested antigen retrieval with TE buffer pH 9.0; (*) Alternatively, antigen retrieval may be performed with citrate buffer pH 6.0	

Background Information

14-3-3 Sigma is a member 14-3-3 family of highly conserved proteins participating in diverse cellular processes including cell cycle progression. It is exclusively present in various epithelial cells, and alternatively named as human epithelial marker (HEM), or stratifin. Alteration of its expression has been linked to cancer.

Notable Publications

Author	Pubmed ID	Journal	Application
Yoshihiko Kobayashi	32661339	Nat Cell Biol	IF
Xuechao Li	34532265	Transl Androl Urol	IHC
Hua Chen	37956258	Environ Toxicol	IHC

Storage

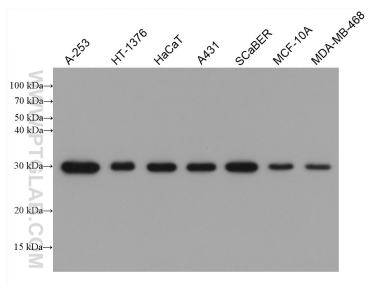
Storage:
Store at -20°C. Stable for one year after shipment.
Storage Buffer:
PBS with 0.02% sodium azide and 50% glycerol, pH7.3
Aliquoting is unnecessary for -20°C storage

*** 20ul sizes contain 0.1% BSA

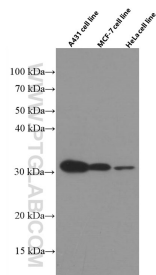
For technical support and original validation data for this product please contact:
T: 1 (888) 4PTGLAB (1-888-478-4522) (toll free in USA), or 1(312) 455-8498 (outside USA)
E: proteintech@ptglab.com
W: ptglab.com

This product is exclusively available under Proteintech Group brand and is not available to purchase from any other manufacturer.

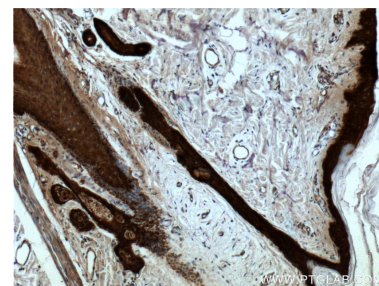
Selected Validation Data



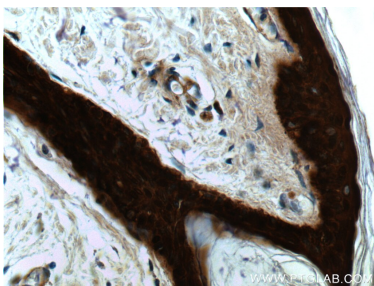
A-253 cells were subjected to SDS PAGE followed by western blot with 66251-1-Ig (14-3-3 Sigma antibody) at dilution of 1:20000 incubated at room temperature for 1.5 hours.



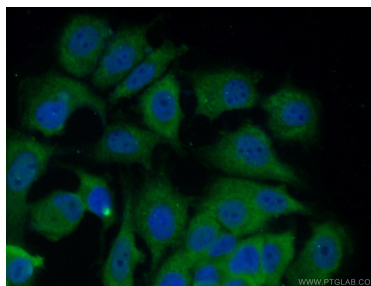
Various cell lysates were subjected to SDS PAGE followed by western blot with 66251-1-Ig (14-3-3 sigma antibody) at dilution of 1:7000 incubated at room temperature for 1.5 hours.



Immunohistochemical analysis of paraffin-embedded human skin tissue slide using 66251-1-Ig (14-3-3 sigma antibody at dilution of 1:2000 (under 10x lens).



Immunohistochemical analysis of paraffin-embedded human skin tissue slide using 66251-1-Ig (14-3-3 sigma antibody at dilution of 1:2000 (under 40x lens).



Immunofluorescent analysis of MCF-7 cells using 66251-1-Ig (14-3-3 sigma antibody) at dilution of 1:100 and Alexa Fluor 488-conjugated AffiniPure Goat Anti-Mouse IgG (H+L).