

For Research Use Only

# KGA-Specific Monoclonal antibody

Catalog Number: 66265-2-Ig **1 Publications**



## Basic Information

Catalog Number: 66265-2-Ig	GenBank Accession Number: BC038507	Purification Method: Protein G purification
Size: 150ul , Concentration: 1400 ug/ml by 2744 Nanodrop and 1000 ug/ml by Bradford method using BSA as the standard;	GeneID (NCBI): 2744	CloneNo.: 1B11A11
Source: Mouse	UNIPROT ID: O94925	Recommended Dilutions: WB: 1:5000-1:50000 IHC: 1:1000-1:4000 IF-P: 1:200-1:800 IF/ICC: 1:200-1:800
Isotype: IgG1	Full Name: glutaminase	
Immunogen Catalog Number: AG24227	Calculated MW: 669 aa, 73 kDa	
	Observed MW: 65 kDa	

## Applications

Tested Applications: WB, IHC, IF/ICC, IF-P, ELISA	Positive Controls:
Cited Applications: WB, IF	WB : mouse brain tissue, HEK-293 cells, COLO 320 cells, HSC-T6 cells, NIH/3T3 cells
Species Specificity: human, mouse, rat	IHC : mouse brain tissue,
Cited Species: human	IF-P : mouse brain tissue,
	IF/ICC : A549 cells,
<b>Note-IHC: suggested antigen retrieval with TE buffer pH 9.0; (*) Alternatively, antigen retrieval may be performed with citrate buffer pH 6.0</b>	

## Background Information

GLS, also named as GLS1 and KIAA0838, belongs to the glutaminase family. It catalyzes the first reaction in the primary pathway for the renal catabolism of glutamine. Glutaminase-, glutamate-, and taurine-immunoreactive neurons develop neurofibrillary tangles in Alzheimer's disease. The glutaminase band in AA/C1 cells is more intense than in HT29 cells, in accordance with measurements of glutaminase activity, and had the same molecular mass of approx. 63 kDa. The bands for both cell lines are clearly different in size from both rat liver glutaminase (58 kDa) and rat kidney glutaminase (65 kDa)(PMID: 12408749). It also reveals a molecular weight of 83-84 kDa as a phosphate-dependent glutaminase(PMID: 447624;7512428). It has 3 isoforms produced by alternative splicing named as KGA, GAM, GAC. This antibody is specific to KGA.

## Notable Publications

Author	Pubmed ID	Journal	Application
Sijia Fang	40204725	Cell Death Discov	WB,IF

## Storage

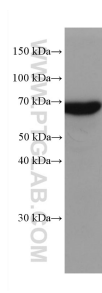
Storage:  
Store at -20°C. Stable for one year after shipment.  
Storage Buffer:  
PBS with 0.02% sodium azide and 50% glycerol, pH7.3  
Aliquoting is unnecessary for -20°C storage

\*\*\* 20ul sizes contain 0.1% BSA

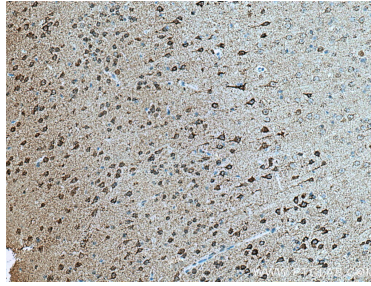
For technical support and original validation data for this product please contact:  
T: 1 (888) 4PTGLAB (1-888-478-4522) (toll free in USA), or 1(312) 455-8498 (outside USA)  
E: proteintech@ptglab.com  
W: ptglab.com

This product is exclusively available under Proteintech Group brand and is not available to purchase from any other manufacturer.

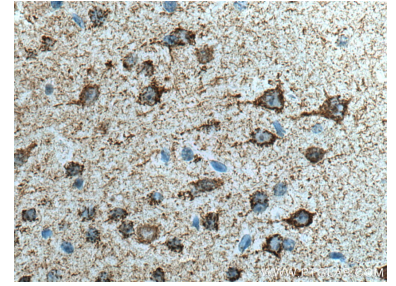
## Selected Validation Data



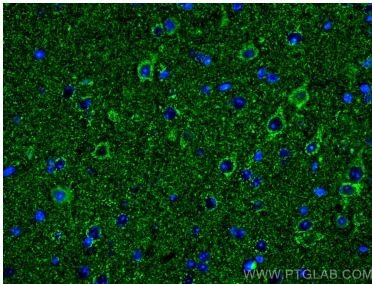
mouse brain tissue were subjected to SDS PAGE followed by western blot with 66265-2-Ig (GLS antibody) at dilution of 1:20000 incubated at room temperature for 1.5 hours.



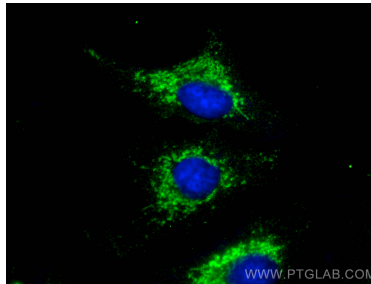
Immunohistochemical analysis of paraffin-embedded mouse brain tissue slide using 66265-2-Ig (GLS antibody) at dilution of 1:2000 (under 10x lens). Heat mediated antigen retrieval with Tris-EDTA buffer (pH 9.0).



Immunohistochemical analysis of paraffin-embedded mouse brain tissue slide using 66265-2-Ig (GLS antibody) at dilution of 1:2000 (under 40x lens). Heat mediated antigen retrieval with Tris-EDTA buffer (pH 9.0).



Immunofluorescent analysis of (4% PFA) fixed mouse brain tissue using KGA-Specific antibody (66265-2-Ig, Clone: 1B11A11 ) at dilution of 1:400 and CoraLite®488-Conjugated Goat Anti-Mouse IgG(H+L).



Immunofluorescent analysis of (-20°C Methanol) fixed A549 cells using KGA-Specific antibody (66265-2-Ig, Clone: 1B11A11 ) at dilution of 1:400 and CoraLite®488-Conjugated Goat Anti-Mouse IgG(H+L) (SA00013-1).