

For Research Use Only

# Mcp1 Monoclonal antibody

Catalog Number: 66272-1-Ig **30 Publications**



## Basic Information

<b>Catalog Number:</b> 66272-1-Ig	<b>GenBank Accession Number:</b> NM-011333	<b>Purification Method:</b> Protein A purification
<b>Size:</b> 150UL, Concentration: 1333 µg/ml by 20296 Bradford method using BSA as the standard;	<b>GeneID (NCBI):</b> 20296	<b>CloneNo.:</b> 1B9F7
<b>Source:</b> Mouse	<b>Full Name:</b> chemokine (C-C motif) ligand 2	<b>Recommended Dilutions:</b> WB 1:1000-1:4000 IHC 1:50-1:500
<b>Isotype:</b> IgG1	<b>Observed MW:</b> 26 kDa	
<b>Immunogen Catalog Number:</b> AG24085		

## Applications

<b>Tested Applications:</b> IHC, WB, ELISA	<b>Positive Controls:</b> WB: DC2.4 cells, LPS treated RAW 264.7 cells, mouse lung tissue, mouse brain tissue IHC: mouse kidney tissue, mouse liver tissue
<b>Cited Applications:</b> IF, IHC, WB	
<b>Species Specificity:</b> mouse	
<b>Cited Species:</b> mouse, rabbit, rat	
<b>Note-IHC: suggested antigen retrieval with TE buffer pH 9.0; (*) Alternatively, antigen retrieval may be performed with citrate buffer pH 6.0</b>	

## Background Information

### Notable Publications

Author	Pubmed ID	Journal	Application
Jianping Wang	28943249	Neuroscience	IF
Qi Wang	33013823	Front Immunol	WB
Bocun Li	32878462	Exp Biol Med (Maywood)	WB,IF

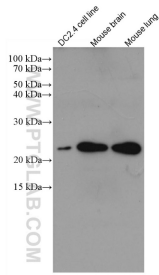
## Storage

**Storage:**  
Store at -20°C. Stable for one year after shipment.  
**Storage Buffer:**  
PBS with 0.02% sodium azide and 50% glycerol pH 7.3.  
Aliquoting is unnecessary for -20°C storage

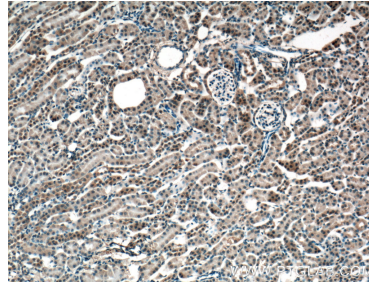
For technical support and original validation data for this product please contact:  
T: 1 (888) 4PTGLAB (1-888-478-4522) (toll free in USA), or 1(312) 455-8498 (outside USA)  
E: proteintech@ptglab.com  
W: ptglab.com

**This product is exclusively available under Proteintech Group brand and is not available to purchase from any other manufacturer.**

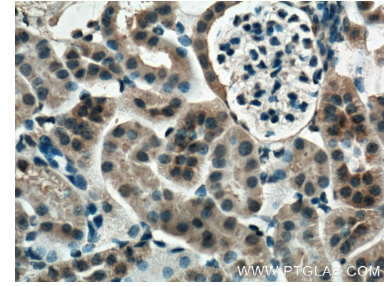
## Selected Validation Data



Various lysates were subjected to SDS PAGE followed by western blot with 66272-1-Ig (Mcp1 antibody) at dilution of 1:2000 incubated at room temperature for 1.5 hours.



Immunohistochemical analysis of paraffin-embedded mouse kidney tissue slide using 66272-1-Ig (Mcp1 Antibody) at dilution of 1:200 (under 10x lens). Heat mediated antigen retrieval with Tris-EDTA buffer (pH 9.0).



Immunohistochemical analysis of paraffin-embedded mouse kidney tissue slide using 66272-1-Ig (Mcp1 Antibody) at dilution of 1:200 (under 40x lens). Heat mediated antigen retrieval with Tris-EDTA buffer (pH 9.0).