

For Research Use Only

# CDK6 Monoclonal antibody

Catalog Number: 66278-1-Ig

Featured Product

4 Publications



## Basic Information

Catalog Number:

66278-1-Ig

Size:

150ul, Concentration: 1000 µg/ml by Bradford method using BSA as the standard;

Source:

Mouse

Isotype:

IgG1

Immunogen Catalog Number:

AG5600

GenBank Accession Number:

BC027989

GeneID (NCBI):

1021

Full Name:

cyclin-dependent kinase 6

Calculated MW:

326 aa, 36 kDa

Observed MW:

36-40 kDa

Purification Method:

Protein A purification

CloneNo.:

4B9C11

Recommended Dilutions:

WB 1:5000-1:50000

IF 1:20-1:200

## Applications

Tested Applications:

IF, WB, ELISA

Cited Applications:

WB

Species Specificity:

human, mouse, rat

Cited Species:

human

Positive Controls:

WB: HEK-293 cells, THP-1 cells, Jurkat cells, NIH/3T3 cells, HeLa cells, ROS1728 cells, C6 cells, Raw 264.7 cells

IF: HeLa cells,

## Background Information

CDK6 (Cyclin-dependent kinase 6) is involved in initiation and maintenance of cell cycle exit during cell differentiation and it prevents cell proliferation and regulates negatively cell differentiation, but is required for the proliferation of specific cell types. The molecular weight of CDK6 is 36-40 kDa (PMID: 23563707, 8114739).

## Notable Publications

Author	Pubmed ID	Journal	Application
Huan Liu	34491469	Med Oncol	WB
Chenxiang Qi	34650666	Oxid Med Cell Longev	WB
Ai-Mei Gao	32240746	Cell Signal	WB

## Storage

Storage:

Store at -20°C. Stable for one year after shipment.

Storage Buffer:

PBS with 0.02% sodium azide and 50% glycerol pH 7.3.

Aliquoting is unnecessary for -20°C storage

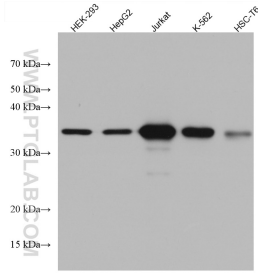
For technical support and original validation data for this product please contact:

T: 1 (888) 4PTGLAB (1-888-478-4522) (toll free in USA), or 1(312) 455-8498 (outside USA)

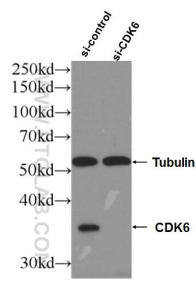
E: [proteintech@ptglab.com](mailto:proteintech@ptglab.com)  
W: [ptglab.com](http://ptglab.com)

This product is exclusively available under Proteintech Group brand and is not available to purchase from any other manufacturer.

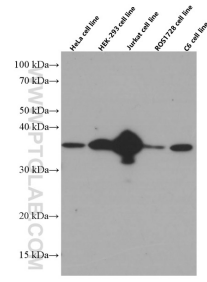
## Selected Validation Data



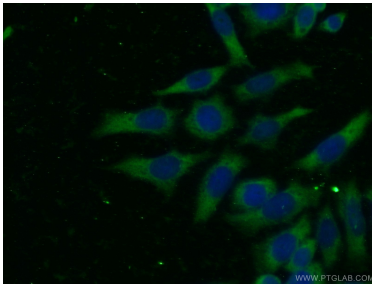
Various lysates were subjected to SDS PAGE followed by western blot with 66278-1-Ig (CDK6 antibody) at dilution of 1:10000 incubated at room temperature for 1.5 hours.



WB result of CDK6 antibody (66278-1-Ig: 1:10000; incubated at room temperature for 1.5 hours) with sh-Control and sh-CDK6 transfected HEK-293 cells.



Various lysates were subjected to SDS PAGE followed by western blot with 66278-1-Ig (CDK6 antibody) at dilution of 1:50000 incubated at room temperature for 1.5 hours.



Immunofluorescent analysis of (-20 Ethanol) fixed HeLa cells using 66278-1-Ig (CDK6 antibody) at dilution of 1:100 and Alexa Fluor 488-conjugated AffiniPure Goat Anti-Mouse IgG(H+L).