

For Research Use Only

IGF1R Monoclonal antibody

Catalog Number: 66283-1-Ig **6 Publications**



Basic Information

Catalog Number: 66283-1-Ig	GenBank Accession Number: NM_000875	Purification Method: Protein A purification
Size: 150ul , Concentration: 1500 ug/ml by Nanodrop and 1000 ug/ml by Bradford method using BSA as the standard;	GeneID (NCBI): 3480	CloneNo.: 3C6A11
Source: Mouse	UNIPROT ID: P08069	Recommended Dilutions: WB 1:1000-1:8000 IHC 1:50-1:500
Isotype: IgG1	Full Name: IGF I receptor	
	Calculated MW: 155 kDa	
	Observed MW: 130-140 kDa	

Applications

Tested Applications: WB, IHC, ELISA	Positive Controls:
Cited Applications: WB, IHC	WB : MCF-7 cells, HepG2 cells, HeLa cells, HUVEC cells, A549 cells, HEK-293 cells, ROS1728 cells, C6 cells
Species Specificity: human, rat	IHC : human breast cancer tissue, human endometrial cancer tissue, human lung cancer tissue
Cited Species: human, mouse, rat	
Note-IHC: suggested antigen retrieval with TE buffer pH 9.0; (*) Alternatively, antigen retrieval may be performed with citrate buffer pH 6.0	

Background Information

IGF1R, also named as CD221, is a receptor tyrosine kinase which mediates actions of INS-like growth factor 1 (IGF1). IGF1R binds IGF1 with high affinity and IGF2 and INS with a lower affinity, the activated IGF1R is involved in cell growth and survival control. It is crucial for tumor transformation and survival of malignant cells. IGF1R is a heterotetrameric receptor, composed of two alpha subunits (130 kDa each) and two beta subunits (~98 kDa each) (PMID: 6279656). Both the alpha and beta subunits are synthesized from a single mRNA precursor. The precursor is then glycosylated, proteolytically cleaved, and crosslinked by cysteine bonds.

Notable Publications

Author	Pubmed ID	Journal	Application
YuanPing Hai	36128805	Thyroid	IHC
Takashi Hara	36130217	Biosci Biotechnol Biochem	WB
Shuai Lian	30423388	Behav Brain Res	WB

Storage

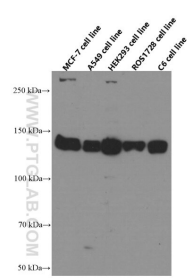
Storage:
Store at -20°C. Stable for one year after shipment.
Storage Buffer:
PBS with 0.02% sodium azide and 50% glycerol pH 7.3.
Aliquoting is unnecessary for -20°C storage

*** 20ul sizes contain 0.1% BSA

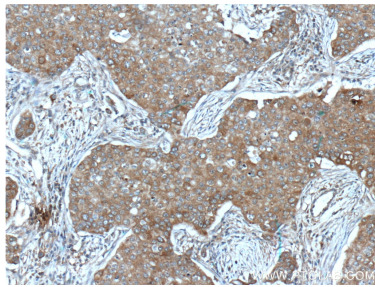
For technical support and original validation data for this product please contact:
T: 1 (888) 4PTGLAB (1-888-478-4522) (toll free in USA), or 1(312) 455-8498 (outside USA)
E: proteintech@ptglab.com
W: ptglab.com

This product is exclusively available under Proteintech Group brand and is not available to purchase from any other manufacturer.

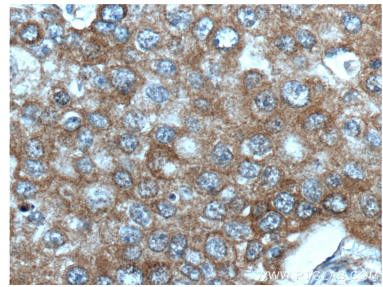
Selected Validation Data



Various lysates were subjected to SDS PAGE followed by western blot with 66283-1-Ig (IGF1R beta chain antibody at dilution of 1:4000 incubated at room temperature for 1.5 hours.



Immunohistochemical analysis of paraffin-embedded human breast cancer tissue slide using 66283-1-Ig (IGF1R beta chain antibody at dilution of 1:200 (under 10x lens). Heat mediated antigen retrieval with Tris-EDTA buffer (pH 9.0).



Immunohistochemical analysis of paraffin-embedded human breast cancer tissue slide using 66283-1-Ig (IGF1R beta chain antibody at dilution of 1:200 (under 40x lens). Heat mediated antigen retrieval with Tris-EDTA buffer (pH 9.0).