

# PR Monoclonal ANTIBODY

Catalog Number: 66300-1-Ig

## Basic Information

<b>Catalog Number:</b> 66300-1-Ig	<b>GenBank Accession Number:</b> NM_000926	<b>Recommended Dilutions:</b> IHC 1:1000-1:5000
<b>Size:</b> 150 µg/150 µl	<b>GeneID (NCBI):</b> 5241	
<b>Source:</b> Mouse	<b>Full Name:</b> progesterone receptor	
<b>Isotype:</b> IgG1	<b>Calculated MW:</b> 933aa, 99 kDa	
<b>Purification Method:</b> Protein G purification	<b>Observed MW:</b>	
<b>Immunogen Catalog Number:</b> AG22992		

## Applications

**Tested Applications:**  
IHC, ELISA

**Species Specificity:**  
human

**Positive Controls:**

IHC : human breast cancer tissue;

**Note: suggested antigen retrieval with TE buffer pH 9.0; (\*) Alternatively, antigen retrieval may be performed with citrate buffer pH 6.0**

## Background Information

PGR, also named as NR3C3 and PR, belongs to the nuclear hormone receptor family and NR3 subfamily. The steroid hormones and their receptors are involved in the regulation of eukaryotic gene expression and affect cellular proliferation and differentiation in target tissues. Progesterone receptor isoform B (PRB) is involved activation of c-SRC/MAPK signaling on hormone stimulation. The ER and PR status has been used as a predictor of breast carcinoma responsiveness to endocrine therapy and as a prognostic indicator for early recurrence.

## Notable Publications

Author	Pubmed ID	Journal	Application

## Storage

**Storage:**  
Store at -20°C. Stable for one year after shipment.

**Storage Buffer:**  
PBS with 0.02% sodium azide and 50% glycerol pH 7.3.

Aliquoting is unnecessary for -20°C storage

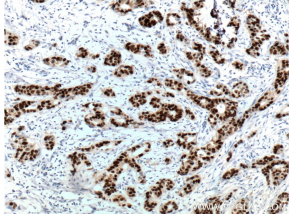
For technical support and original validation data for this product please contact:

T: 1 (888) 4PTGLAB (1-888-478-4522) (toll free in USA), or 1(312) 455-8498 (outside USA)

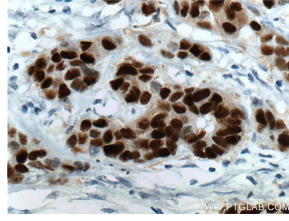
E: [proteintech@ptglab.com](mailto:proteintech@ptglab.com)  
W: [ptglab.com](http://ptglab.com)

This product is exclusively available under Proteintech Group brand and is not available to purchase from any other manufacturer.

## Selected Validation Data



Immunohistochemistry of paraffin-embedded human breast cancer tissue slide using 66300-1-Ig (PR antibody) at dilution of 1:3200 (under 10x lens) heat mediated antigen retrieved with Tris-EDTA buffer(pH9).



Immunohistochemistry of paraffin-embedded human breast cancer tissue slide using 66300-1-Ig (PR antibody) at dilution of 1:3200 (under 40x lens) heat mediated antigen retrieved with Tris-EDTA buffer(pH9).