

For Research Use Only

Vinculin Monoclonal antibody

Catalog Number: 66305-1-Ig **42 Publications**



Basic Information

Catalog Number: 66305-1-Ig	GenBank Accession Number: BC039174	Purification Method: Protein A purification
Size: 150ul , Concentration: 780 µg/ml by Bradford method using BSA as the standard;	GeneID (NCBI): 7414	CloneNo.: 2B5A7
Source: Mouse	Full Name: vinculin	Recommended Dilutions: WB 1:1000-1:5000 IHC 1:50-1:500 IF 1:50-1:500
Isotype: IgG1	Calculated MW: 1133 aa, 124 kDa	
Immunogen Catalog Number: AG24946	Observed MW: 117 kDa	

Applications

Tested Applications: FC, IF, IHC, WB, ELISA	Positive Controls:
Cited Applications: CoIP, IF, IHC, WB	WB : HeLa cells, pig heart tissue, rat heart tissue, HepG2 cells, PC-3 cells, A2780 cells, SW 1990 cells, NIH/3T3 cells
Species Specificity: human, mouse, rat, pig	IHC : human breast cancer tissue, human prostate cancer tissue
Cited Species: hamster, human, mouse, rat	IF : HeLa cells,
Note-IHC: suggested antigen retrieval with TE buffer pH 9.0; (*) Alternatively, antigen retrieval may be performed with citrate buffer pH 6.0	

Background Information

Vinculin belongs to the vinculin/alpha-catenin family. It is an actin filament (F-actin)-binding protein which involved in cell-matrix adhesion and cell-cell adhesion. Vinculin regulates cell-surface E-cadherin expression and potentiates mechanosensing by the E-cadherin complex. It may also play important roles in cell morphology and locomotion. Vinculin is a 117-kDa, 1,066-amino-acid protein which is ubiquitously expressed. Its splice variant, metavinculin (124 kDa), is muscle-specific.

Notable Publications

Author	Pubmed ID	Journal	Application
Juan M Barajas	34599880	Am J Pathol	WB
Yizhou Zhu	31507175	ACS Appl Mater Interfaces	
Zhenzhen Luo	34509929	Neoplasia	WB

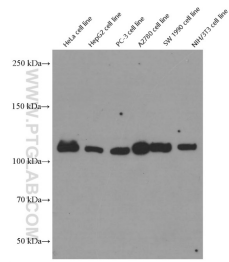
Storage

Storage:
Store at -20°C. Stable for one year after shipment.
Storage Buffer:
PBS with 0.02% sodium azide and 50% glycerol pH 7.3.
Aliquoting is unnecessary for -20°C storage

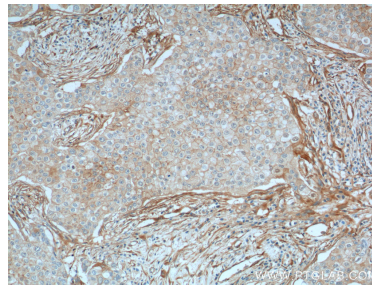
For technical support and original validation data for this product please contact:
T: 1 (888) 4PTGLAB (1-888-478-4522) (toll free in USA), or 1(312) 455-8498 (outside USA)
E: proteintech@ptglab.com
W: ptglab.com

This product is exclusively available under Proteintech Group brand and is not available to purchase from any other manufacturer.

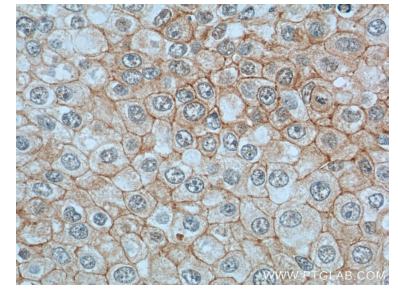
Selected Validation Data



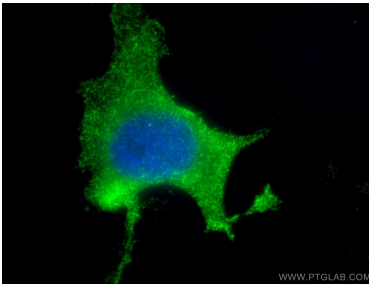
Various lysates were subjected to SDS PAGE followed by western blot with 66305-1-Ig (Vinculin Antibody) at dilution of 1:5000 incubated at room temperature for 1.5 hours.



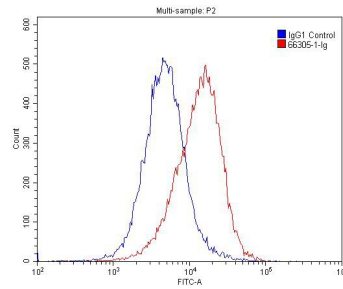
Immunohistochemical analysis of paraffin-embedded human breast cancer tissue slide using 66305-1-Ig (Vinculin Antibody) at dilution of 1:200 (under 10x lens). Heat mediated antigen retrieval with Tris-EDTA buffer (pH 9.0).



Immunohistochemical analysis of paraffin-embedded human breast cancer tissue slide using 66305-1-Ig (Vinculin Antibody) at dilution of 1:200 (under 40x lens). Heat mediated antigen retrieval with Tris-EDTA buffer (pH 9.0).



Immunofluorescent analysis of (10% Formaldehyde) fixed HeLa cells using 66305-1-Ig (Vinculin antibody) at dilution of 1:200 and Alexa Fluor 488-conjugated AffiniPure Goat Anti-Mouse IgG(H+L).



1X10⁶ HeLa cells were stained with 0.2ug Vinculin antibody (66305-1-Ig, red) and control antibody (blue). Fixed with 4% PFA blocked with 3% BSA (30 min). Alexa Fluor 488-conjugated AffiniPure Goat Anti-Mouse IgG(H+L) with dilution 1:1500.