

# TRIM24 Monoclonal antibody

Catalog Number: 66324-1-Ig

## Basic Information

<b>Catalog Number:</b> 66324-1-Ig	<b>GenBank Accession Number:</b> BC028689	<b>Purification Method:</b> Protein G purification
<b>Size:</b> 150ul , Concentration: 1000 ug/ml by Nanodrop and 1000 ug/ml by Bradford method using BSA as the standard;	<b>GeneID (NCBI):</b> 8805	<b>CloneNo.:</b> 1D6D9
<b>Source:</b> Mouse	<b>UNIPROT ID:</b> O15164	<b>Recommended Dilutions:</b> WB 1:2000-1:10000 IHC 1:50-1:500 IF/ICC 1:400-1:1600
<b>Isotype:</b> IgG1	<b>Full Name:</b> tripartite motif-containing 24	
<b>Immunogen Catalog Number:</b> AG5417	<b>Calculated MW:</b> 117 kDa	
	<b>Observed MW:</b> 116 kDa	

## Applications

**Tested Applications:**  
WB, IHC, IF/ICC, ELISA

**Species Specificity:**  
human, mouse, rat

**Note-IHC: suggested antigen retrieval with TE buffer pH 9.0; (\*) Alternatively, antigen retrieval may be performed with citrate buffer pH 6.0**

**Positive Controls:**

**WB :** HeLa cells, HEK-293 cells, MCF-7 cells, Jurkat cells, HSC-T6 cells, NIH/3T3 cells, HepG2 cells

**IHC :** human lung cancer tissue, human breast cancer tissue

**IF/ICC :** HepG2 cells,

## Background Information

TRIM24, also named as RNF82, TIF1 and TIF1A, interacts selectively in vitro with the AF2-activating domain of the estrogen receptors. Association with DNA-bound estrogen receptors, it requires the presence of estradiol. It is a regulation protein of P53. Defects in TRIM24 are a cause of thyroid papillary carcinoma (TPC) which is a common tumor of the thyroid that typically arises as an irregular, solid or cystic mass from otherwise normal thyroid tissue.

## Storage

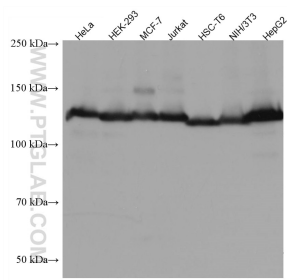
**Storage:**  
Store at -20°C. Stable for one year after shipment.  
**Storage Buffer:**  
PBS with 0.02% sodium azide and 50% glycerol, pH7.3  
Aliquoting is unnecessary for -20°C storage

\*\*\* 20ul sizes contain 0.1% BSA

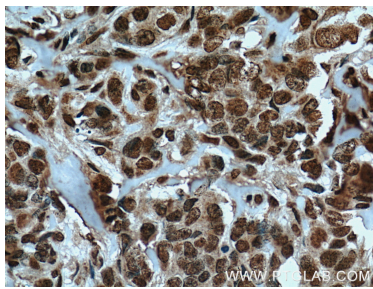
For technical support and original validation data for this product please contact:  
T: 1 (888) 4PTGLAB (1-888-478-4522) (toll free in USA), or 1(312) 455-8498 (outside USA)  
E: [proteintech@ptglab.com](mailto:proteintech@ptglab.com)  
W: [ptglab.com](http://ptglab.com)

This product is exclusively available under Proteintech Group brand and is not available to purchase from any other manufacturer.

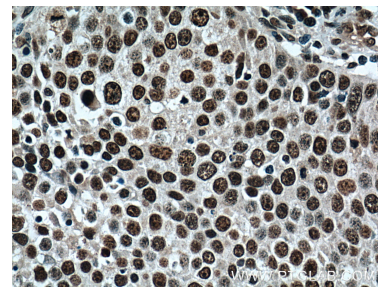
## Selected Validation Data



Various lysates were subjected to SDS PAGE followed by western blot with 66324-1-Ig (TRIM24 antibody) at dilution of 1:3000 incubated at room temperature for 1.5 hours.



Immunohistochemical analysis of paraffin-embedded human breast cancer tissue slide using 66324-1-Ig (TRIM24 Antibody) at dilution of 1:200 (under 40x lens). Heat mediated antigen retrieval with Tris-EDTA buffer (pH 9.0).



Immunohistochemical analysis of paraffin-embedded human lung cancer tissue slide using 66324-1-Ig (TRIM24 Antibody) at dilution of 1:200 (under 40x lens). Heat mediated antigen retrieval with Tris-EDTA buffer (pH 9.0).



Immunofluorescent analysis of (4% PFA) fixed HepG2 cells using TRIM24 antibody (66324-1-Ig, Clone: 1D6D9 ) at dilution of 1:800 and CoraLite®488-Conjugated AffiniPure Goat Anti-Mouse IgG(H+L) (SA00013-1).