

For Research Use Only

VPS37A Monoclonal ANTIBODY

Catalog Number: 66327-1-Ig



Basic Information

Catalog Number:
66327-1-Ig

Size:
150 µg/150 µl

Source:
Mouse

Isotype:
IgG1

Purification Method:
Protein G purification

Immunogen Catalog Number:
AG19108

GenBank Accession Number:
BC022363

GeneID (NCBI):
137492

Full Name:
vacuolar protein sorting 37 homolog A (S. cerevisiae)

Calculated MW:
44 kDa

Observed MW:
44 kDa

Recommended Dilutions:

WB 1:1000-1:4000

IHC 1:50-1:500

IF 1:50-1:500

Applications

Tested Applications:

IF, IHC, WB, ELISA

Species Specificity:

human

Note: suggested antigen retrieval with TE buffer pH 9.0; (*) Alternatively, antigen retrieval may be performed with citrate buffer pH 6.0

Positive Controls:

WB : SW 1990 cells; MCF-7 cells

IHC : human kidney tissue; human ovary tumor tissue

IF : MCF-7 cells;

Background Information

VPS37A, also named as HCRP1, belongs to the VPS37 family. It is a regulator of vesicular trafficking process. VPS37A is a member of the endosomal sorting complex required for transport (ESCRT) system, in upper motor neuron disease. ESCRT has been shown to play a central role in intracellular trafficking, in the maturation of multivesicular bodies and the sorting of ubiquitinated membrane proteins into internal luminal vesicles.

Notable Publications

Author	Pubmed ID	Journal	Application
--------	-----------	---------	-------------

Storage

Storage:

Store at -20°C. Stable for one year after shipment.

Storage Buffer:

PBS with 0.02% sodium azide and 50% glycerol pH 7.3.

Aliquoting is unnecessary for -20°C storage

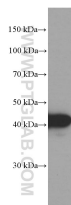
For technical support and original validation data for this product please contact:

T: 1 (888) 4PTGLAB (1-888-478-4522) (toll free in USA), or 1(312) 455-8498 (outside USA)

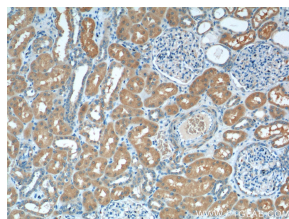
E: proteintech@ptglab.com
W: ptglab.com

This product is exclusively available under Proteintech Group brand and is not available to purchase from any other manufacturer.

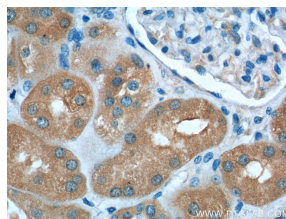
Selected Validation Data



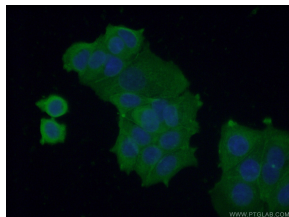
SW 1990 cells were subjected to SDS PAGE followed by western blot with 66327-1-Ig (VPS37A Antibody) at dilution of 1:2000 incubated at room temperature for 1.5 hours



Immunohistochemistry of paraffin-embedded human kidney tissue slide using 66327-1-Ig (VPS37A Antibody) at dilution of 1:200 (under 10x lens).



Immunohistochemistry of paraffin-embedded human kidney tissue slide using 66327-1-Ig (VPS37A Antibody) at dilution of 1:200 (under 40x lens).



Immunofluorescent analysis of (-20°C Ethanol) fixed MCF-7 cells using 66327-1-Ig (VPS37A antibody) at dilution of 1:100 and Alexa Fluor 488-conjugated AffiniPure Goat Anti-Mouse IgG(H+L)