

For Research Use Only

CAPRIN1 Monoclonal antibody

Catalog Number: 66352-1-Ig **3 Publications**



Basic Information

Catalog Number: 66352-1-Ig	GenBank Accession Number: BC001731	Purification Method: Protein G purification
Size: 150ul , Concentration: 1000 ug/ml by Nanodrop;	GeneID (NCBI): 4076	CloneNo.: 6B10F11
Source: Mouse	UNIPROT ID: Q14444	Recommended Dilutions: WB: 1:5000-1:50000 IHC: 1:500-1:2000 IF/ICC: 1:400-1:1600 FC (Intra): 0.20 ug per 10 ⁶ cells in a 100 µl suspension
Isotype: IgG1	Full Name: cell cycle associated protein 1	
Immunogen Catalog Number: AG7413	Calculated MW: 78 kDa	
	Observed MW: 116 kDa	

Applications

Tested Applications: WB, IHC, IF/ICC, FC (Intra), ELISA	Positive Controls: WB : LNCaP cells, HeLa cells, HEK-293 cells, HepG2 cells, Jurkat cells, K-562 cells, HSC-T6 cells, NIH/3T3 cells IHC : human breast cancer tissue, human prostate cancer tissue, mouse brain tissue IF/ICC : sodium arsenite treated HeLa cells, HeLa cells FC (Intra) : NIH/3T3 cells,
Cited Applications: WB, IF, IP	
Species Specificity: human, mouse, rat	
Cited Species: human, mouse	
Note-IHC: suggested antigen retrieval with TE buffer pH 9.0; (*) Alternatively, antigen retrieval may be performed with citrate buffer pH 6.0	

Background Information

CAPRIN1(Caprin-1) is a cytoplasmic phosphoprotein which may regulate the transport and translation of mRNAs of proteins involved in synaptic plasticity in neurons and cell proliferation and migration in multiple cell types. Its levels, except in the brain, are tightly correlated with cellular proliferation. Suppression of expression of human Caprin-1 resulted in slowing of the proliferation rate, which suggests its essential for normal cellular proliferation.

Notable Publications

Author	Pubmed ID	Journal	Application
Jia Liu	39882824	ACS Nano	IF
Wyatt Wofford	39046874	Cell Rep	WB,IP
Brian D Freibaum	38284934	J Cell Biol	WB

Storage

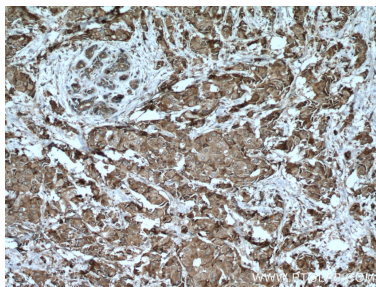
Storage:
Store at -20°C. Stable for one year after shipment.
Storage Buffer:
PBS with 0.02% sodium azide and 50% glycerol, pH7.3
Aliquoting is unnecessary for -20°C storage

*** 20ul sizes contain 0.1% BSA

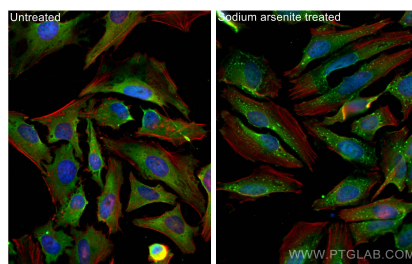
For technical support and original validation data for this product please contact:
T: 1 (888) 4PTGLAB (1-888-478-4522) (toll free in USA), or 1(312) 455-8498 (outside USA)
E: proteintech@ptglab.com
W: ptglab.com

This product is exclusively available under Proteintech Group brand and is not available to purchase from any other manufacturer.

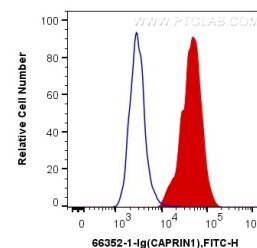
Selected Validation Data



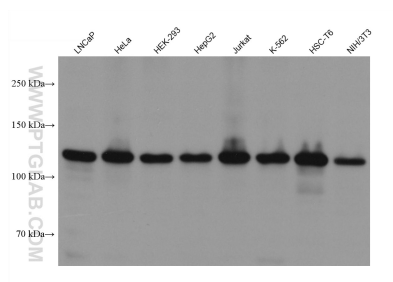
Immunohistochemical analysis of paraffin-embedded human breast cancer tissue slide using 66352-1-Ig (CAPRIN1 antibody) at dilution of 1:1000 (under 10x lens. Heat mediated antigen retrieval with Tris-EDTA buffer (pH 9.0).



Immunofluorescent analysis of (4% PFA) fixed sodium arsenite treated HeLa cells using CAPRIN1 antibody (66352-1-Ig, Clone: 6B10F11) at dilution of 1:800 and CoraLite@488-Conjugated AffiniPure Goat Anti-Mouse IgG(H+L), CL594-Phalloidin (red).



1X10⁶ NIH/3T3 cells were intracellularly stained with 0.2 ug Anti-Human CAPRIN1 (66352-1-Ig, Clone: 6B10F11) (red), or 0.2 ug Control Antibody. Cells were fixed with 4% PFA and permeabilized with Flow Cytometry Perm Buffer (PF00011-C).



Various lysates were subjected to SDS PAGE followed by western blot with 66352-1-Ig (CAPRIN1 antibody) at dilution of 1:20000 incubated at room temperature for 1.5 hours.