

For Research Use Only

CBLB Monoclonal antibody

Catalog Number: 66353-1-Ig **2 Publications**



Basic Information

Catalog Number: 66353-1-Ig	GenBank Accession Number: BC032851	Purification Method: Protein A purification
Size: 150ul , Concentration: 1500 ug/ml by 868 Nanodrop and 1000 ug/ml by Bradford method using BSA as the standard;	GeneID (NCBI): 868	CloneNo.: 2D3A2
Source: Mouse	UNIPROT ID: Q13191	Recommended Dilutions: WB: 1:500-1:2000 IHC: 1:100-1:400 IF/ICC: 1:50-1:500
Isotype: IgG3	Full Name: Cas-Br-M (murine) ecotropic retroviral transforming sequence b	
Immunogen Catalog Number: AG18757	Calculated MW: 982 aa, 109 kDa	
	Observed MW: 110 kDa	

Applications

Tested Applications: WB, IHC, IF/ICC, ELISA	Positive Controls:
Cited Applications: WB, IHC, IF	WB : RAW 264.7 cells, rat heart tissue
Species Specificity: human, mouse, pig, rat	IHC : human heart tissue, human testis tissue
Cited Species: human, mouse	IF/ICC : RAW 264.7 cells,
Note-IHC: suggested antigen retrieval with TE buffer pH 9.0; (*) Alternatively, antigen retrieval may be performed with citrate buffer pH 6.0	

Background Information

CBLB(E3 ubiquitin-protein ligase CBL-B) is also known as RNF56 and plays a necessary role to prevent the inappropriate activation of NF-B in response to lipopolysaccharide and to polymicrobial sepsis. CBLB can be phosphorylated on tyrosine and serine residues upon TCR or BCR activation, and upon various types of cell stimulation.. It also has a crucial role in the prevention of chronic inflammation and autoimmunity. This protein has 3 isoforms produced by alternative splicing.

Notable Publications

Author	Pubmed ID	Journal	Application
Hao Luo	39736629	Mol Cancer	
Haijun Bao	38105184	J Exp Clin Cancer Res	WB,IHC,IF

Storage

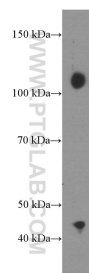
Storage:
Store at -20°C. Stable for one year after shipment.
Storage Buffer:
PBS with 0.02% sodium azide and 50% glycerol, pH7.3
Aliquoting is unnecessary for -20°C storage

*** 20ul sizes contain 0.1% BSA

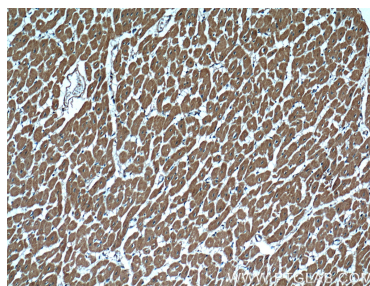
For technical support and original validation data for this product please contact:
T: 1 (888) 4PTGLAB (1-888-478-4522) (toll free in USA), or 1(312) 455-8498 (outside USA)
E: proteintech@ptglab.com
W: ptglab.com

This product is exclusively available under Proteintech Group brand and is not available to purchase from any other manufacturer.

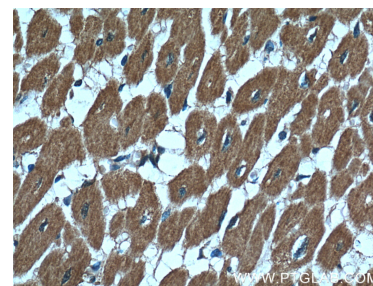
Selected Validation Data



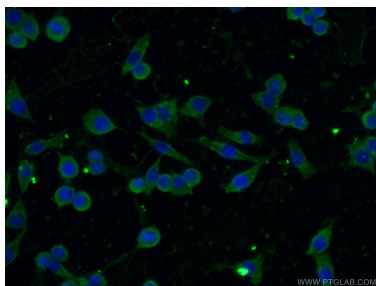
RAW 264.7 cells were subjected to SDS PAGE followed by western blot with 66353-1-Ig (CBLB Antibody) at dilution of 1:1000 incubated at room temperature for 1.5 hours.



Immunohistochemical analysis of paraffin-embedded human heart tissue slide using 66353-1-Ig (CBLB Antibody) at dilution of 1:200 (under 10x lens).



Immunohistochemical analysis of paraffin-embedded human heart tissue slide using 66353-1-Ig (CBLB Antibody) at dilution of 1:200 (under 40x lens).



Immunofluorescent analysis of (-20°C Ethanol) fixed RAW 264.7 cells using 66353-1-Ig(CBLB antibody) at dilution of 1:100 and Alexa Fluor 488-conjugated Goat Anti-Mouse IgG(H+L).