

For Research Use Only

MMP2 Monoclonal antibody, PBS Only (Detector)

Catalog Number: 66366-1-PBS

Featured Product

1 Publications



Basic Information

Catalog Number: 66366-1-PBS	GenBank Accession Number: BC002576	Purification Method: Protein G purification
Size: 100ug , Concentration: 1mg/ml by Nanodrop;	GeneID (NCBI): 4313	CloneNo.: 2B10D1
Source: Mouse	UNIPROT ID: P08253	
Isotype: IgG1	Full Name: matrix metalloproteinase 2 (gelatinase A, 72kDa gelatinase, 72kDa type IV collagenase)	
Immunogen Catalog Number: AG25039	Calculated MW: 72 kDa	
	Observed MW: 55-74 kDa	

Applications

Tested Applications:
WB, IHC, FC (Intra), Cytometric bead array, Indirect ELISA

Cited Applications:
IHC

Species Specificity:
human, mouse, rat, pig

Cited Species:
human

Product Information

66366-1-PBS targets MMP2 as part of a matched antibody pair:

MP51054-2: 66366-4-PBS capture and 66366-1-PBS detection (validated in Cytometric bead array)

MP51054-3: 66366-5-PBS capture and 66366-1-PBS detection (validated in Cytometric bead array)

Unconjugated mouse monoclonal antibody pair in PBS only (BSA and azide free) storage buffer at a concentration of 1 mg/mL, ready for conjugation.

This conjugation ready format makes antibodies ideal for use in many applications including: ELISAs, multiplex assays requiring matched pairs, mass cytometry, and multiplex imaging applications. Antibody use should be optimized by the end user for each application and assay.

Background Information

MMP2, also named as CLG4A, Gelatinase Am, TBE-1 and PEX, belongs to the peptidase M10A family. It is ubiquitous metalloproteinase that is involved in diverse functions such as remodeling of the vasculature, angiogenesis, tissue repair, tumor invasion, inflammation, and atherosclerotic plaque rupture. MMP2 contributes to myocardial oxidative stress by regulating the activity of GSK3beta. It cleaves GSK3beta in vitro. MMP2 can be cleaved into PEX chain (~60kd). Western blot analysis showed that the 72 kDa and 62 kDa proteinase activities were pro-MMP2 and the active enzyme, respectively (PMID:11112697).

Notable Publications

Author	Pubmed ID	Journal	Application
Xiaoxiao Guo	39337713	Int J Mol Sci	IHC

Storage

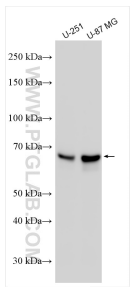
Storage:
Store at -80°C.

Storage Buffer:
PBS only, pH7.3

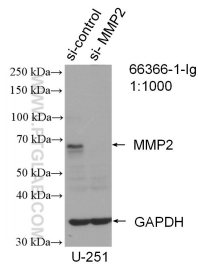
For technical support and original validation data for this product please contact:
T: 1 (888) 4PTGLAB (1-888-478-4522) (toll free in USA), or 1(312) 455-8498 (outside USA)
E: proteintech@ptglab.com
W: ptglab.com

This product is exclusively available under Proteintech Group brand and is not available to purchase from any other manufacturer.

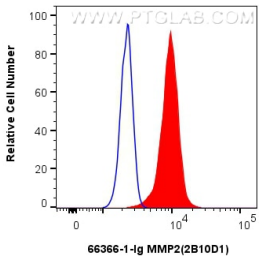
Selected Validation Data



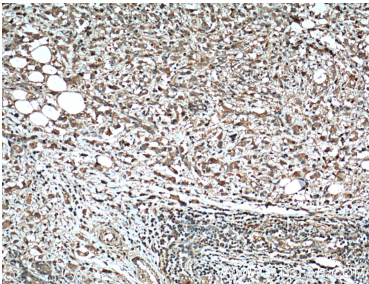
Various lysates were subjected to SDS PAGE followed by western blot with 66366-1-Ig (MMP2 antibody) at dilution of 1:3000 incubated at room temperature for 1.5 hours. This data was developed using the same antibody clone with 66366-1-PBS in a different storage buffer formulation.



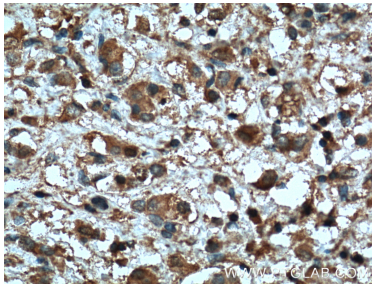
WB result of MMP2 antibody (66366-1-Ig; 1:1000; incubated at room temperature for 1.5 hours) with sh-Control and sh-MMP2 transfected U-251 cells. This data was developed using the same antibody clone with 66366-1-PBS in a different storage buffer formulation.



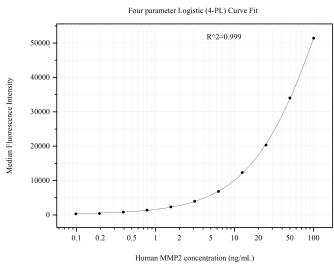
1x10⁶ HeLa cells were intracellularly stained with 0.4 ug MMP2 Monoclonal antibody (66366-1-Ig, Clone:2B10D1) and CoraLite®488-Conjugated Goat Anti-Mouse IgG(H+L) (SA00013-1)(red), or 0.4 ug Mouse IgG1 isotype control Mouse McAb (66360-1-Ig, Clone: 1F8D3) (blue). Cells were fixed with 4% PFA and permeabilized with Flow Cytometry Perm Buffer (PF00011-C). This data was developed using the same antibody clone with 66366-1-PBS in a



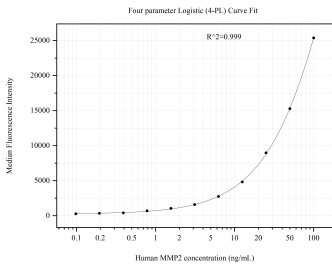
Immunohistochemical analysis of paraffin-embedded human breast cancer tissue slide using 66366-1-Ig (MMP2 antibody) at dilution of 1:300 (under 10x lens). Heat mediated antigen retrieval with Tris-EDTA buffer (pH 9.0). This data was developed using the same antibody clone with 66366-1-PBS in a different storage buffer formulation.



Immunohistochemical analysis of paraffin-embedded human breast cancer tissue slide using 66366-1-Ig (MMP2 antibody) at dilution of 1:300 (under 40x lens). Heat mediated antigen retrieval with Tris-EDTA buffer (pH 9.0). This data was developed using the same antibody clone with 66366-1-PBS in a different storage buffer formulation.



Cytometric bead array standard curve of MP51054-2, MMP2 Monoclonal Matched Antibody Pair, PBS Only. Capture antibody: 66366-4-PBS. Detection antibody: 66366-1-PBS. Standard:Ag25039. Range: 0.098-100 ng/mL



Cytometric bead array standard curve of MP51054-3, MMP2 Monoclonal Matched Antibody Pair, PBS Only. Capture antibody: 66366-5-PBS. Detection antibody: 66366-1-PBS. Standard:Ag25039. Range: 0.098-100 ng/mL