

For Research Use Only

Cyclin A2 Monoclonal antibody



Catalog Number: 66391-1-Ig

Featured Product

9 Publications

Basic Information

Catalog Number:

66391-1-Ig

GenBank Accession Number:

BC104783

Purification Method:

Protein A purification

Size:

150ul, Concentration: 1000 µg/ml by 890

GeneID (NCBI):

890

CloneNo.:

1C6C11

Bradford method using BSA as the standard;

Full Name:

cyclin A2

Recommended Dilutions:

WB 1:2000-1:10000

Source:

Mouse

Calculated MW:

432 aa, 49 kDa

IHC 1:1000-1:4000

IF 1:50-1:500

Isotype:

IgG2a

Observed MW:

52 kDa

Immunogen Catalog Number:

AG12765

Applications

Tested Applications:

IF, IHC, WB, ELISA

Positive Controls:

WB: HepG2 cells, HeLa cells, Raji cells, Jurkat cells, HEK-293 cells, HeLa cells

Cited Applications:

WB

IHC: human tonsillitis tissue,

Species Specificity:

human

IF: HeLa cells, MCF-7 cells

Cited Species:

human

Note-IHC: suggested antigen retrieval with TE buffer pH 9.0; (*) Alternatively, antigen retrieval may be performed with citrate buffer pH 6.0

Background Information

CCNA2 belongs to the highly conserved cyclin family, whose members are characterized by a dramatic periodicity in protein abundance through the cell cycle. Cyclins function as regulators of CDK kinases. Different cyclins exhibit distinct expression and degradation patterns which contribute to the temporal coordination of each mitotic event. In contrast to cyclin A1, which is present only in germ cells, this cyclin is expressed in all tissues tested. CCNA2 binds and activates CDC2 or CDK2 kinases, and thus promotes both cell cycle G1/S and G2/M transitions.

Notable Publications

Author	Pubmed ID	Journal	Application
Y Zhong	28869606	Oncogene	WB
Dianbao Zhang	33076708	Nutr Cancer	WB
Junmei Jin	33242535	Fitoterapia	WB

Storage

Storage:

Store at -20°C. Stable for one year after shipment.

Storage Buffer:

PBS with 0.02% sodium azide and 50% glycerol pH 7.3.

Aliquoting is unnecessary for -20°C storage

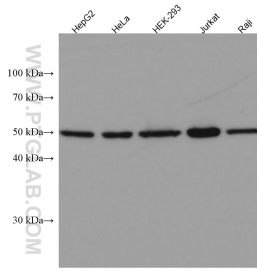
For technical support and original validation data for this product please contact:

T: 1 (888) 4PTGLAB (1-888-478-4522) (toll free in USA), or 1(312) 455-8498 (outside USA)

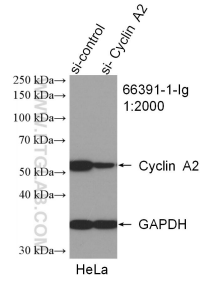
E: proteintech@ptglab.com
W: ptglab.com

This product is exclusively available under Proteintech Group brand and is not available to purchase from any other manufacturer.

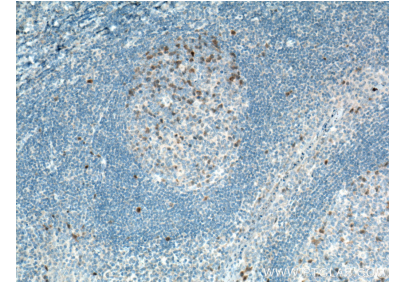
Selected Validation Data



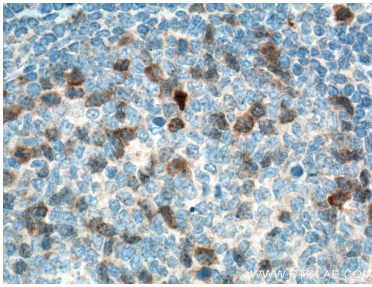
Various lysates were subjected to SDS PAGE followed by western blot with 66391-1-Ig (Cyclin A2 antibody) at dilution of 1:10000 incubated at room temperature for 1.5 hours.



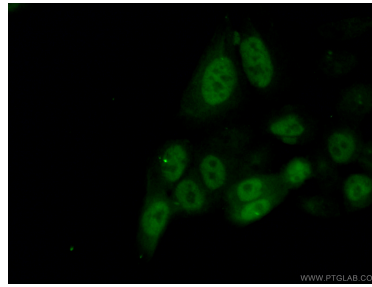
WB result of Cyclin A2 antibody (66391-1-Ig; 1:2000; incubated at room temperature for 1.5 hours) with sh-Control and sh-Cyclin A2 transfected HeLa cells.



Immunohistochemical analysis of paraffin-embedded human tonsillitis tissue slide using 66391-1-Ig (Cyclin A2 antibody) at dilution of 1:2000 (under 10x lens. Heat mediated antigen retrieval with Tris-EDTA buffer (pH 9.0).



Immunohistochemical analysis of paraffin-embedded human tonsillitis tissue slide using 66391-1-Ig (Cyclin A2 antibody) at dilution of 1:2000 (under 40x lens. Heat mediated antigen retrieval with Tris-EDTA buffer (pH 9.0).



Immunofluorescent analysis of (4% PFA) fixed HeLa cells using 66391-1-Ig (Cyclin A2 antibody) at dilution of 1:100 and Alexa Fluor 488-conjugated AffiniPure Goat Anti-Mouse IgG(H+L).