

For Research Use Only

CD36 Monoclonal antibody

Catalog Number: 66395-1-Ig **21 Publications**



Basic Information

Catalog Number: 66395-1-Ig	GenBank Accession Number: BC008406	Purification Method: Protein G purification
Size: 150ul, Concentration: 1800 ug/ml by 948 Nanodrop and 1000 ug/ml by Bradford method using BSA as the standard;	GeneID (NCBI): UNIPROT ID: P16671	CloneNo.: 1A8C5
Source: Mouse	Full Name: CD36 molecule (thrombospondin receptor)	Recommended Dilutions: WB: 1:1000-1:6000 IHC: 1:500-1:2000 IF-P: 1:200-1:800 IF/ICC: 1:400-1:1600
Isotype: IgG1	Calculated MW: 472 aa, 53 kDa	
Immunogen Catalog Number: AG13541	Observed MW: 88 kDa	

Applications

Tested Applications: WB, IHC, IF/ICC, IF-P, ELISA	Positive Controls:
Cited Applications: WB, IHC, IF	WB: human heart tissue, human milk, human spleen tissue, human placenta tissue
Species Specificity: human	IHC: human spleen tissue, human heart tissue
Cited Species: human	IF-P: human liver cancer tissue, THP-1 cells
Note-IHC: suggested antigen retrieval with TE buffer pH 9.0; (*) Alternatively, antigen retrieval may be performed with citrate buffer pH 6.0	IF/ICC: THP-1 cells,

Background Information

CD36, also named as GP3B and GP4, is an 88-kDa membrane glycoprotein present on platelets, monocytes, erythroid precursors, endothelial cells, and several tumor cell lines. CD36 binds to collagen, thrombospondin, anionic phospholipids, long chain fatty acids and may function in the transport and/or as a regulator of fatty acid transport and oxidized LDL. CD36 may function as a cell adhesion molecule. It mediates cytoadherence of Plasmodium falciparum parasitized erythrocytes. Mutation of CD36 will cause platelet glycoprotein IV deficiency which known as CD36 deficiency. Genetic variations in CD36 are associated with susceptibility to coronary heart disease type 7 (CHDS7).

Notable Publications

Author	Pubmed ID	Journal	Application
Yan Cao	34599913	Eur J Pharmacol	WB
Simon Riis	31430404	Scand J Med Sci Sports	IHC
Chenxi Liang	35656026	Oxid Med Cell Longev	WB

Storage

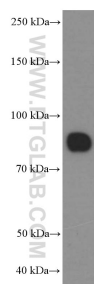
Storage:
Store at -20°C. Stable for one year after shipment.
Storage Buffer:
PBS with 0.02% sodium azide and 50% glycerol, pH7.3
Aliquoting is unnecessary for -20°C storage

*** 20ul sizes contain 0.1% BSA

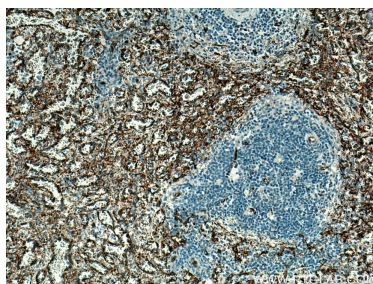
For technical support and original validation data for this product please contact:
T: 1 (888) 4PTGLAB (1-888-478-4522) (toll free in USA), or 1(312) 455-8498 (outside USA)
E: proteintech@ptglab.com
W: ptglab.com

This product is exclusively available under Proteintech Group brand and is not available to purchase from any other manufacturer.

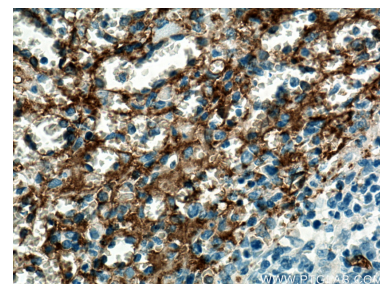
Selected Validation Data



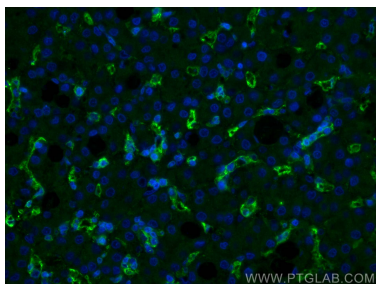
human heart tissue were subjected to SDS PAGE followed by western blot with 66395-1-Ig (CD36 Antibody) at dilution of 1:3000 incubated at room temperature for 1.5 hours.



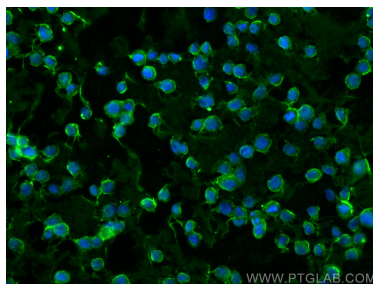
Immunohistochemical analysis of paraffin-embedded human spleen tissue slide using 66395-1-Ig (CD36 antibody) at dilution of 1:1000 (under 10x lens). Heat mediated antigen retrieval with Tris-EDTA buffer (pH 9.0).



Immunohistochemical analysis of paraffin-embedded human spleen tissue slide using 66395-1-Ig (CD36 antibody) at dilution of 1:1000 (under 40x lens). Heat mediated antigen retrieval with Tris-EDTA buffer (pH 9.0).



Immunofluorescent analysis of (4% PFA) fixed human liver cancer tissue using CD36 antibody (66395-1-Ig, Clone: 1A8C5) at dilution of 1:400 and CoraLite®488-Conjugated AffiniPure Goat Anti-Mouse IgG(H+L).



Immunofluorescent analysis of (4% PFA) fixed THP-1 cells using CD36 antibody (66395-1-Ig, Clone: 1A8C5) at dilution of 1:800 and CoraLite®488-Conjugated Goat Anti-Mouse IgG(H+L) (SA00013-1).